

FLOOR PLANS



The ROVE logos, trade-marks and trade names (the «ROVE Marks») published in this publication are owned by or licensed to Rove Hotels LLC or its Group Companies (collectively referred to as «ROVE»). The use of the ROVE Marks by IRTH Signature Development LLC (the «Company») has been authorised by ROVE under license, solely in relation to the intention of ROVE to supervise the operation of the «ROVE Home Marasi Drive, Dubai» development located in Business Bay, Dubai (the «Building») and in respect of the marketing and sale of the residences within the Building (the «Residences»). The Building and the Residences are not owned, developed or sold by ROVE. The Company, which is not an affiliate of ROVE, is responsible for the marketing and sales of the Residences. Accordingly, ROVE will not be responsible for: (a) any advertising claims or representations in this publication or otherwise made by the Company; (b) any content in this publication; (c) any marketing and/or data collection practices carried out by the Company; (d) any dealings or communications that you have with the Company; and (e) any infringement of third party rights or local laws in connection with this publication. ROVE strongly recommends that you confirm any information appearing in this publication and consult your professional advisors before proceeding with any related transaction. To the maximum extent permitted by law, ROVE will not be liable for any form of loss or damage arising out of or in connection with this publication, the Building, the Residences, or any dealings or communications that you have with the Company.

All images used are for illustrative purposes only and do not represent the actual size, features, specifications, fittings, and furnishings. The developer reserves the right to make revisions / alterations, at its absolute discretion, without any liability whatsoever.

TIER 1 TYPICAL FLOOR 5TH TO 21ST

UNITS PER FLOOR

Studio Flex	6	Units
Studio ²	10	Units
1 Bedroom ²	14	Units
2 Bedroom ²	3	Units



LEGEND

- STUDIO FLEX
- STUDIO²
- 1 BEDROOM²
- 2 BEDROOM² TYPE A
- 2 BEDROOM² TYPE B

The ROVE logos, trade-marks and trade names (the "ROVE Marks") published in this publication are owned by or licensed to Rove Hotels LLC or its Group Companies (collectively referred to as "ROVE"). The use of the ROVE Marks by IRT Signature Development LLC (the "Company") has been authorised by ROVE under license, solely in relation to the intention of ROVE to supervise the operation of the "ROVE Home Marasi Drive, Dubai" development located in Business Bay, Dubai (the "Building") and in respect of the marketing and sale of the residences within the Building (the "Residences"). The Building and the Residences are not owned, developed or sold by ROVE. The Company, which is not an affiliate of ROVE, is responsible for the marketing and sales of the Residences. Accordingly, ROVE will not be responsible for: (a) any advertising claims or representations in this publication or otherwise made by the Company; (b) any content in this publication; (c) any marketing and/or data collection practices carried out by the Company; (d) any dealings or communications that you have with the Company; and (e) any infringement of third party rights or local laws in connection with this publication. ROVE strongly recommends that you confirm any information appearing in this publication and consult your professional advisors before proceeding with any related transaction. To the maximum extent permitted by law, ROVE will not be liable for any form of loss or damage arising out of or in connection with this publication, the Building, the Residences, or any dealings or communications that you have with the Company.

All images used are for illustrative purposes only and do not represent the actual size, features, specifications, fittings, and furnishings. The developer reserves the right to make revisions / alterations, at its absolute discretion, without any liability whatsoever.

TIER 2 TYPICAL FLOOR 24TH TO 31ST

UNITS PER FLOOR

Studio ²	12	Units
1 Bedroom ²	16	Units
2 Bedroom ²	3	Units



LEGEND

- STUDIO²
- 1 BEDROOM²
- 2 BEDROOM² TYPE A
- 2 BEDROOM² TYPE B



The ROVE logos, trade-marks and trade names (the "ROVE Marks") published in this publication are owned by or licensed to Rove Hotels LLC or its Group Companies (collectively referred to as "ROVE"). The use of the ROVE Marks by IRT Signature Development LLC (the "Company") has been authorised by ROVE under license, solely in relation to the intention of ROVE to supervise the operation of the "ROVE Home Marasi Drive, Dubai" development located in Business Bay, Dubai (the "Building") and in respect of the marketing and sale of the residences within the Building (the "Residences"). The Building and the Residences are not owned, developed or sold by ROVE. The Company, which is not an affiliate of ROVE, is responsible for the marketing and sales of the Residences. Accordingly, ROVE will not be responsible for: (a) any advertising claims or representations in this publication or otherwise made by the Company; (b) any content in this publication; (c) any marketing and/or data collection practices carried out by the Company; (d) any dealings or communications that you have with the Company; and (e) any infringement of third party rights or local laws in connection with this publication. ROVE strongly recommends that you confirm any information appearing in this publication and consult your professional advisors before proceeding with any related transaction. To the maximum extent permitted by law, ROVE will not be liable for any form of loss or damage arising out of or in connection with this publication, the Building, the Residences, or any dealings or communications that you have with the Company.

All images used are for illustrative purposes only and do not represent the actual size, features, specifications, fittings, and furnishings. The developer reserves the right to make revisions / alterations, at its absolute discretion, without any liability whatsoever.

UNIT PLANS



The ROVE logos, trade-marks and trade names (the «ROVE Marks») published in this publication are owned by or licensed to Rove Hotels LLC or its Group Companies (collectively referred to as «ROVE»). The use of the ROVE Marks by IRTH Signature Development LLC (the «Company») has been authorised by ROVE under license, solely in relation to the intention of ROVE to supervise the operation of the «ROVE Home Marasi Drive, Dubai» development located in Business Bay, Dubai (the «Building») and in respect of the marketing and sale of the residences within the Building (the «Residences»). The Building and the Residences are not owned, developed or sold by ROVE. The Company, which is not an affiliate of ROVE, is responsible for the marketing and sales of the Residences. Accordingly, ROVE will not be responsible for: (a) any advertising claims or representations in this publication or otherwise made by the Company; (b) any content in this publication; (c) any marketing and/or data collection practices carried out by the Company; (d) any dealings or communications that you have with the Company; and (e) any infringement of third party rights or local laws in connection with this publication. ROVE strongly recommends that you confirm any information appearing in this publication and consult your professional advisors before proceeding with any related transaction. To the maximum extent permitted by law, ROVE will not be liable for any form of loss or damage arising out of or in connection with this publication, the Building, the Residences, or any dealings or communications that you have with the Company.

All images used are for illustrative purposes only and do not represent the actual size, features, specifications, fittings, and furnishings. The developer reserves the right to make revisions / alterations, at its absolute discretion, without any liability whatsoever.

UNITS DESCRIPTION

STUDIO FLEX

Live in the future, today.

In Studio Flex explore the ORI Cloud Bed, optimizing your living space with functionality and smart living.

Every inch is designed to provide more space for comfort and convenience. This feature increase your unit size by 33%.

STUDIO²

In Studio² experience the Flexibed, a smart innovation for modern living.

When folded, it unveils a spacious living room creating a cohesive space that blends both style and functionality.

1 BEDROOM²

In 1 Bedroom² double up your space with next generation features that enhance smart living.

With pocket walls that disappear and a Flexibed that seamlessly converts, you can transform your living room into an extra bedroom, anytime you want!

2 BEDROOM²

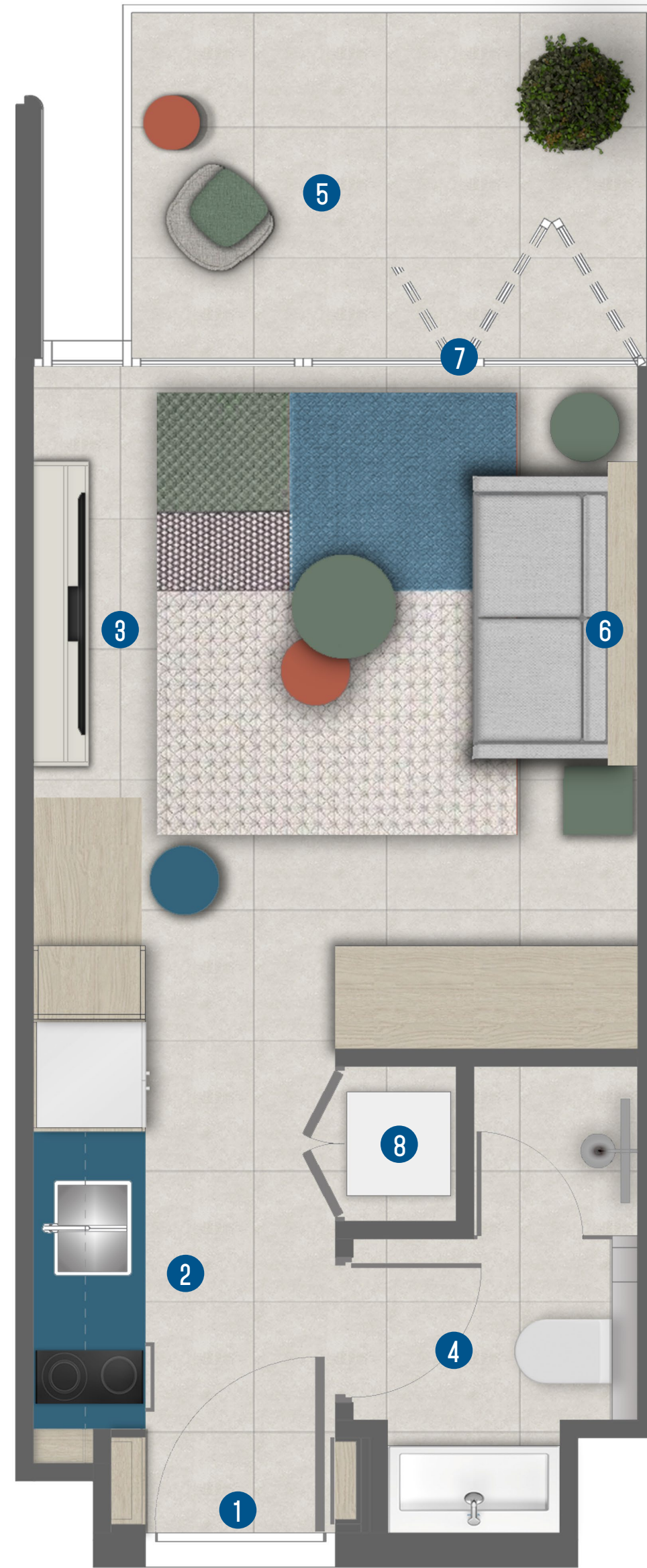
In 2 Bedroom² discover extra functionality with added space and maximum value.

Whether you want to add a multipurpose spare room or double up your living space as a bedroom - every inch of space feels larger and works exactly how you want.

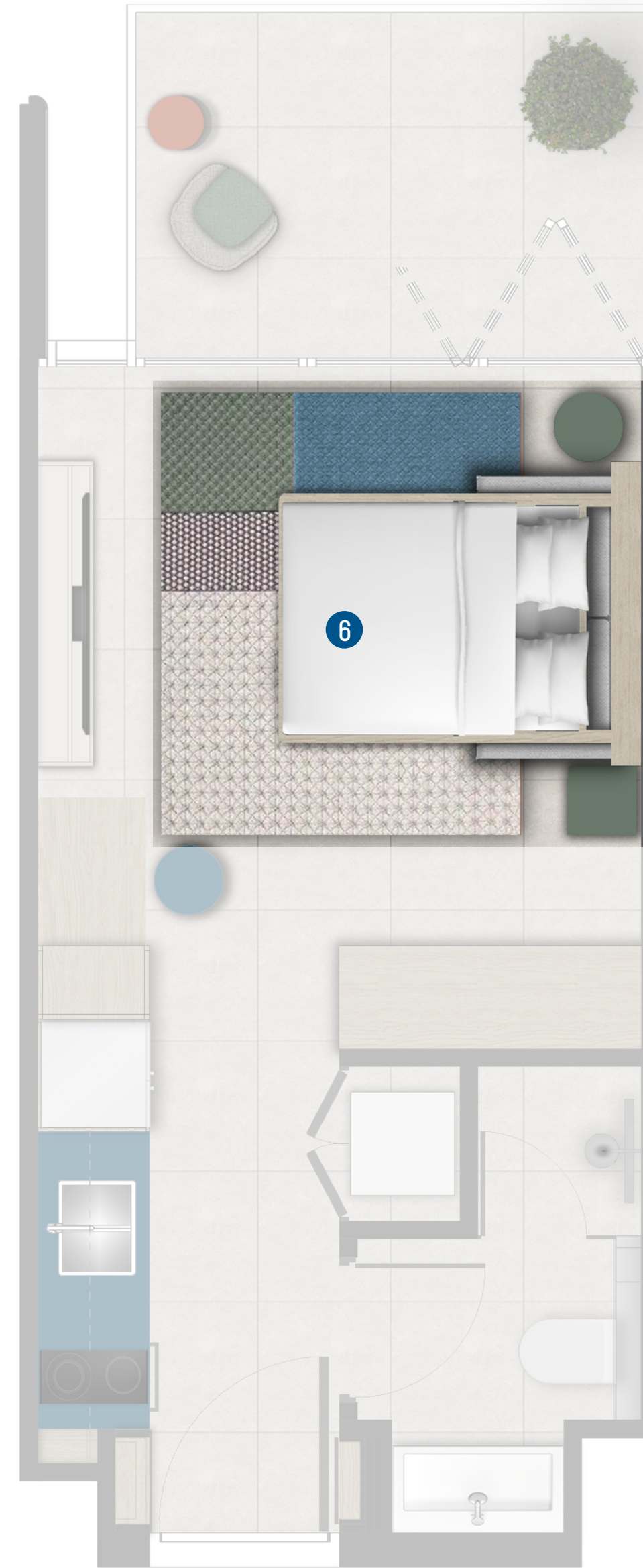
STUDIO FLEX

Legend

1. Entrance
2. Kitchen
1.80m X 3.00m
3. Living Room & Bedroom
3.50m X 3.80m
4. Bathroom
1.70m X 2.75m
5. Balcony
3.00m X 2.05m
6. ORI Cloud Bed
7. Bi-fold Glass Doors
8. Laundry



ORI Cloud Bed Up



ORI Cloud Bed Down

LEVELS 5-21



STUDIO FLEX	SQFT
INTERNAL AREA	273-297
BALCONY AREA	68-72
TOTAL AREA	341-366

The ROVE logos, trade-marks and trade names (the «ROVE Marks») published in this publication are owned by or licensed to Rove Hotels LLC or its Group Companies (collectively referred to as «ROVE»). The use of the ROVE Marks by IRTH Signature Development LLC (the «Company») has been authorised by ROVE under license, solely in relation to the intention of ROVE to supervise the operation of the «ROVE Home Marasi Drive, Dubai» development located in Business Bay, Dubai (the «Building») and in respect of the marketing and sale of the residences within the Building (the «Residences»). The Building and the Residences are not owned, developed or sold by ROVE. The Company, which is not an affiliate of ROVE, is responsible for the marketing and sales of the Residences. Accordingly, ROVE will not be responsible for: (a) any advertising claims or representations in this publication or otherwise made by the Company; (b) any content in this publication; (c) any marketing and/or data collection practices carried out by the Company; (d) any dealings or communications that you have with the Company; and (e) any infringement of third party rights or local laws in connection with this publication. ROVE strongly recommends that you confirm any information appearing in this publication and consult your professional advisors before proceeding with any related transaction. To the maximum extent permitted by law, ROVE will not be liable for any form of loss or damage arising out of or in connection with this publication, the Building, the Residences, or any dealings or communications that you have with the Company.

All images used are for illustrative purposes only and do not represent the actual size, features, specifications, fittings, and furnishings. The developer reserves the right to make revisions / alterations, at its absolute discretion, without any liability whatsoever.

EXPANDABLE LIVING SOLUTIONS



Live in the future, today.

Designed to embody Rove's unique look and feel, the interiors will feature intelligent and modular living solutions by ORI, never seen before in UAE and the region.

ORI introduces a revolutionary solution to apartment living, where space is not just a constraint but an opportunity.

- Simple
- Safe
- Effortless



This visual reference serves as a representation of the original ORI living product and does not showcase the finalized designs for Rove Home Marasi Drive.



This visual reference serves as a representation of the original ORI living product and does not showcase the finalized designs for Rove Home Marasi Drive.



This visual reference serves as a representation of the original ORI living product and does not showcase the finalized designs for Rove Home Marasi Drive.

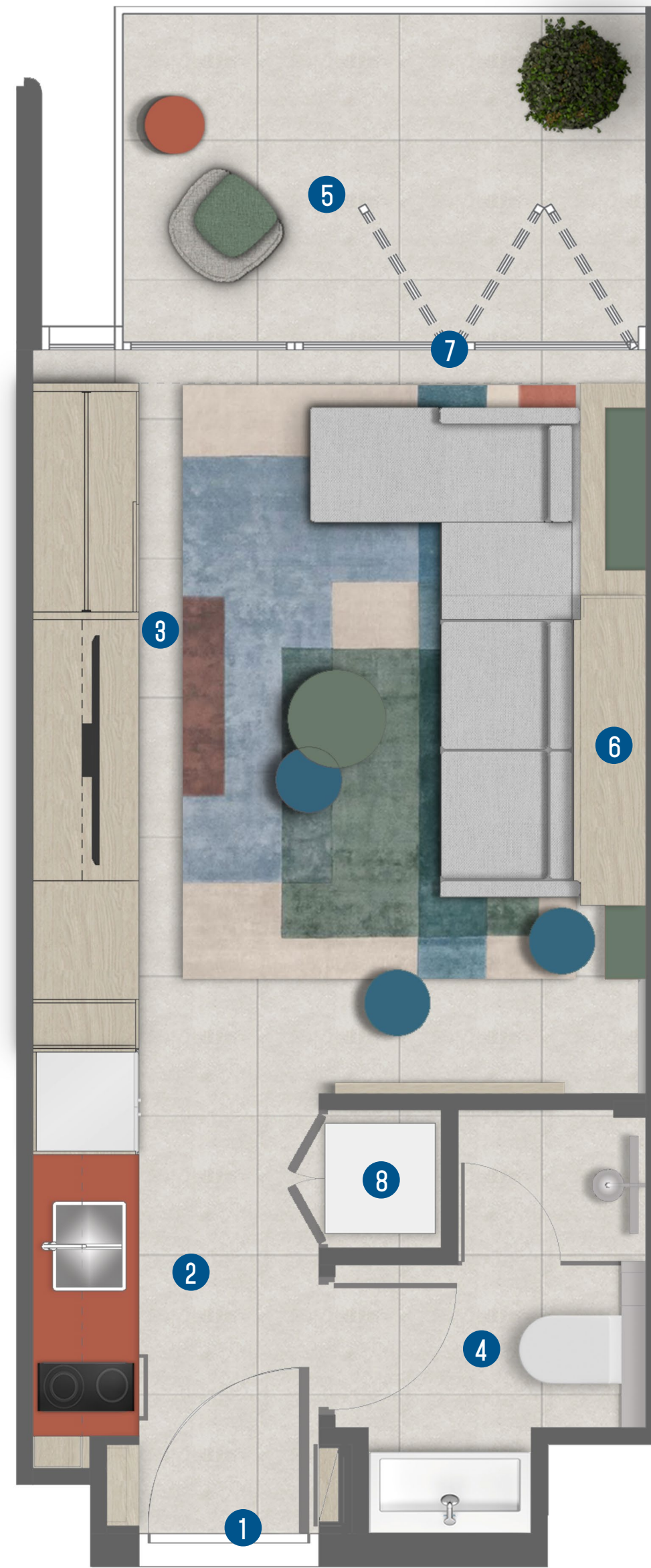
The ROVE logos, trade-marks and trade names (the "ROVE Marks") published in this publication are owned by or licensed to Rove Hotels LLC or its Group Companies (collectively referred to as "ROVE"). The use of the ROVE Marks by IRTS Signature Development LLC (the "Company") has been authorised by ROVE under license, solely in relation to the intention of ROVE to supervise the operation of the "ROVE Home Marasi Drive, Dubai" development located in Business Bay, Dubai (the "Building") and in respect of the marketing and sale of the residences within the Building (the "Residences"). The Building and the Residences are not owned, developed or sold by ROVE. The Company, which is not an affiliate of ROVE, is responsible for the marketing and sales of the Residences. Accordingly, ROVE will not be responsible for: (a) any advertising claims or representations in this publication or otherwise made by the Company; (b) any content in this publication; (c) any marketing and/or data collection practices carried out by the Company; (d) any dealings or communications that you have with the Company; and (e) any infringement of third party rights or local laws in connection with this publication. ROVE strongly recommends that you confirm any information appearing in this publication and consult your professional advisors before proceeding with any related transaction. To the maximum extent permitted by law, ROVE will not be liable for any form of loss or damage arising out of or in connection with this publication, the Building, the Residences, or any dealings or communications that you have with the Company.

All images used are for illustrative purposes only and do not represent the actual size, features, specifications, fittings, and furnishings. The developer reserves the right to make revisions / alterations, at its absolute discretion, without any liability whatsoever.

STUDIO 2

Legend

1. Entrance
2. Kitchen
1.80m X 3.00m
3. Living Room & Bedroom
3.75m X 4.25m
4. Bathroom
1.95m X 2.65m
5. Balcony
3.25m X 2.15m
6. Foldable Bed
7. Bi-fold Glass Doors
8. Laundry



Folded Layout



Unfolded Layout

LEVELS 5-21



LEVELS 24-31



STUDIO 2	SQFT
INTERNAL AREA	309-339
BALCONY AREA	78-81
TOTAL AREA	386-416

The ROVE logos, trade-marks and trade names (the «ROVE Marks») published in this publication are owned by or licensed to Rove Hotels LLC or its Group Companies (collectively referred to as «ROVE»). The use of the ROVE Marks by IRTH Signature Development LLC (the «Company») has been authorised by ROVE under license, solely in relation to the intention of ROVE to supervise the operation of the «ROVE Home Marasi Drive, Dubai» development located in Business Bay, Dubai (the «Building») and in respect of the marketing and sale of the residences within the Building (the «Residences»). The Building and the Residences are not owned, developed or sold by ROVE. The Company, which is not an affiliate of ROVE, is responsible for the marketing and sales of the Residences. Accordingly, ROVE will not be responsible for: (a) any advertising claims or representations in this publication or otherwise made by the Company; (b) any content in this publication; (c) any marketing and/or data collection practices carried out by the Company; (d) any dealings or communications that you have with the Company; and (e) any infringement of third party rights or local laws in connection with this publication. ROVE strongly recommends that you confirm any information appearing in this publication and consult your professional advisors before proceeding with any related transaction. To the maximum extent permitted by law, ROVE will not be liable for any form of loss or damage arising out of or in connection with this publication, the Building, the Residences, or any dealings or communications that you have with the Company.

All images used are for illustrative purposes only and do not represent the actual size, features, specifications, fittings, and furnishings. The developer reserves the right to make revisions / alterations, at its absolute discretion, without any liability whatsoever.

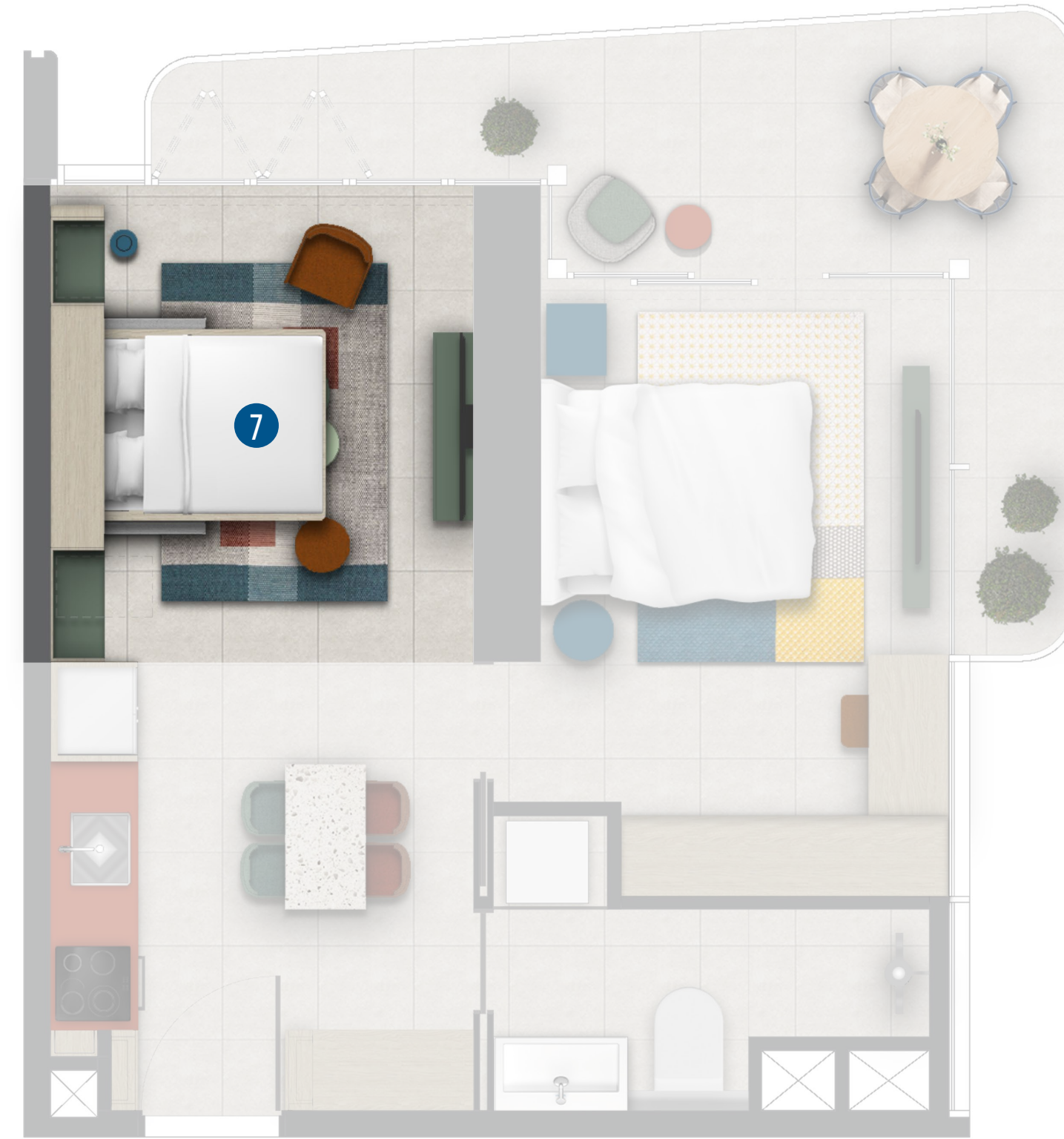
1 BEDROOM² TYPE A

Legend

1. Entrance
2. Kitchen & Dining Area
3.225m X 3.35m
3. Bedroom
3.10m X 4.70m
4. Bathroom
3.325m X 2.225m
5. Living Room
3.15m X 3.60m
6. Balcony
6.95m X 1.75m
7. Foldable Bed
8. Laundry
9. Bi-fold Glass Doors



Folded Layout



Unfolded Layout

ALL LEVELS



1 BEDROOM ²	SQFT
INTERNAL AREA	492
BALCONY AREA	129
TOTAL AREA	622

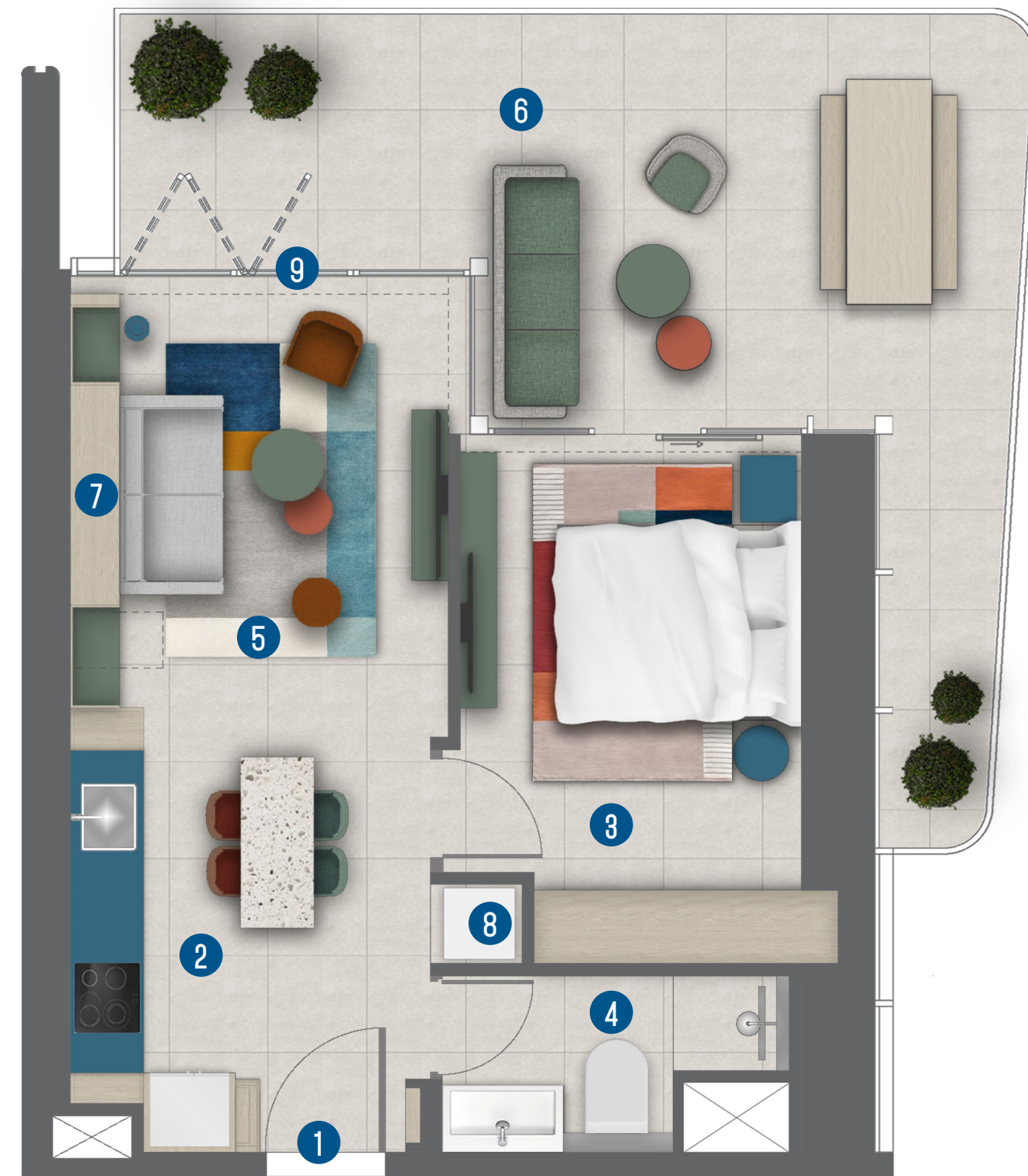
The ROVE logos, trade-marks and trade names (the «ROVE Marks») published in this publication are owned by or licensed to Rove Hotels LLC or its Group Companies (collectively referred to as «ROVE»). The use of the ROVE Marks by IRTH Signature Development LLC (the «Company») has been authorised by ROVE under license, solely in relation to the intention of ROVE to supervise the operation of the «ROVE Home Marasi Drive, Dubai» development located in Business Bay, Dubai (the «Building») and in respect of the marketing and sale of the residences within the Building (the «Residences»). The Building and the Residences are not owned, developed or sold by ROVE. The Company, which is not an affiliate of ROVE, is responsible for the marketing and sales of the Residences. Accordingly, ROVE will not be responsible for: (a) any advertising claims or representations in this publication or otherwise made by the Company; (b) any content in this publication; (c) any marketing and/or data collection practices carried out by the Company; (d) any dealings or communications that you have with the Company; and (e) any infringement of third party rights or local laws in connection with this publication. ROVE strongly recommends that you confirm any information appearing in this publication and consult your professional advisors before proceeding with any related transaction. To the maximum extent permitted by law, ROVE will not be liable for any form of loss or damage arising out of or in connection with this publication, the Building, the Residences, or any dealings or communications that you have with the Company.

All images used are for illustrative purposes only and do not represent the actual size, features, specifications, fittings, and furnishings. The developer reserves the right to make revisions / alterations, at its absolute discretion, without any liability whatsoever.

1 BEDROOM² TYPE B

Legend

1. Entrance
2. Kitchen & Dining Area
3.00m X 3.85m
3. Bedroom
2.85m X 4.40m
4. Bathroom
3.40m X 1.55m
5. Living Room
3.15m X 3.60m
6. Balcony
7.15m X 3.45m
7. Foldable Bed
8. Laundry
9. Bi-fold Glass Doors



Folded Layout



Unfolded Layout

ALL LEVELS



STUDIO ²	SQFT
INTERNAL AREA	488-507
BALCONY AREA	263
TOTAL AREA	751-770

The ROVE logos, trade-marks and trade names (the «ROVE Marks») published in this publication are owned by or licensed to Rove Hotels LLC or its Group Companies (collectively referred to as «ROVE»). The use of the ROVE Marks by IRTH Signature Development LLC (the «Company») has been authorised by ROVE under license, solely in relation to the intention of ROVE to supervise the operation of the «ROVE Home Marasi Drive, Dubai» development located in Business Bay, Dubai (the «Building») and in respect of the marketing and sale of the residences within the Building (the «Residences»). The Building and the Residences are not owned, developed or sold by ROVE. The Company, which is not an affiliate of ROVE, is responsible for the marketing and sales of the Residences. Accordingly, ROVE will not be responsible for: (a) any advertising claims or representations in this publication or otherwise made by the Company; (b) any content in this publication; (c) any marketing and/or data collection practices carried out by the Company; (d) any dealings or communications that you have with the Company; and (e) any infringement of third party rights or local laws in connection with this publication. ROVE strongly recommends that you confirm any information appearing in this publication and consult your professional advisors before proceeding with any related transaction. To the maximum extent permitted by law, ROVE will not be liable for any form of loss or damage arising out of or in connection with this publication, the Building, the Residences, or any dealings or communications that you have with the Company.

All images used are for illustrative purposes only and do not represent the actual size, features, specifications, fittings, and furnishings. The developer reserves the right to make revisions / alterations, at its absolute discretion, without any liability whatsoever.

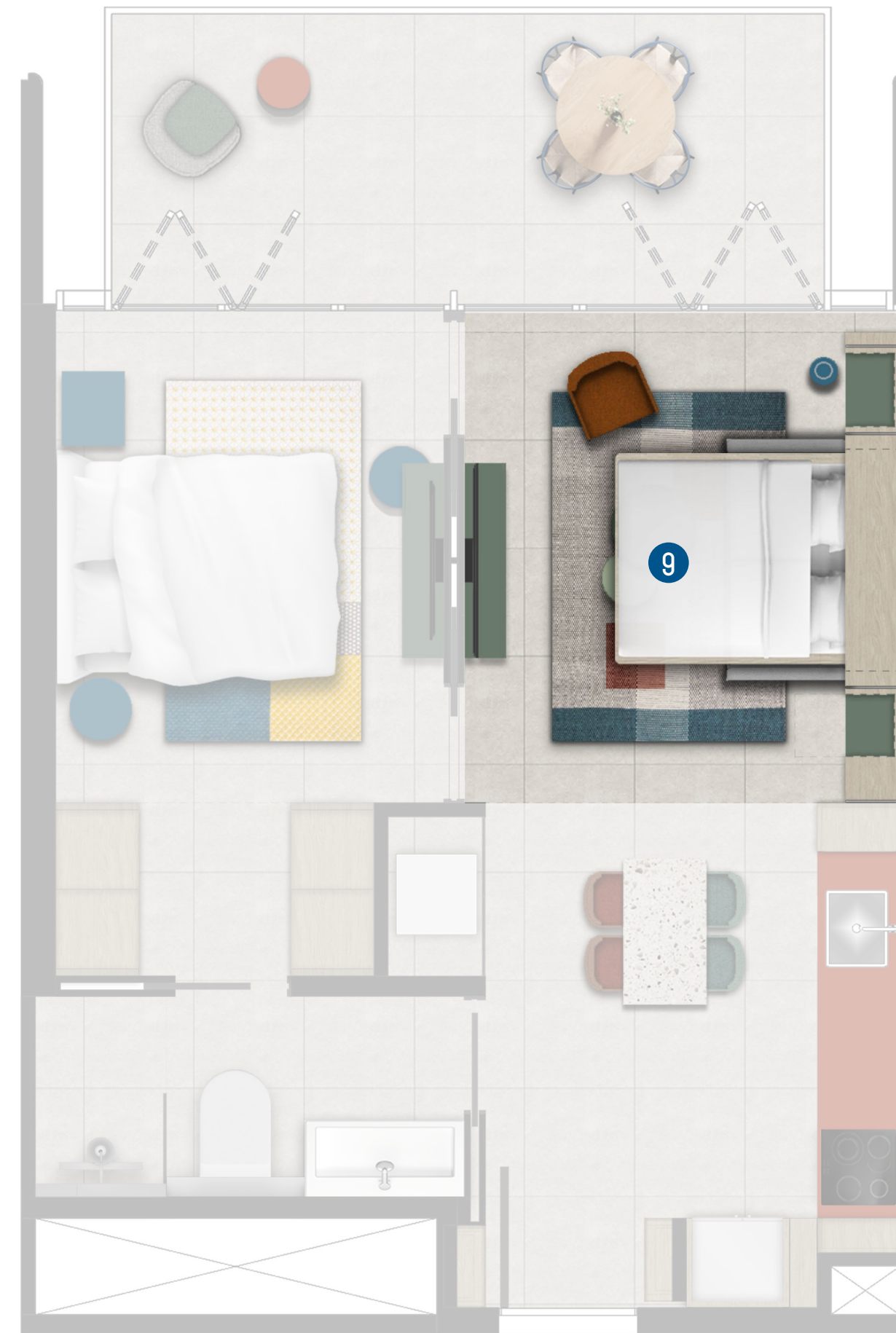
1 BEDROOM² TYPE C

Legend

1. Entrance
2. Kitchen & Dining Area
3.00m X 3.65m
3. Living Room
3.225m X 3.60m
4. Bedroom
2.875m X 3.60m
5. Walk-in Closet
2.35m X 1.325m
6. Bathroom
3.175m X 1.525m
7. Balcony
5.25m X 2.15m
8. Pocket Walls
9. Foldable Bed
10. Laundry
11. Bi-fold Glass Doors



Folded Layout



Unfolded Layout

ALL LEVELS



1BEDROOM ²	SQFT
INTERNAL AREA	487-520
BALCONY AREA	121-122
TOTAL AREA	608-642

The ROVE logos, trade-marks and trade names (the «ROVE Marks») published in this publication are owned by or licensed to Rove Hotels LLC or its Group Companies (collectively referred to as «ROVE»). The use of the ROVE Marks by IRTH Signature Development LLC (the «Company») has been authorised by ROVE under license, solely in relation to the intention of ROVE to supervise the operation of the «ROVE Home Marasi Drive, Dubai» development located in Business Bay, Dubai (the «Building») and in respect of the marketing and sale of the residences within the Building (the «Residences»). The Building and the Residences are not owned, developed or sold by ROVE. The Company, which is not an affiliate of ROVE, is responsible for the marketing and sales of the Residences. Accordingly, ROVE will not be responsible for: (a) any advertising claims or representations in this publication or otherwise made by the Company; (b) any content in this publication; (c) any marketing and/or data collection practices carried out by the Company; (d) any dealings or communications that you have with the Company; and (e) any infringement of third party rights or local laws in connection with this publication. ROVE strongly recommends that you confirm any information appearing in this publication and consult your professional advisors before proceeding with any related transaction. To the maximum extent permitted by law, ROVE will not be liable for any form of loss or damage arising out of or in connection with this publication, the Building, the Residences, or any dealings or communications that you have with the Company.

All images used are for illustrative purposes only and do not represent the actual size, features, specifications, fittings, and furnishings. The developer reserves the right to make revisions / alterations, at its absolute discretion, without any liability whatsoever.

1 BEDROOM² TYPE D

Legend

1. Entrance
2. Kitchen & Dining Area
3.275m X 3.55m
3. Living Room
3.575m X 3.45m
4. Bedroom
3.375m X 3.90m
5. Bathroom
3.175m X 1.50m
6. Balcony
4.7m X 2.4m
7. Pocket Walls
8. Foldable Bed
9. Laundry
10. Bi-fold Glass Doors



Folded Layout



Unfolded Layout

LEVELS 5-21



LEVELS 24-31



1 BEDROOM ²	SQFT
INTERNAL AREA	486-501
BALCONY AREA	118-121
TOTAL AREA	607-619

The ROVE logos, trade-marks and trade names (the «ROVE Marks») published in this publication are owned by or licensed to Rove Hotels LLC or its Group Companies (collectively referred to as «ROVE»). The use of the ROVE Marks by IRTH Signature Development LLC (the «Company») has been authorised by ROVE under license, solely in relation to the intention of ROVE to supervise the operation of the «ROVE Home Marasi Drive, Dubai» development located in Business Bay, Dubai (the «Building») and in respect of the marketing and sale of the residences within the Building (the «Residences»). The Building and the Residences are not owned, developed or sold by ROVE. The Company, which is not an affiliate of ROVE, is responsible for the marketing and sales of the Residences. Accordingly, ROVE will not be responsible for: (a) any advertising claims or representations in this publication or otherwise made by the Company; (b) any content in this publication; (c) any marketing and/or data collection practices carried out by the Company; (d) any dealings or communications that you have with the Company; and (e) any infringement of third party rights or local laws in connection with this publication. ROVE strongly recommends that you confirm any information appearing in this publication and consult your professional advisors before proceeding with any related transaction. To the maximum extent permitted by law, ROVE will not be liable for any form of loss or damage arising out of or in connection with this publication, the Building, the Residences, or any dealings or communications that you have with the Company.

All images used are for illustrative purposes only and do not represent the actual size, features, specifications, fittings, and furnishings. The developer reserves the right to make revisions / alterations, at its absolute discretion, without any liability whatsoever.

2 BEDROOM² TYPE A

Legend

1. Entrance
2. Kitchen & Dining Area
3.50m X 2.75m
3. Living Room
3.50m X 3.75m
4. Bathroom
1.45m X 2.70m
5. Master Bedroom
3.00m X 3.25m
6. Master Bathroom
2.025m X 2.2m
7. Bedroom
2.90m X 3.80m
8. Balcony
7.3m X 2.25m
9. Foldable Bed
10. Study Den
11. Bi-fold Glass Doors
12. Laundry



ALL LEVELS



2 BEDROOM ²	SQFT
INTERNAL AREA	737
BALCONY AREA	177
TOTAL AREA	914

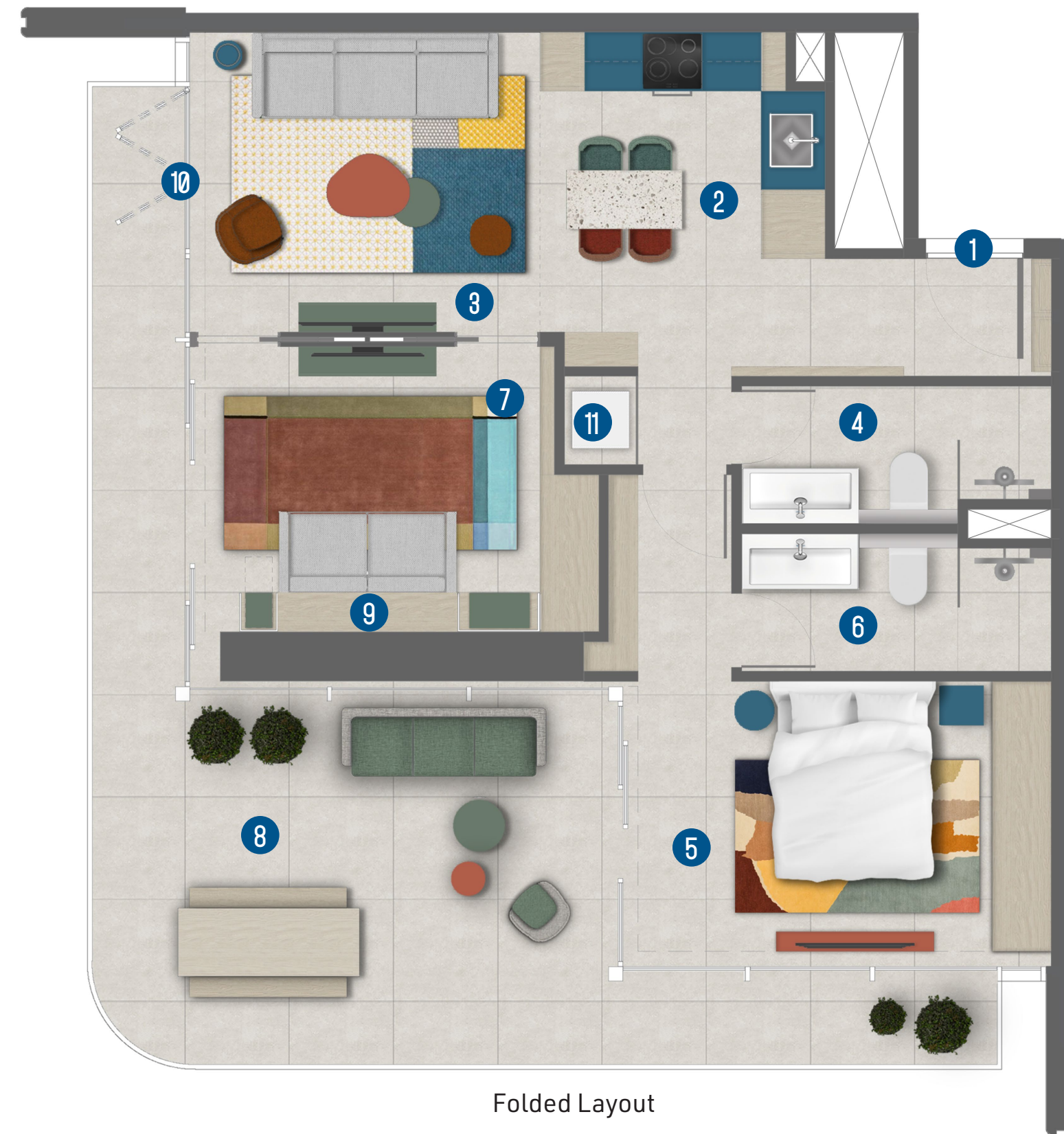
The ROVE logos, trade-marks and trade names (the «ROVE Marks») published in this publication are owned by or licensed to Rove Hotels LLC or its Group Companies (collectively referred to as «ROVE»). The use of the ROVE Marks by IRTH Signature Development LLC (the «Company») has been authorised by ROVE under license, solely in relation to the intention of ROVE to supervise the operation of the «ROVE Home Marasi Drive, Dubai» development located in Business Bay, Dubai (the «Building») and in respect of the marketing and sale of the residences within the Building (the «Residences»). The Building and the Residences are not owned, developed or sold by ROVE. The Company, which is not an affiliate of ROVE, is responsible for the marketing and sales of the Residences. Accordingly, ROVE will not be responsible for: (a) any advertising claims or representations in this publication or otherwise made by the Company; (b) any content in this publication; (c) any marketing and/or data collection practices carried out by the Company; (d) any dealings or communications that you have with the Company; and (e) any infringement of third party rights or local laws in connection with this publication. ROVE strongly recommends that you confirm any information appearing in this publication and consult your professional advisors before proceeding with any related transaction. To the maximum extent permitted by law, ROVE will not be liable for any form of loss or damage arising out of or in connection with this publication, the Building, the Residences, or any dealings or communications that you have with the Company.

All images used are for illustrative purposes only and do not represent the actual size, features, specifications, fittings, and furnishings. The developer reserves the right to make revisions / alterations, at its absolute discretion, without any liability whatsoever.

2 BEDROOM² TYPE B

Legend

1. Entrance
2. Kitchen & Dining Area
2.90m X 3.55m
3. Living Room
3.60m X 3.125m
4. Bathroom
3.20m X 1.50m
5. Master Bedroom
4.40m X 2.985m
6. Master Bathroom
3.20m X 1.50m
7. Bedroom
4.25m X 2.975m
8. Balcony
5.4m X 3.75m
9. Foldable Bed
10. Bi-fold Glass Doors
11. Laundry



ALL LEVELS



2 BEDROOM ²	SQFT
INTERNAL AREA	729
BALCONY AREA	328
TOTAL AREA	1,058

The ROVE logos, trade-marks and trade names (the «ROVE Marks») published in this publication are owned by or licensed to Rove Hotels LLC or its Group Companies (collectively referred to as «ROVE»). The use of the ROVE Marks by IRTS Signature Development LLC (the «Company») has been authorised by ROVE under license, solely in relation to the intention of ROVE to supervise the operation of the «ROVE Home Marasi Drive, Dubai» development located in Business Bay, Dubai (the «Building») and in respect of the marketing and sale of the residences within the Building (the «Residences»). The Building and the Residences are not owned, developed or sold by ROVE. The Company, which is not an affiliate of ROVE, is responsible for the marketing and sales of the Residences. Accordingly, ROVE will not be responsible for: (a) any advertising claims or representations in this publication or otherwise made by the Company; (b) any content in this publication; (c) any marketing and/or data collection practices carried out by the Company; (d) any dealings or communications that you have with the Company; and (e) any infringement of third party rights or local laws in connection with this publication. ROVE strongly recommends that you confirm any information appearing in this publication and consult your professional advisors before proceeding with any related transaction. To the maximum extent permitted by law, ROVE will not be liable for any form of loss or damage arising out of or in connection with this publication, the Building, the Residences, or any dealings or communications that you have with the Company.

All images used are for illustrative purposes only and do not represent the actual size, features, specifications, fittings, and furnishings. The developer reserves the right to make revisions / alterations, at its absolute discretion, without any liability whatsoever.