

SIX SENSES
RESIDENCES
DUBAI MARINA

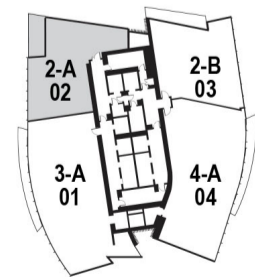
A development by
**SELECT
GROUP**



A

2 Bedrooms
Type A | Unit 02
Tier 1, Levels 07 - 21

SEA / SKYLINE / PALM



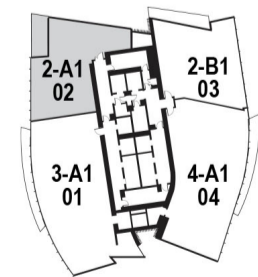
Apartment Area	167.01 m ²	1,797.68 f ²
Balcony Area	18.84 m ²	202.79 f ²
Total Area	185.85 m²	2,000.47 f²

Drawings are provided by our consultants. All dimensions, features and amenities are approximate at time of printing. Actual size may vary from stated area. Drawings not to scale E & OE. The developer reserves the right to make revisions to the floor plans and any features, materials and dimensions mentioned without further notice.

A1

2 Bedrooms
Type A1 | Unit 02
Tier 2, Levels 24 - 38

SEA / SKYLINE / PALM



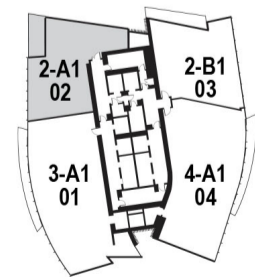
Apartment Area	166.78 m ²	1,795.20 f ²
Balcony Area	18.84 m ²	202.79 f ²
Total Area	185.62 m²	1,998.00 f²

Drawings are provided by our consultants. All dimensions, features and amenities are approximate at time of printing. Actual size may vary from stated area. Drawings not to scale E & OE. The developer reserves the right to make revisions to the floor plans and any features, materials and dimensions mentioned without further notice.

A1

2 Bedrooms
Type A1 | Unit 02
Tier 2, Levels 24 - 38

SEA / SKYLINE / PALM



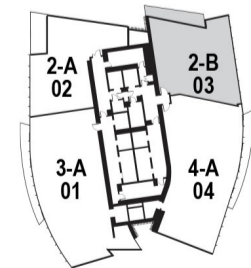
Apartment Area	166.78 m ²	1,795.20 f ²
Balcony Area	18.84 m ²	202.79 f ²
Total Area	185.62 m²	1,998.00 f²

Drawings are provided by our consultants. All dimensions, features and amenities are approximate at time of printing. Actual size may vary from stated area. Drawings not to scale E & OE. The developer reserves the right to make revisions to the floor plans and any features, materials and dimensions mentioned without further notice.

B

2 Bedrooms
Type B | Unit 03
Tier 1, Levels 07 - 21

SEA / SKYLINE / PALM



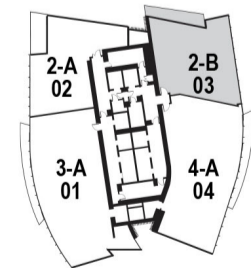
Apartment Area	167.71 m ²	1,805.22 f ²
Balcony Area	18.92 m ²	203.65 f ²
Total Area	186.63 m²	2,008.87 f²

Drawings are provided by our consultants. All dimensions, features and amenities are approximate at time of printing. Actual size may vary from stated area. Drawings not to scale E & OE. The developer reserves the right to make revisions to the floor plans and any features, materials and dimensions mentioned without further notice.

B

2 Bedrooms
Type B | Unit 03
Tier 1, Levels 07 - 21

SEA / SKYLINE / PALM



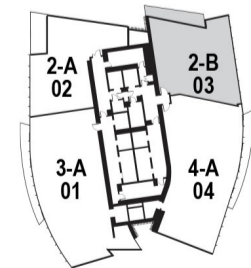
Apartment Area	167.71 m ²	1,805.22 f ²
Balcony Area	18.92 m ²	203.65 f ²
Total Area	186.63 m²	2,008.87 f²

Drawings are provided by our consultants. All dimensions, features and amenities are approximate at time of printing. Actual size may vary from stated area. Drawings not to scale E & OE. The developer reserves the right to make revisions to the floor plans and any features, materials and dimensions mentioned without further notice.

B

2 Bedrooms
Type B | Unit 03
Tier 1, Levels 07 - 21

SEA / SKYLINE / PALM



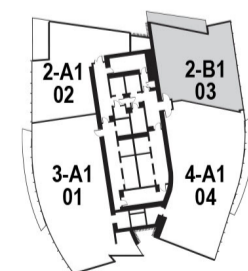
Apartment Area	167.71 m ²	1,805.22 f ²
Balcony Area	18.92 m ²	203.65 f ²
Total Area	186.63 m²	2,008.87 f²

Drawings are provided by our consultants. All dimensions, features and amenities are approximate at time of printing. Actual size may vary from stated area. Drawings not to scale E & OE. The developer reserves the right to make revisions to the floor plans and any features, materials and dimensions mentioned without further notice.

B1

2 Bedrooms
Type B1 | Unit 03
Tier 2, Levels 24 - 38

SEA / SKYLINE / PALM

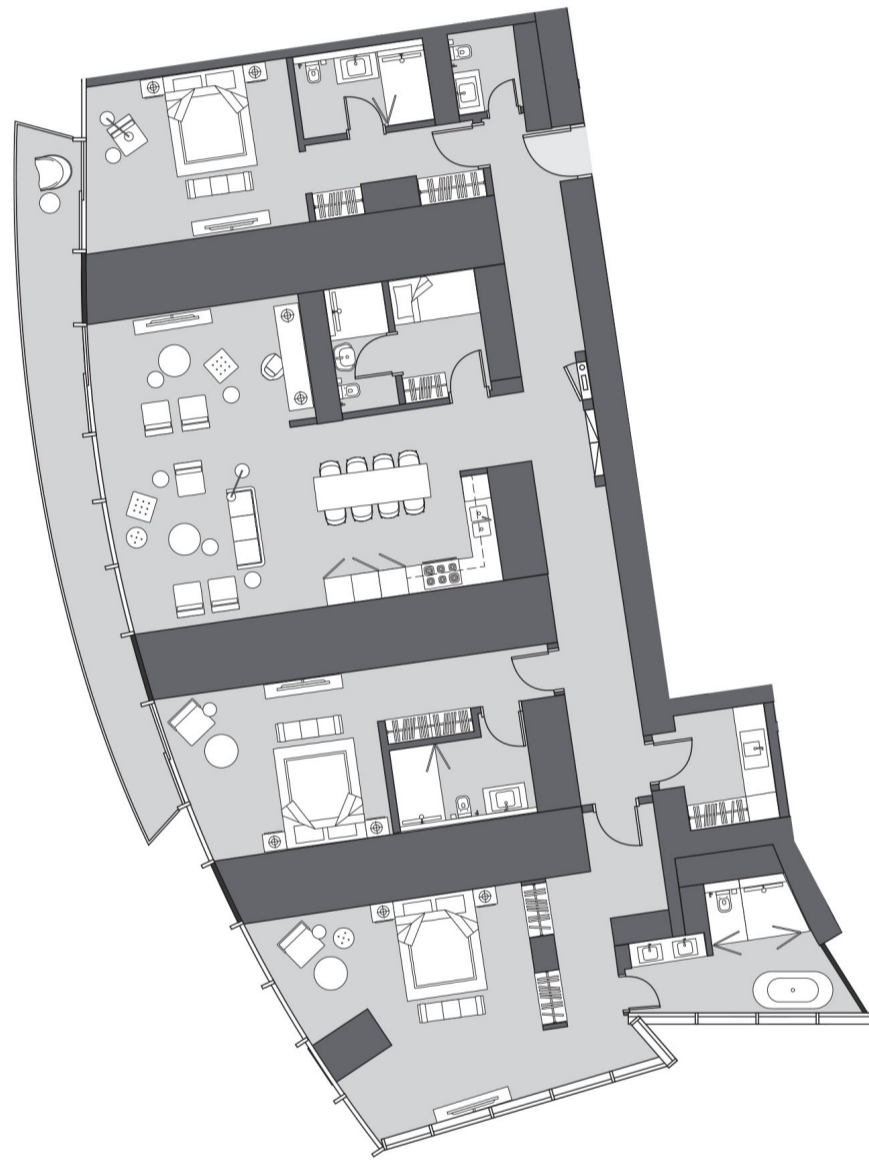


Apartment Area	164.74 m ²	1,773.25 f ²
Balcony Area	18.92 m ²	203.65 f ²
Total Area	183.66 m²	1,976.90 f²

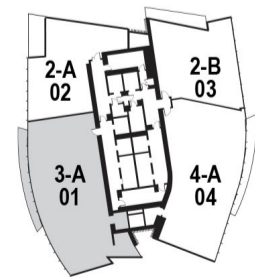
Drawings are provided by our consultants. All dimensions, features and amenities are approximate at time of printing. Actual size may vary from stated area. Drawings not to scale E & OE. The developer reserves the right to make revisions to the floor plans and any features, materials and dimensions mentioned without further notice.

A

3 Bedrooms
Type A | Unit 01
Tier 1, Levels 07 - 21



GOLF / CITY URBAN

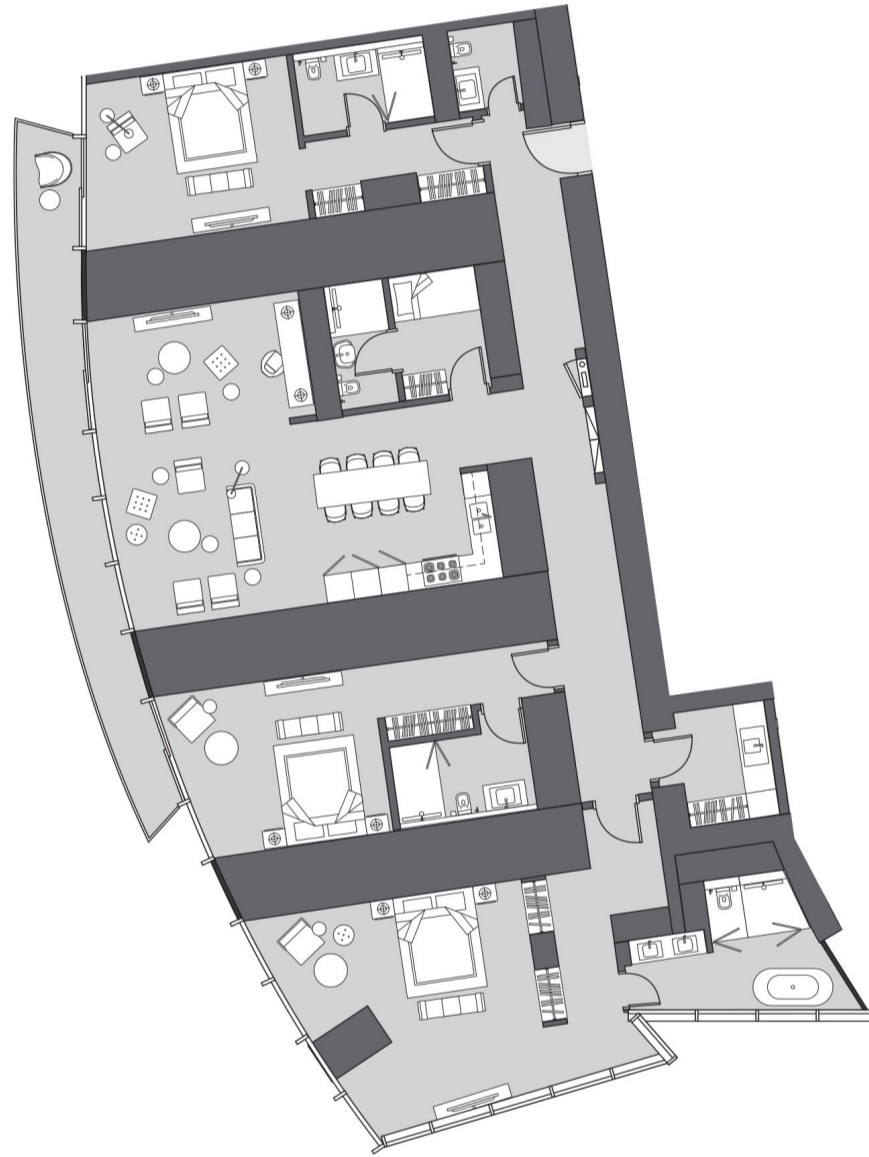


Apartment Area	296.07 m ²	3,186.87 f ²
Balcony Area	20.64 m ²	222.17 f ²
Total Area	316.71 m²	3,409.04 f²

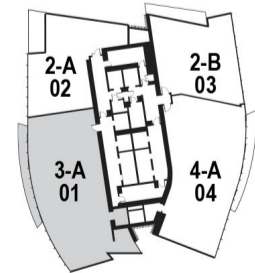
Drawings are provided by our consultants. All dimensions, features and amenities are approximate at time of printing. Actual size may vary from stated area. Drawings not to scale E & OE. The developer reserves the right to make revisions to the floor plans and any features, materials and dimensions mentioned without further notice.

A

3 Bedrooms
Type A | Unit 01
Tier 1, Levels 07 - 21



GOLF / CITY URBAN

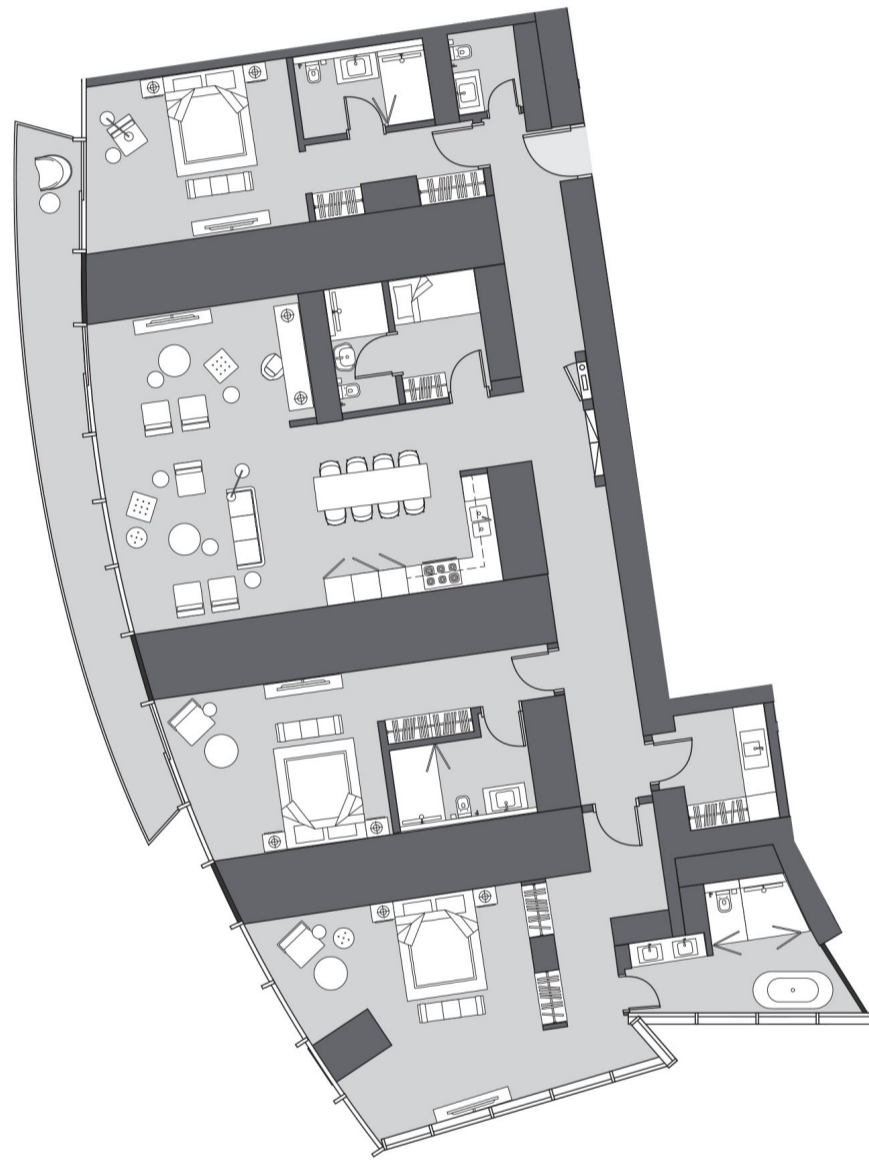


Apartment Area	296.07 m ²	3,186.87 f ²
Balcony Area	20.64 m ²	222.17 f ²
Total Area	316.71 m²	3,409.04 f²

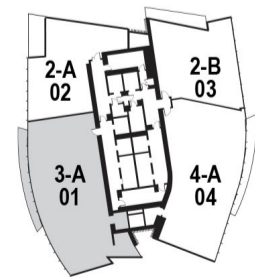
Drawings are provided by our consultants. All dimensions, features and amenities are approximate at time of printing. Actual size may vary from stated area. Drawings not to scale E & OE. The developer reserves the right to make revisions to the floor plans and any features, materials and dimensions mentioned without further notice.

A

3 Bedrooms
Type A | Unit 01
Tier 1, Levels 07 - 21



GOLF / CITY URBAN

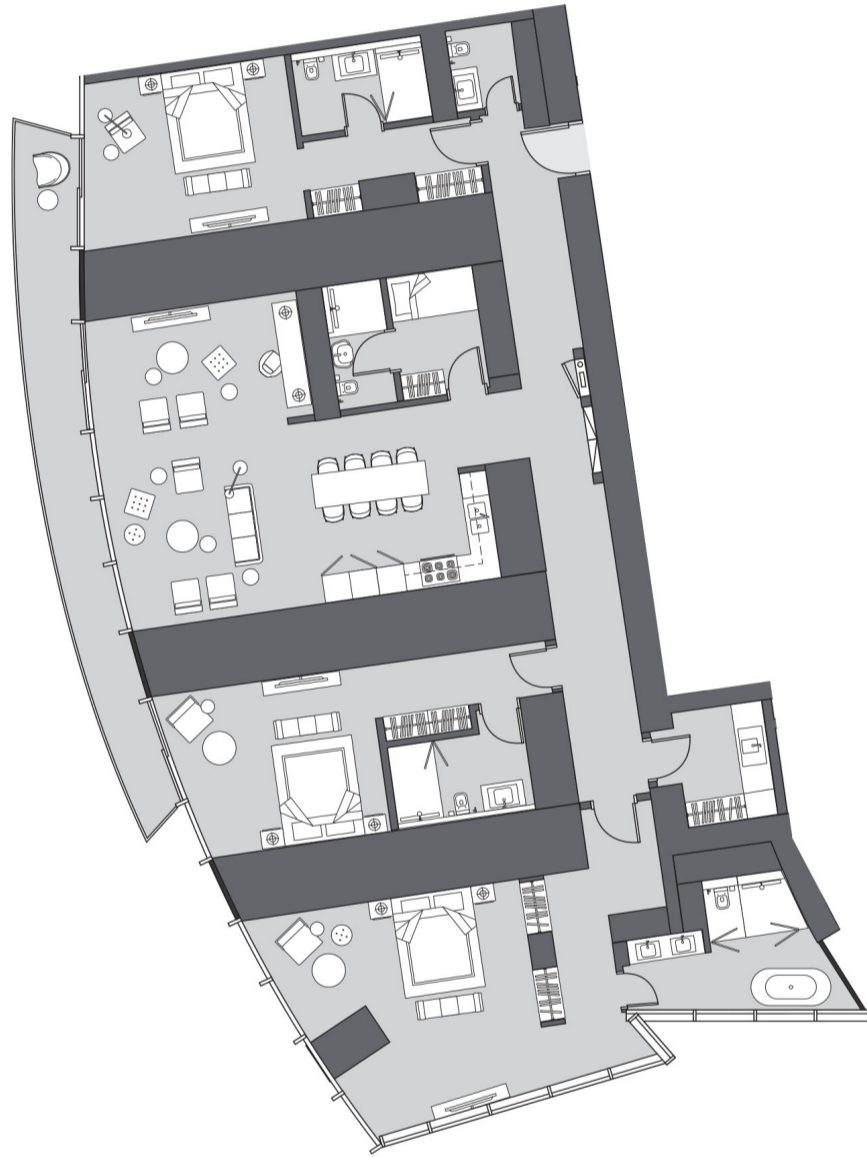


Apartment Area	296.07 m ²	3,186.87 f ²
Balcony Area	20.64 m ²	222.17 f ²
Total Area	316.71 m²	3,409.04 f²

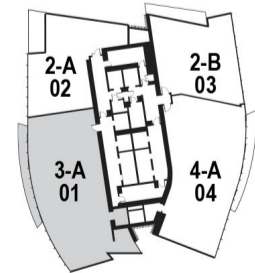
Drawings are provided by our consultants. All dimensions, features and amenities are approximate at time of printing. Actual size may vary from stated area. Drawings not to scale E & OE. The developer reserves the right to make revisions to the floor plans and any features, materials and dimensions mentioned without further notice.

A

3 Bedrooms
Type A | Unit 01
Tier 1, Levels 07 - 21



GOLF / CITY URBAN

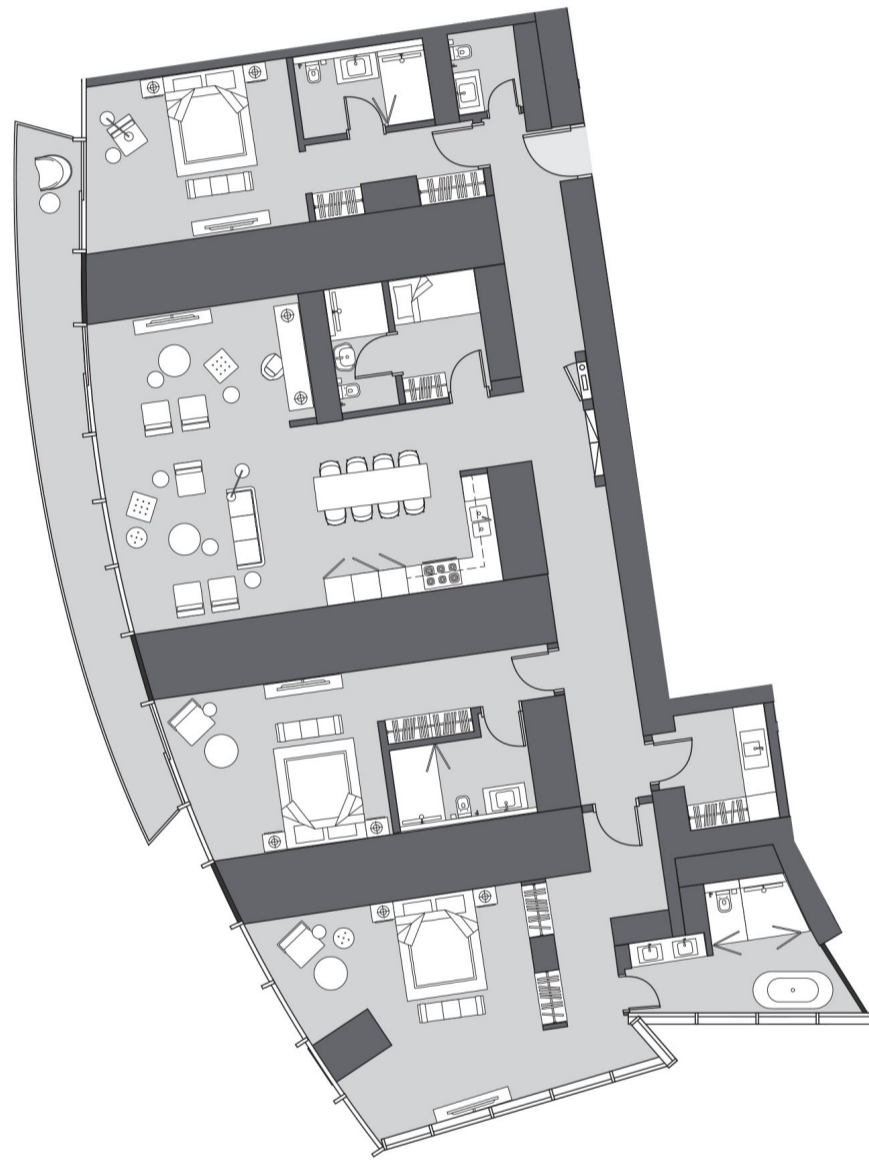


Apartment Area	296.07 m ²	3,186.87 f ²
Balcony Area	20.64 m ²	222.17 f ²
Total Area	316.71 m²	3,409.04 f²

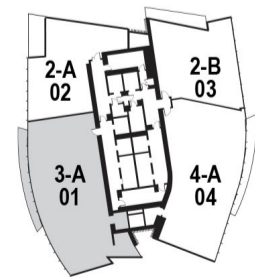
Drawings are provided by our consultants. All dimensions, features and amenities are approximate at time of printing. Actual size may vary from stated area. Drawings not to scale E & OE. The developer reserves the right to make revisions to the floor plans and any features, materials and dimensions mentioned without further notice.

A

3 Bedrooms
Type A | Unit 01
Tier 1, Levels 07 - 21



GOLF / CITY URBAN

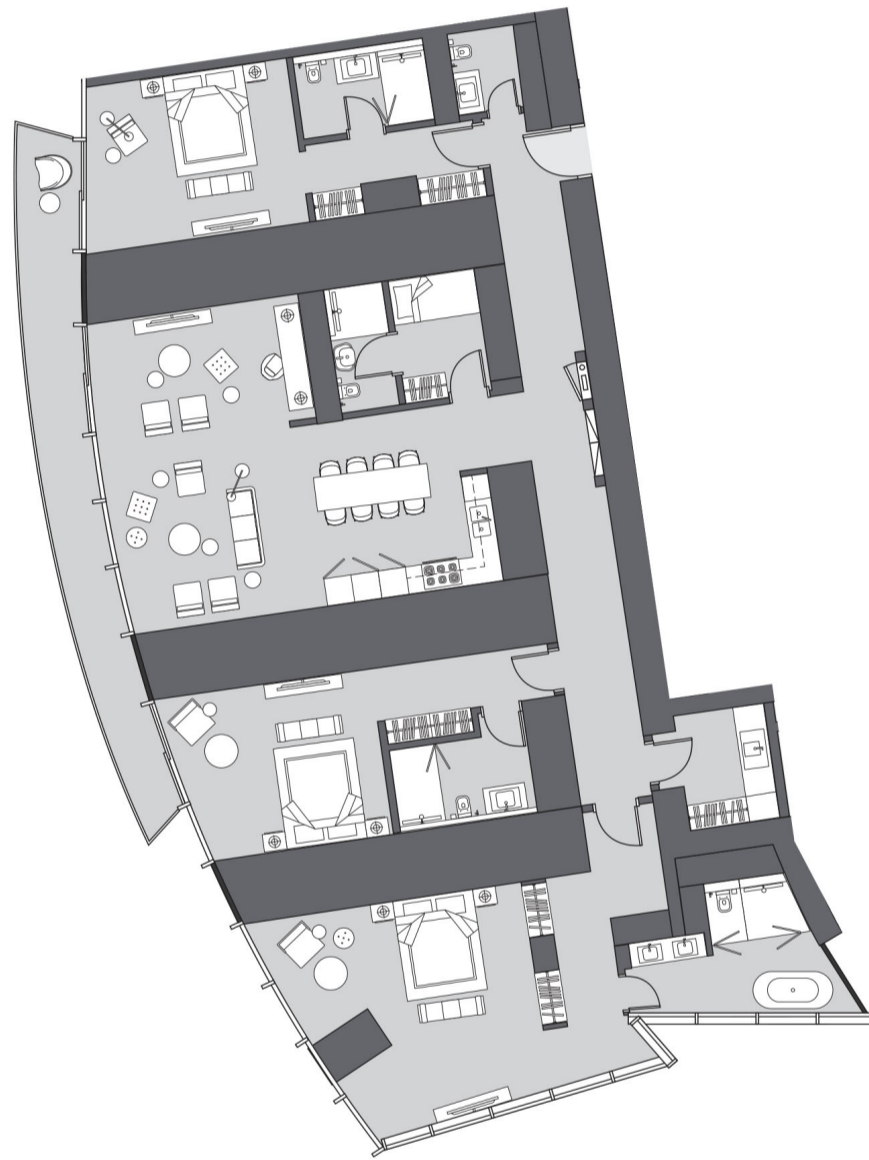


Apartment Area	296.07 m ²	3,186.87 f ²
Balcony Area	20.64 m ²	222.17 f ²
Total Area	316.71 m²	3,409.04 f²

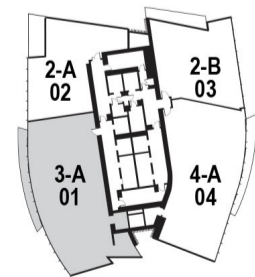
Drawings are provided by our consultants. All dimensions, features and amenities are approximate at time of printing. Actual size may vary from stated area. Drawings not to scale E & OE. The developer reserves the right to make revisions to the floor plans and any features, materials and dimensions mentioned without further notice.

A

3 Bedrooms
Type A | Unit 01
Tier 1, Levels 07 - 21



GOLF / CITY URBAN

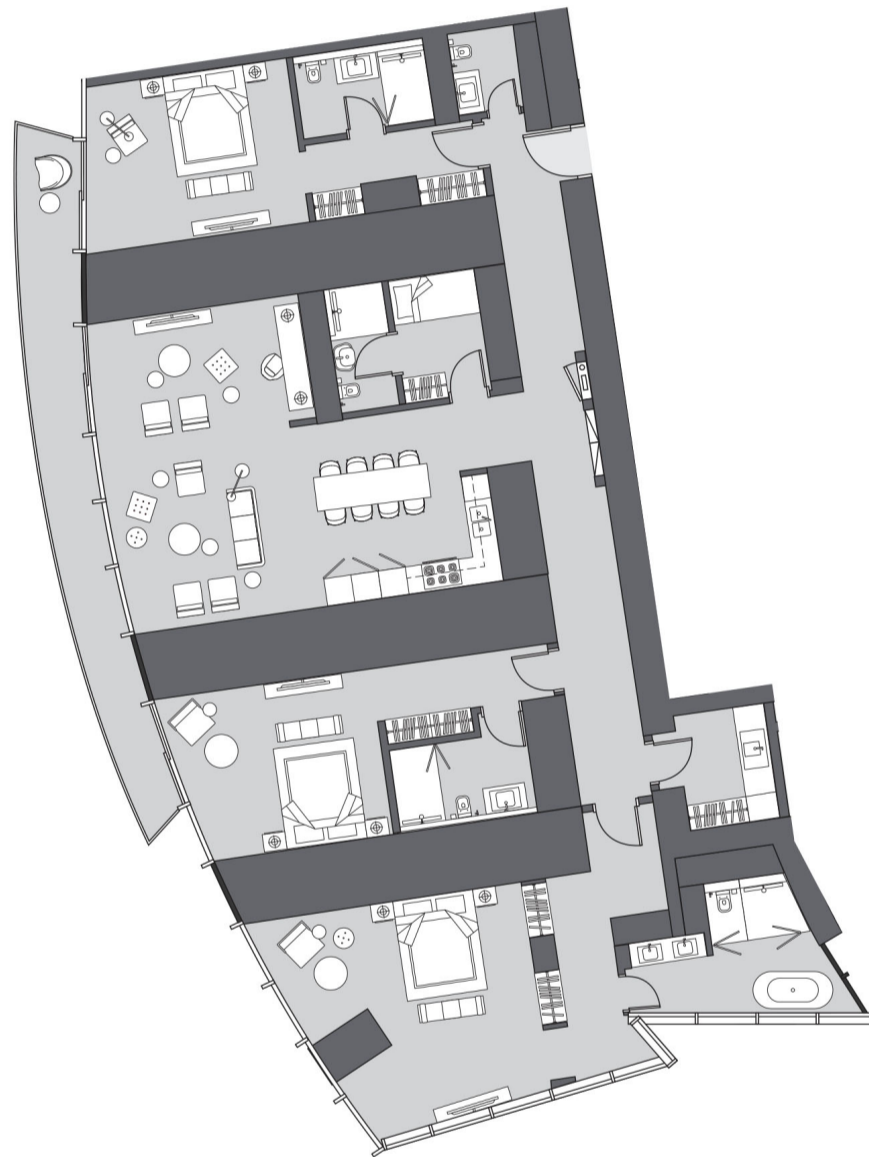


Apartment Area	296.07 m ²	3,186.87 f ²
Balcony Area	20.64 m ²	222.17 f ²
Total Area	316.71 m²	3,409.04 f²

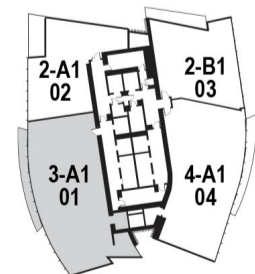
Drawings are provided by our consultants. All dimensions, features and amenities are approximate at time of printing. Actual size may vary from stated area. Drawings not to scale E & OE. The developer reserves the right to make revisions to the floor plans and any features, materials and dimensions mentioned without further notice.

A1

3 Bedrooms
Type A1 | Unit 01
Tier 2, Levels 24 - 38



GOLF / CITY URBAN

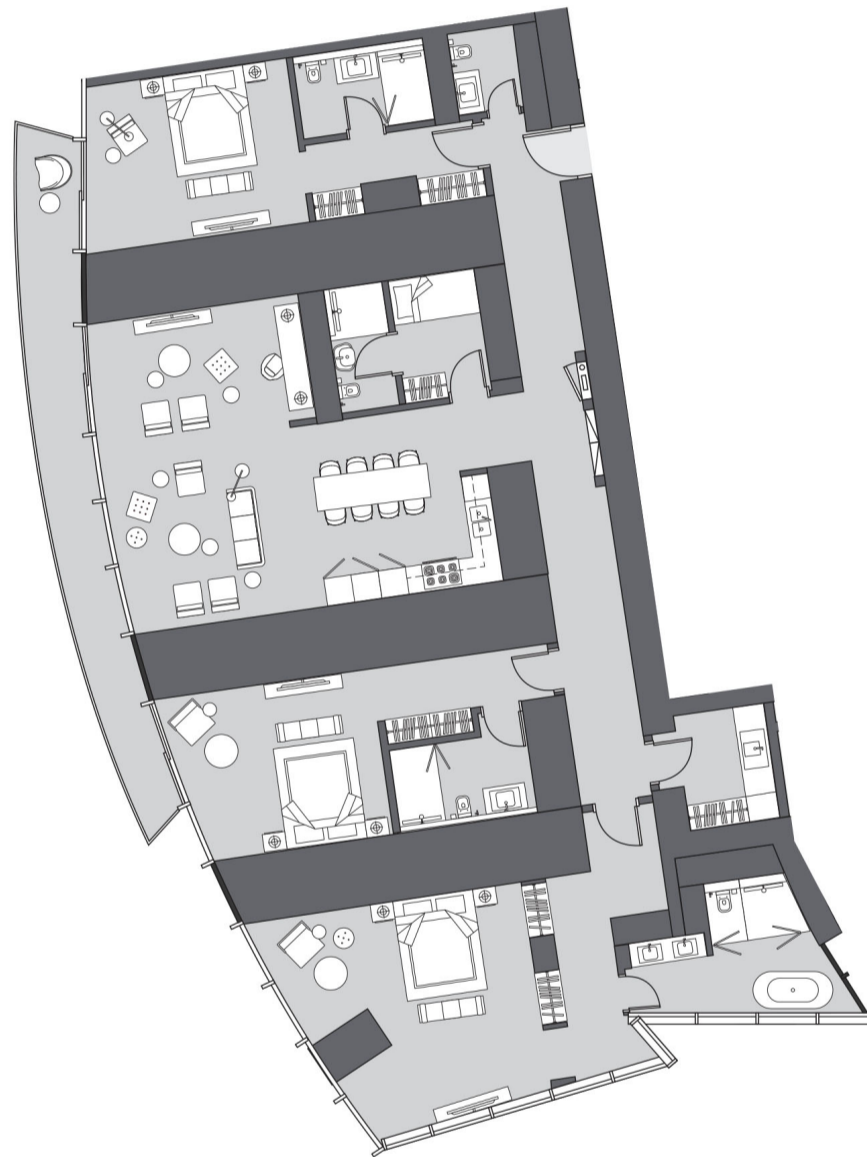


Apartment Area	295.8 m ²	3,183.96 f ²
Balcony Area	20.64 m ²	222.17 f ²
Total Area	316.44 m²	3,406.13 f²

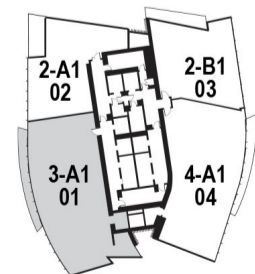
Drawings are provided by our consultants. All dimensions, features and amenities are approximate at time of printing. Actual size may vary from stated area. Drawings not to scale E & OE. The developer reserves the right to make revisions to the floor plans and any features, materials and dimensions mentioned without further notice.

A1

3 Bedrooms
Type A1 | Unit 01
Tier 2, Levels 24 - 38



GOLF / CITY URBAN

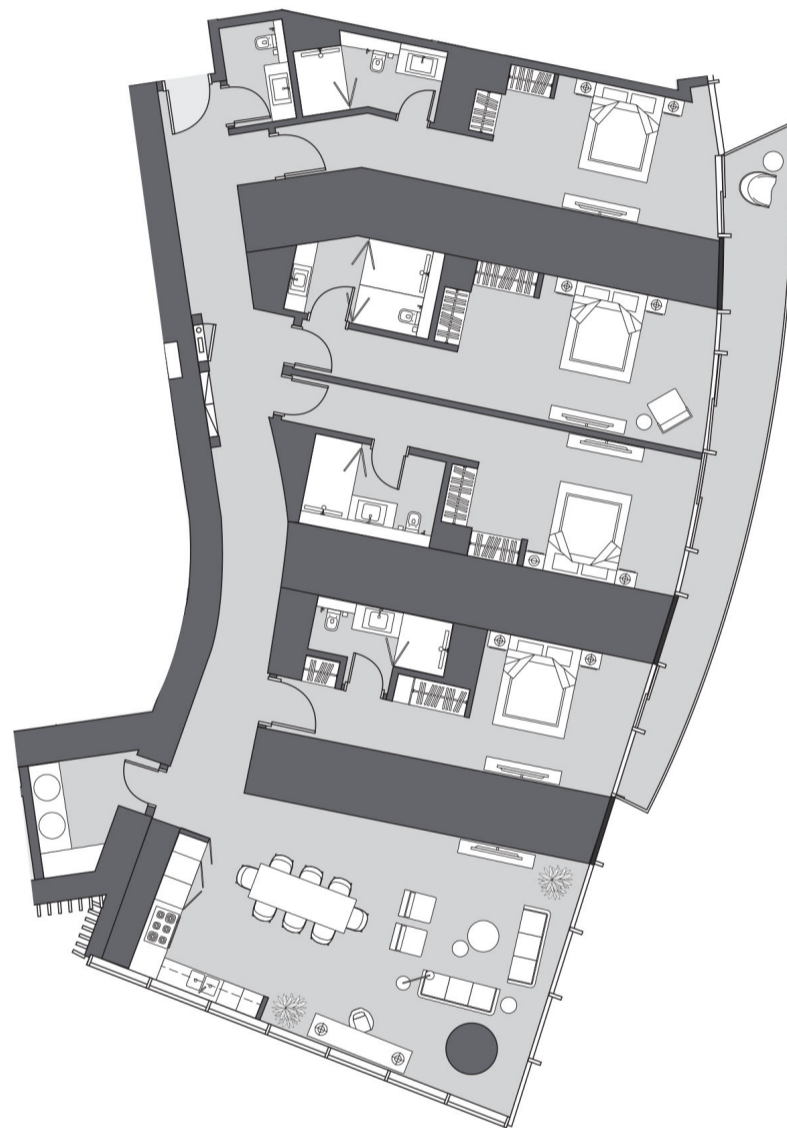


Apartment Area	295.8 m ²	3,183.96 f ²
Balcony Area	20.64 m ²	222.17 f ²
Total Area	316.44 m²	3,406.13 f²

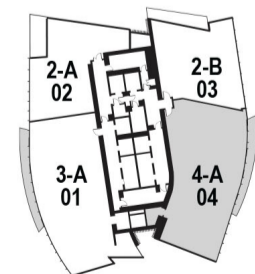
Drawings are provided by our consultants. All dimensions, features and amenities are approximate at time of printing. Actual size may vary from stated area. Drawings not to scale E & OE. The developer reserves the right to make revisions to the floor plans and any features, materials and dimensions mentioned without further notice.

A

4 Bedrooms
Type A | Unit 04
Tier 1, Levels 07 - 21



GOLF / CITY URBAN

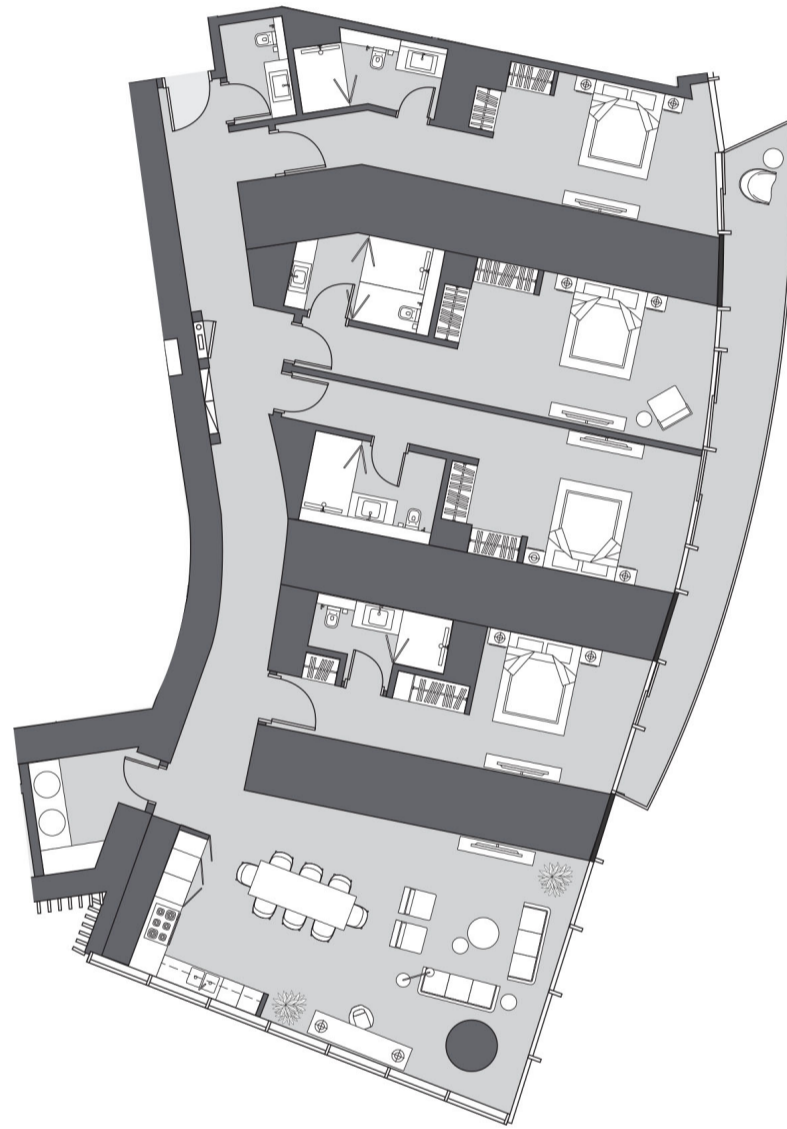


Apartment Area	286.37 m ²	3,082.46 f ²
Balcony Area	21.85 m ²	235.19 f ²
Total Area	308.22 m²	3,317.65 f²

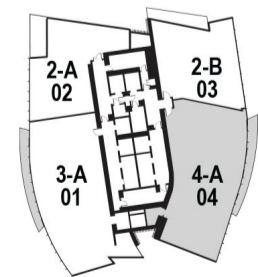
Drawings are provided by our consultants. All dimensions, features and amenities are approximate at time of printing. Actual size may vary from stated area. Drawings not to scale E & OE. The developer reserves the right to make revisions to the floor plans and any features, materials and dimensions mentioned without further notice.

A

4 Bedrooms
Type A | Unit 04
Tier 1, Levels 07 - 21



GOLF / CITY URBAN

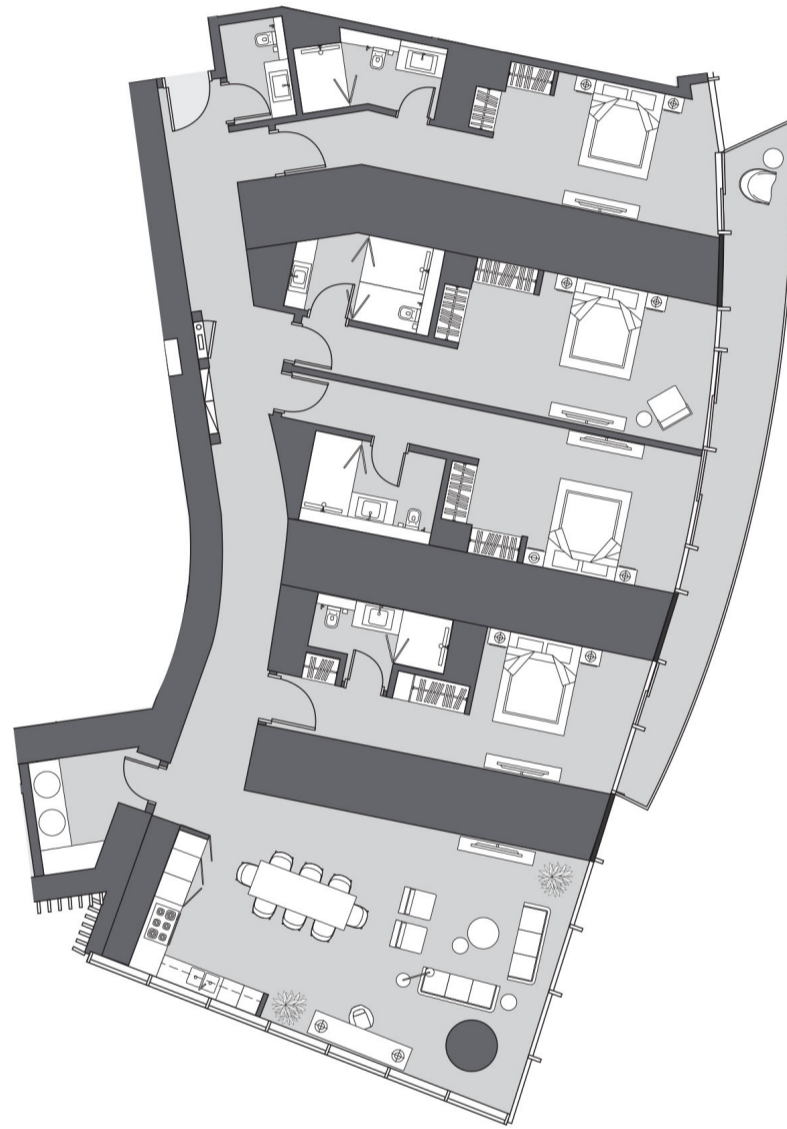


Apartment Area	286.37 m ²	3,082.46 f ²
Balcony Area	21.85 m ²	235.19 f ²
Total Area	308.22 m²	3,317.65 f²

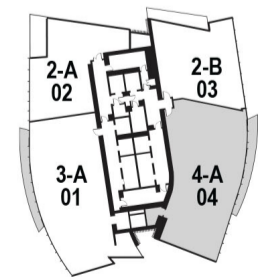
Drawings are provided by our consultants. All dimensions, features and amenities are approximate at time of printing. Actual size may vary from stated area. Drawings not to scale E & OE. The developer reserves the right to make revisions to the floor plans and any features, materials and dimensions mentioned without further notice.

A

4 Bedrooms
Type A | Unit 04
Tier 1, Levels 07 - 21



GOLF / CITY URBAN

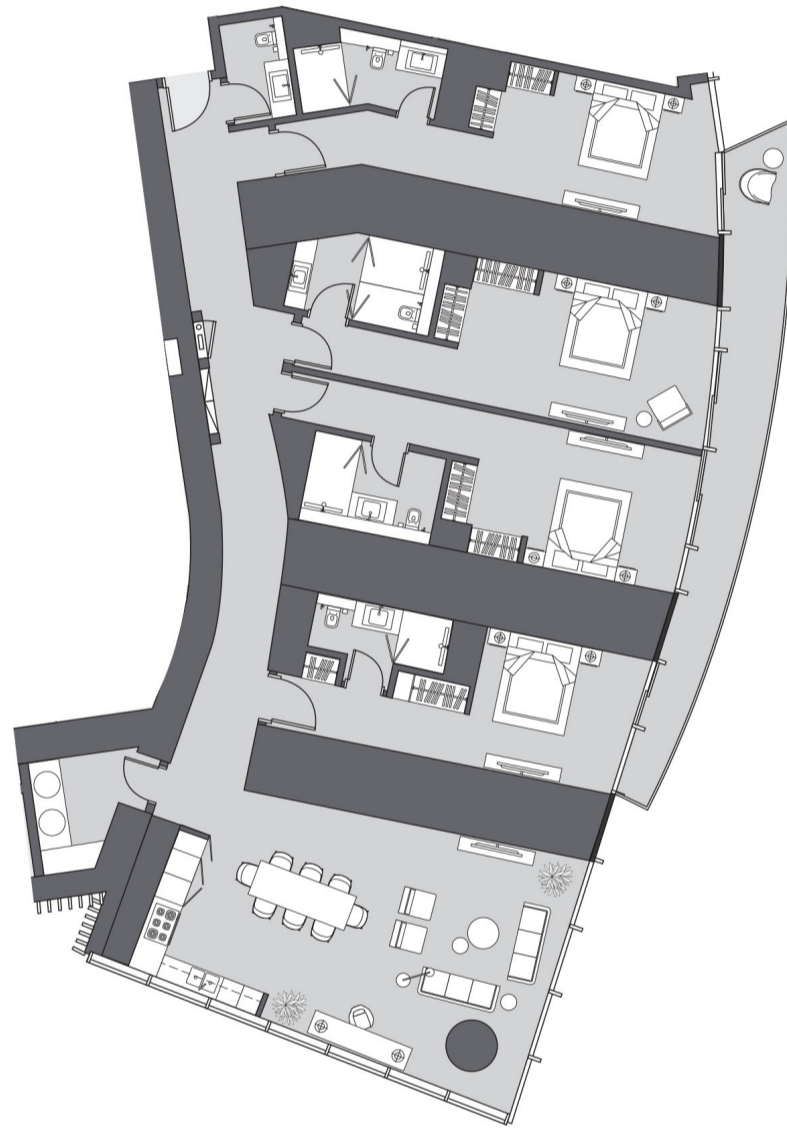


Apartment Area	286.37 m ²	3,082.46 f ²
Balcony Area	21.85 m ²	235.19 f ²
Total Area	308.22 m²	3,317.65 f²

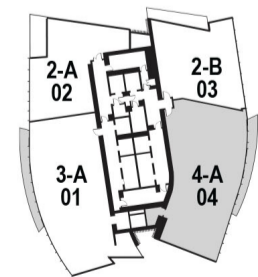
Drawings are provided by our consultants. All dimensions, features and amenities are approximate at time of printing. Actual size may vary from stated area. Drawings not to scale E & OE. The developer reserves the right to make revisions to the floor plans and any features, materials and dimensions mentioned without further notice.

A

4 Bedrooms
Type A | Unit 04
Tier 1, Levels 07 - 21



GOLF / CITY URBAN

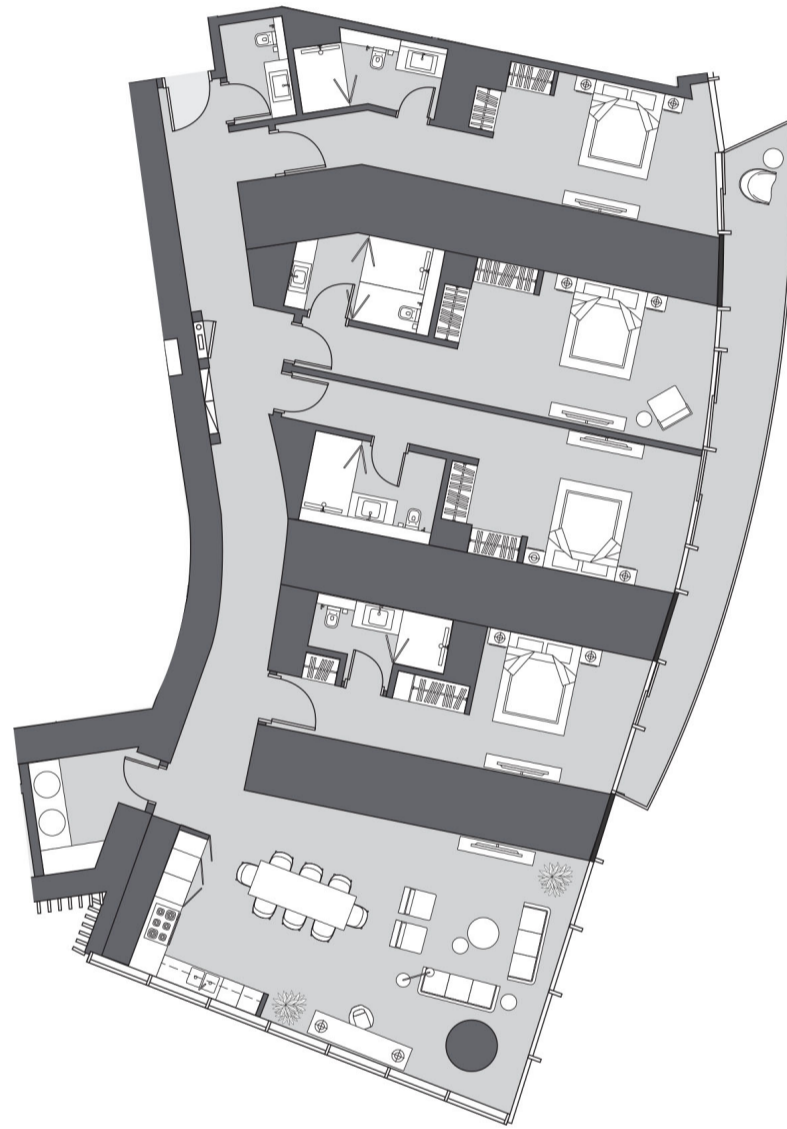


Apartment Area	286.37 m ²	3,082.46 f ²
Balcony Area	21.85 m ²	235.19 f ²
Total Area	308.22 m²	3,317.65 f²

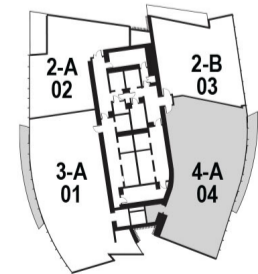
Drawings are provided by our consultants. All dimensions, features and amenities are approximate at time of printing. Actual size may vary from stated area. Drawings not to scale E & OE. The developer reserves the right to make revisions to the floor plans and any features, materials and dimensions mentioned without further notice.

A

4 Bedrooms
Type A | Unit 04
Tier 1, Levels 07 - 21



GOLF / CITY URBAN

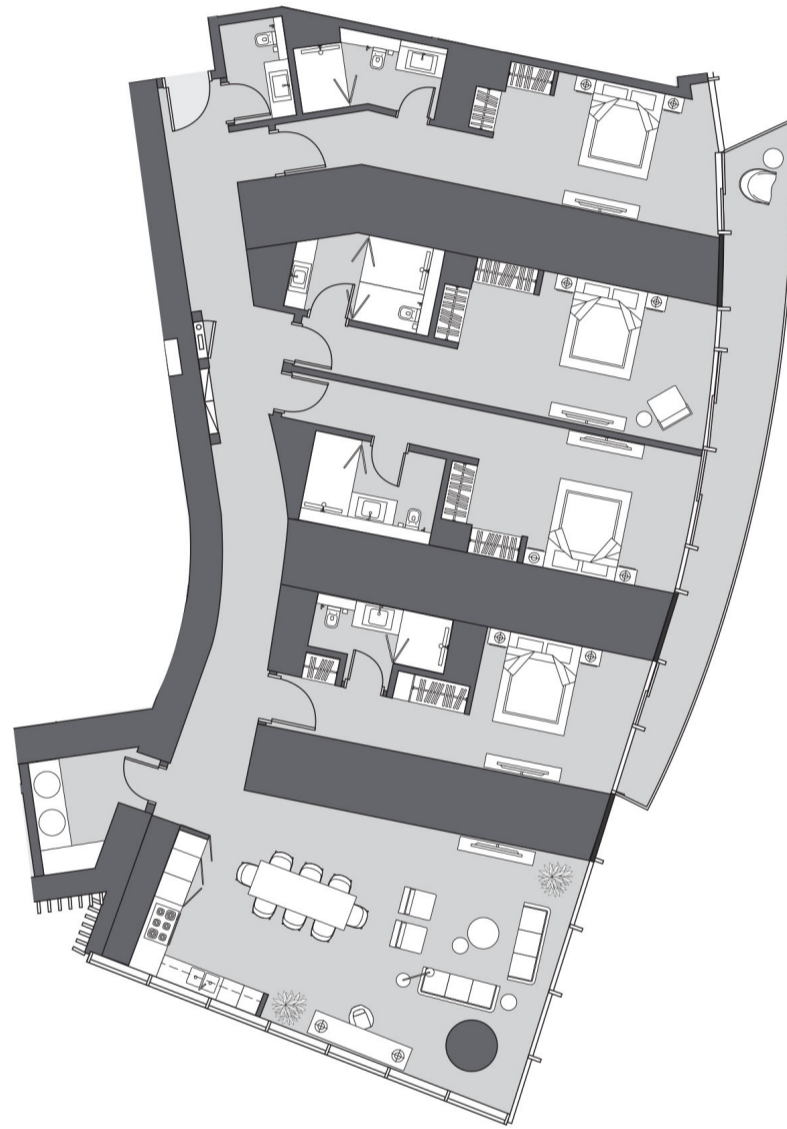


Apartment Area	286.37 m ²	3,082.46 f ²
Balcony Area	21.85 m ²	235.19 f ²
Total Area	308.22 m²	3,317.65 f²

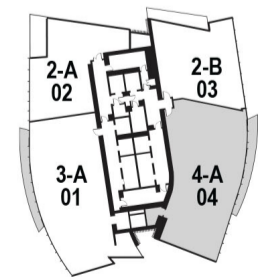
Drawings are provided by our consultants. All dimensions, features and amenities are approximate at time of printing. Actual size may vary from stated area. Drawings not to scale E & OE. The developer reserves the right to make revisions to the floor plans and any features, materials and dimensions mentioned without further notice.

A

4 Bedrooms
Type A | Unit 04
Tier 1, Levels 07 - 21



GOLF / CITY URBAN



Apartment Area	286.37 m ²	3,082.46 f ²
Balcony Area	21.85 m ²	235.19 f ²
Total Area	308.22 m²	3,317.65 f²

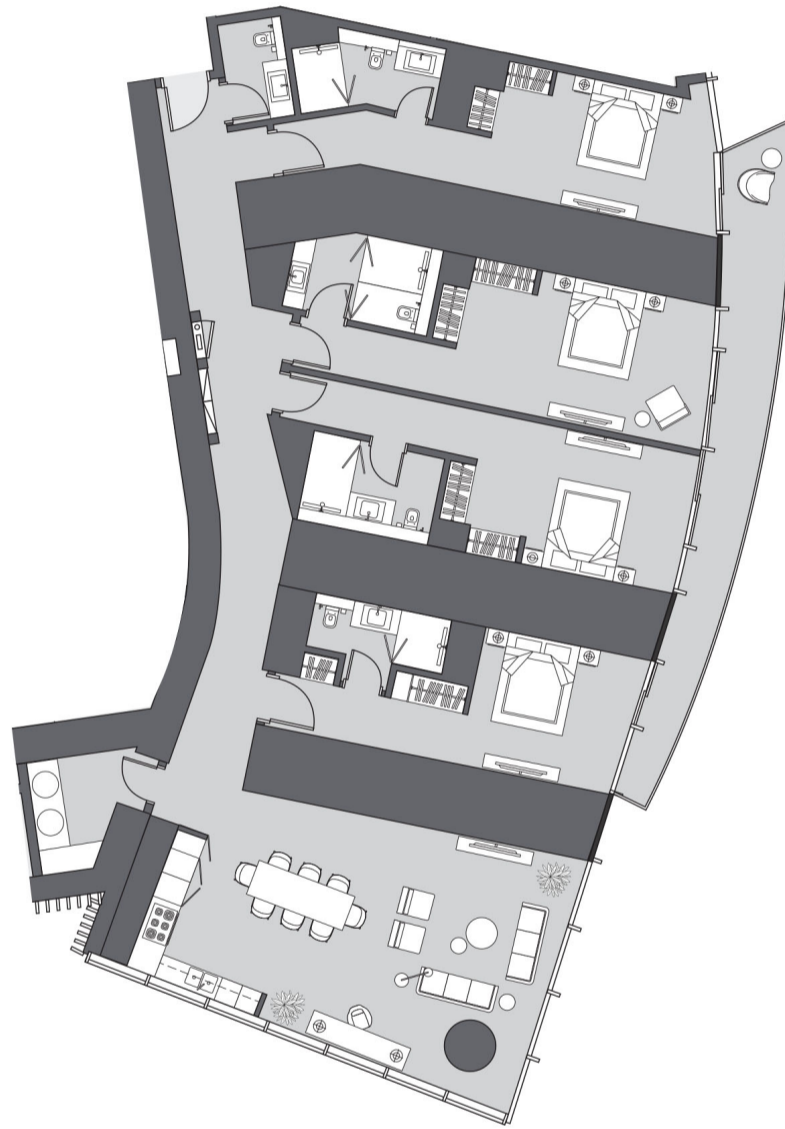
Drawings are provided by our consultants. All dimensions, features and amenities are approximate at time of printing. Actual size may vary from stated area. Drawings not to scale E & OE. The developer reserves the right to make revisions to the floor plans and any features, materials and dimensions mentioned without further notice.

A1

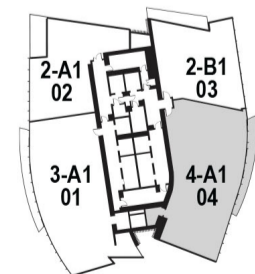
4 Bedrooms

Type A1 | Unit 04

Tier 2, Levels 24 - 38



GOLF / CITY URBAN



Apartment Area	286.84 m ²	3,087.52 f ²
Balcony Area	22.15 m ²	238.42 f ²
Total Area	308.99 m²	3,325.94 f²

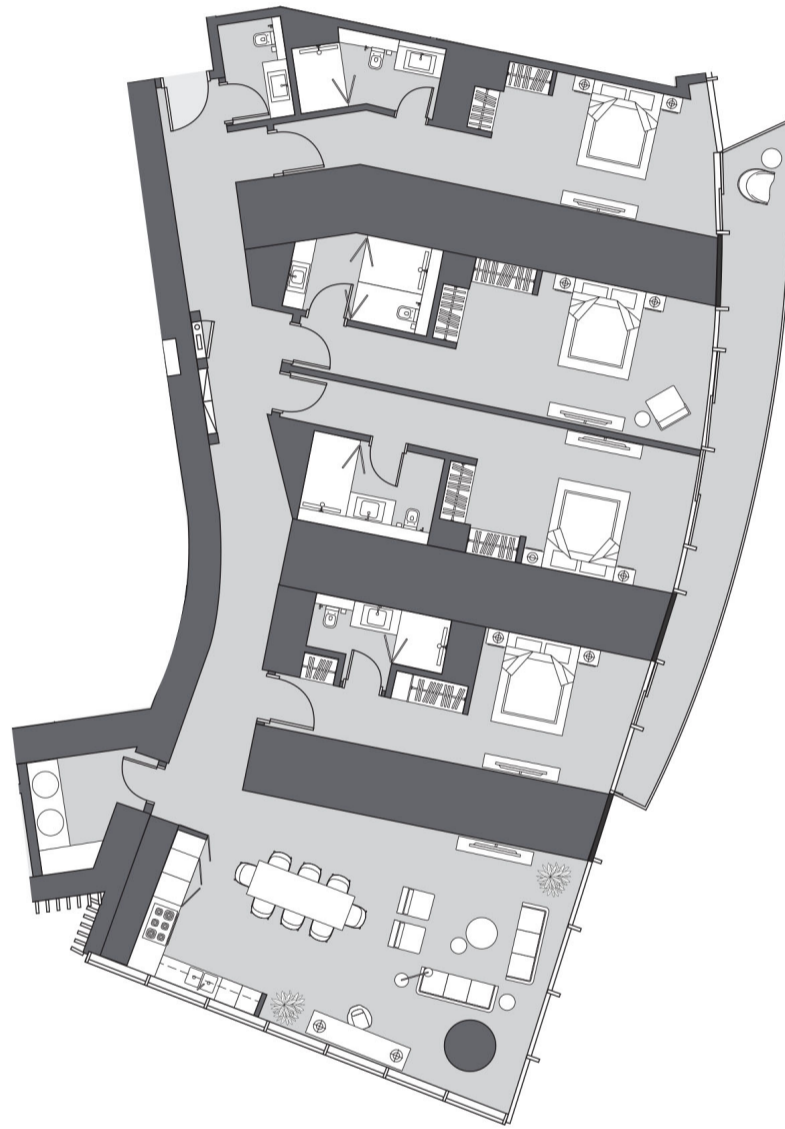
Drawings are provided by our consultants. All dimensions, features and amenities are approximate at time of printing. Actual size may vary from stated area. Drawings not to scale E & OE. The developer reserves the right to make revisions to the floor plans and any features, materials and dimensions mentioned without further notice.

A1

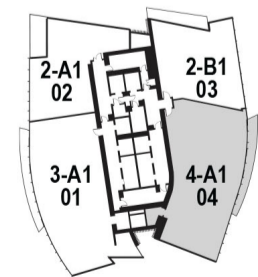
4 Bedrooms

Type A1 | Unit 04

Tier 2, Levels 24 - 38



GOLF / CITY URBAN



Apartment Area	286.84 m ²	3,087.52 f ²
Balcony Area	22.15 m ²	238.42 f ²
Total Area	308.99 m²	3,325.94 f²

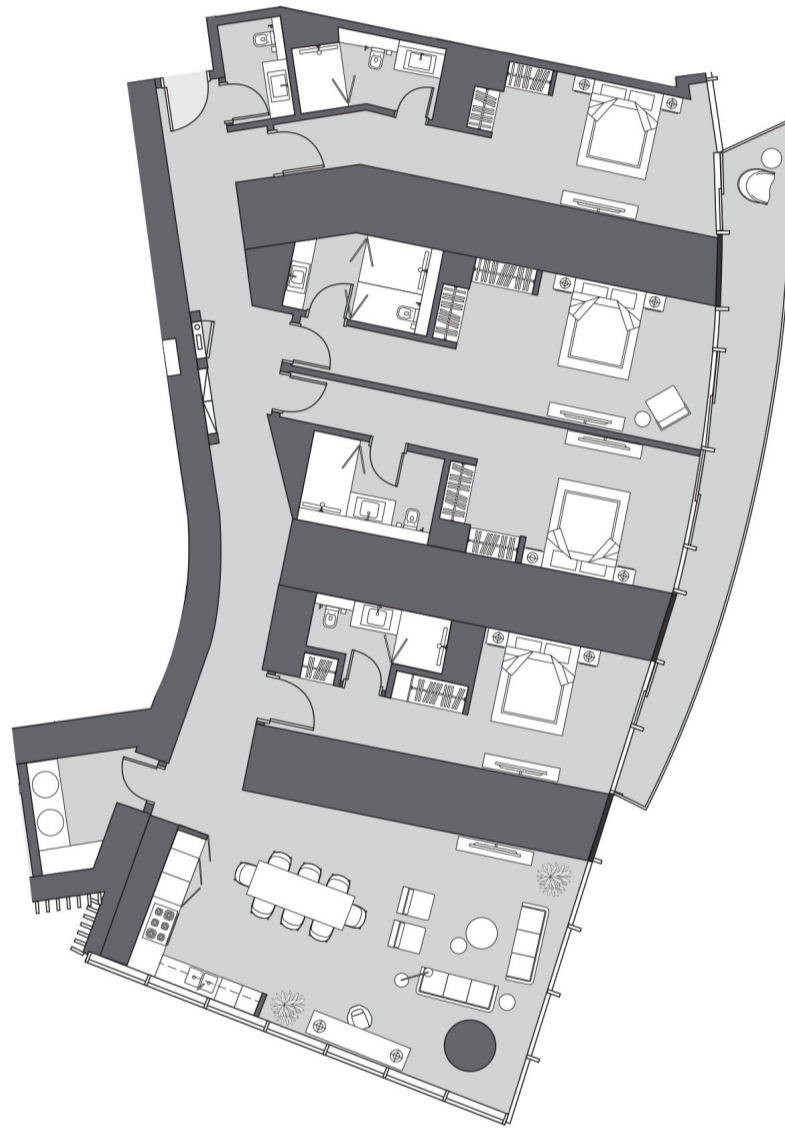
Drawings are provided by our consultants. All dimensions, features and amenities are approximate at time of printing. Actual size may vary from stated area. Drawings not to scale E & OE. The developer reserves the right to make revisions to the floor plans and any features, materials and dimensions mentioned without further notice.

A1

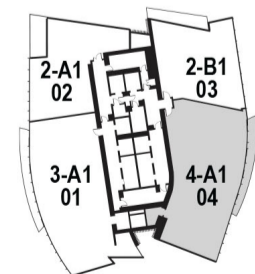
4 Bedrooms

Type A1 | Unit 04

Tier 2, Levels 24 - 38



GOLF / CITY URBAN



Apartment Area	286.84 m ²	3,087.52 f ²
Balcony Area	22.15 m ²	238.42 f ²
Total Area	308.99 m²	3,325.94 f²

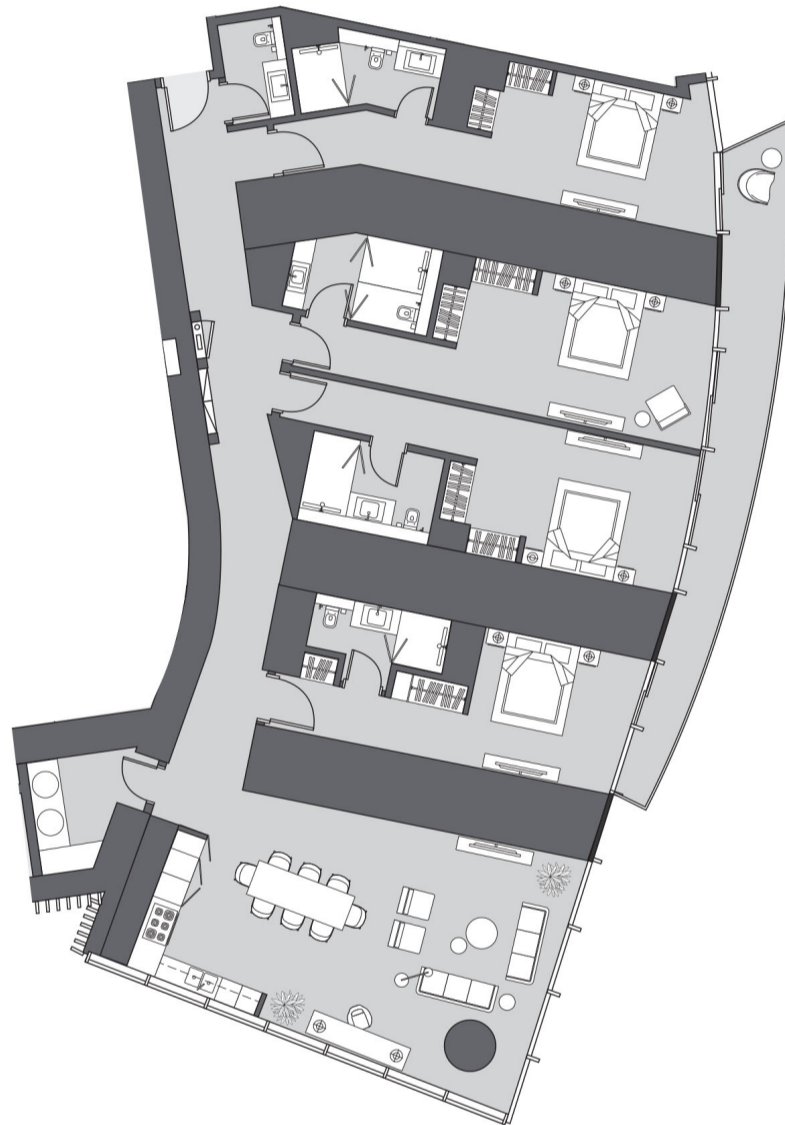
Drawings are provided by our consultants. All dimensions, features and amenities are approximate at time of printing. Actual size may vary from stated area. Drawings not to scale E & OE. The developer reserves the right to make revisions to the floor plans and any features, materials and dimensions mentioned without further notice.

A1

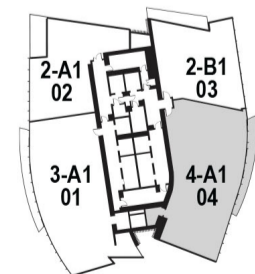
4 Bedrooms

Type A1 | Unit 04

Tier 2, Levels 24 - 38



GOLF / CITY URBAN



Apartment Area	286.84 m ²	3,087.52 f ²
Balcony Area	22.15 m ²	238.42 f ²
Total Area	308.99 m²	3,325.94 f²

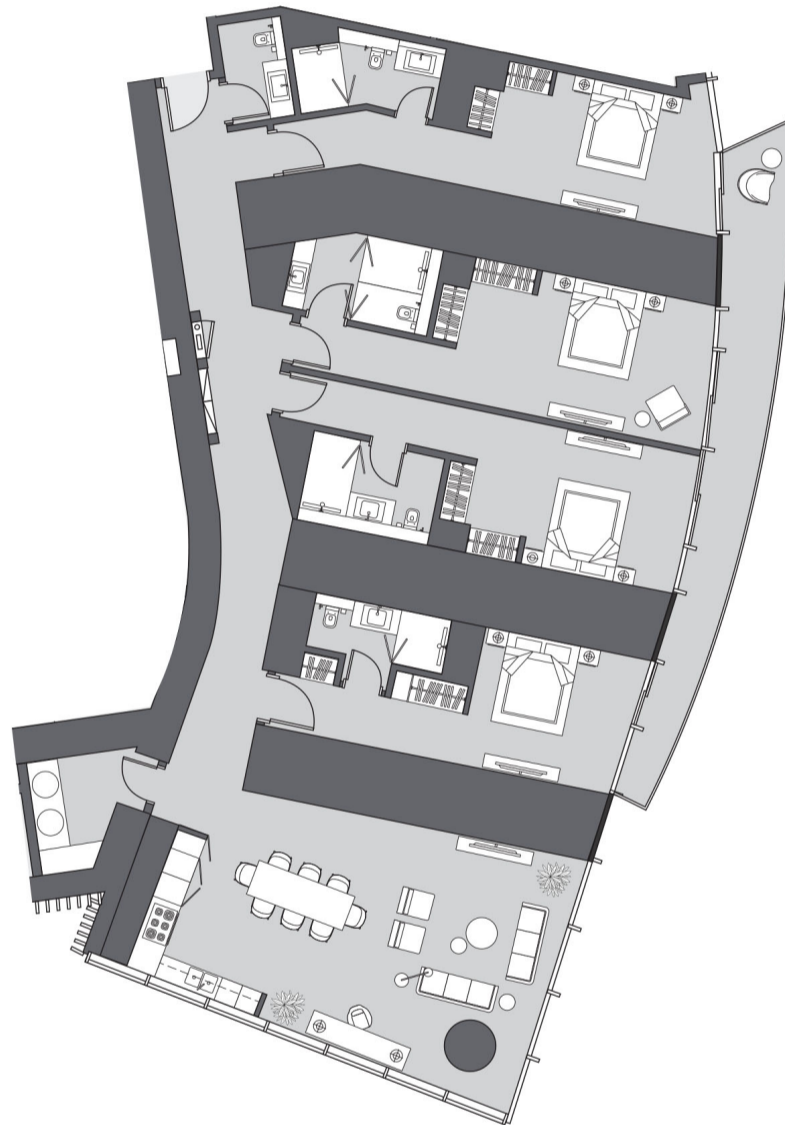
Drawings are provided by our consultants. All dimensions, features and amenities are approximate at time of printing. Actual size may vary from stated area. Drawings not to scale E & OE. The developer reserves the right to make revisions to the floor plans and any features, materials and dimensions mentioned without further notice.

A1

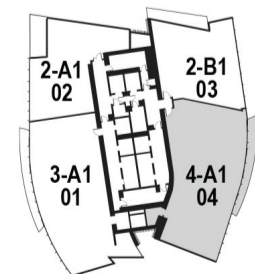
4 Bedrooms

Type A1 | Unit 04

Tier 2, Levels 24 - 38



GOLF / CITY URBAN



Apartment Area	286.84 m ²	3,087.52 f ²
Balcony Area	22.15 m ²	238.42 f ²
Total Area	308.99 m²	3,325.94 f²

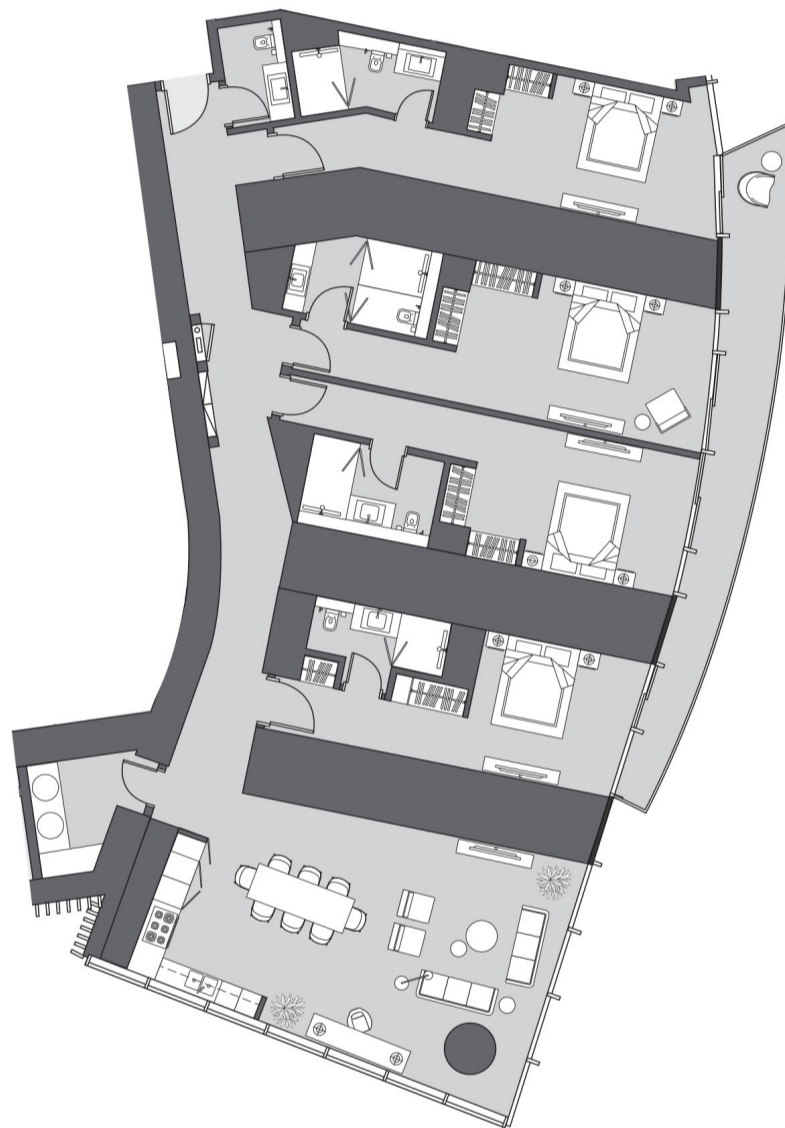
Drawings are provided by our consultants. All dimensions, features and amenities are approximate at time of printing. Actual size may vary from stated area. Drawings not to scale E & OE. The developer reserves the right to make revisions to the floor plans and any features, materials and dimensions mentioned without further notice.

A1

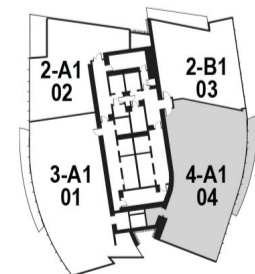
4 Bedrooms

Type A1 | Unit 04

Tier 2, Levels 24 - 38



GOLF / CITY URBAN



Apartment Area	286.84 m ²	3,087.52 f ²
Balcony Area	22.15 m ²	238.42 f ²
Total Area	308.99 m²	3,325.94 f²

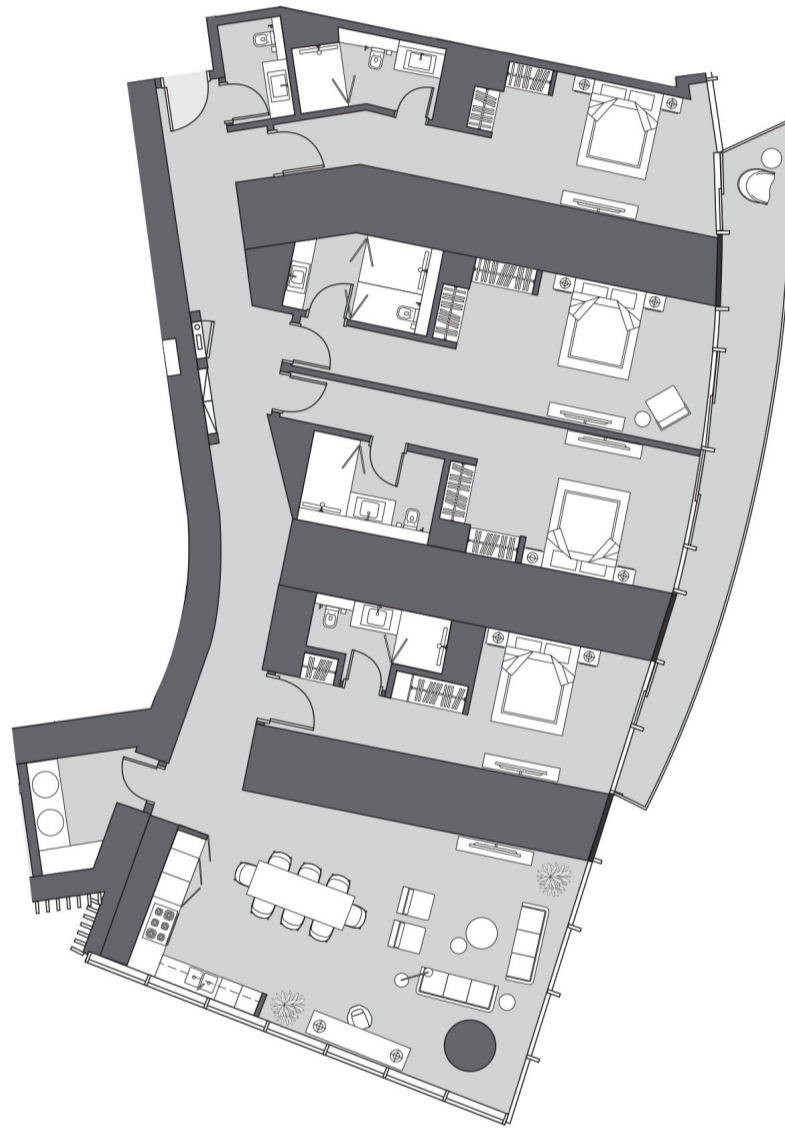
Drawings are provided by our consultants. All dimensions, features and amenities are approximate at time of printing. Actual size may vary from stated area. Drawings not to scale E & OE. The developer reserves the right to make revisions to the floor plans and any features, materials and dimensions mentioned without further notice.

A1

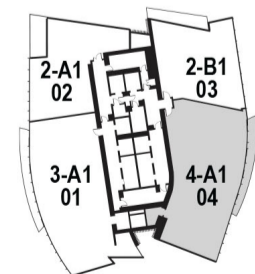
4 Bedrooms

Type A1 | Unit 04

Tier 2, Levels 24 - 38



GOLF / CITY URBAN



Apartment Area	286.84 m ²	3,087.52 f ²
Balcony Area	22.15 m ²	238.42 f ²
Total Area	308.99 m²	3,325.94 f²

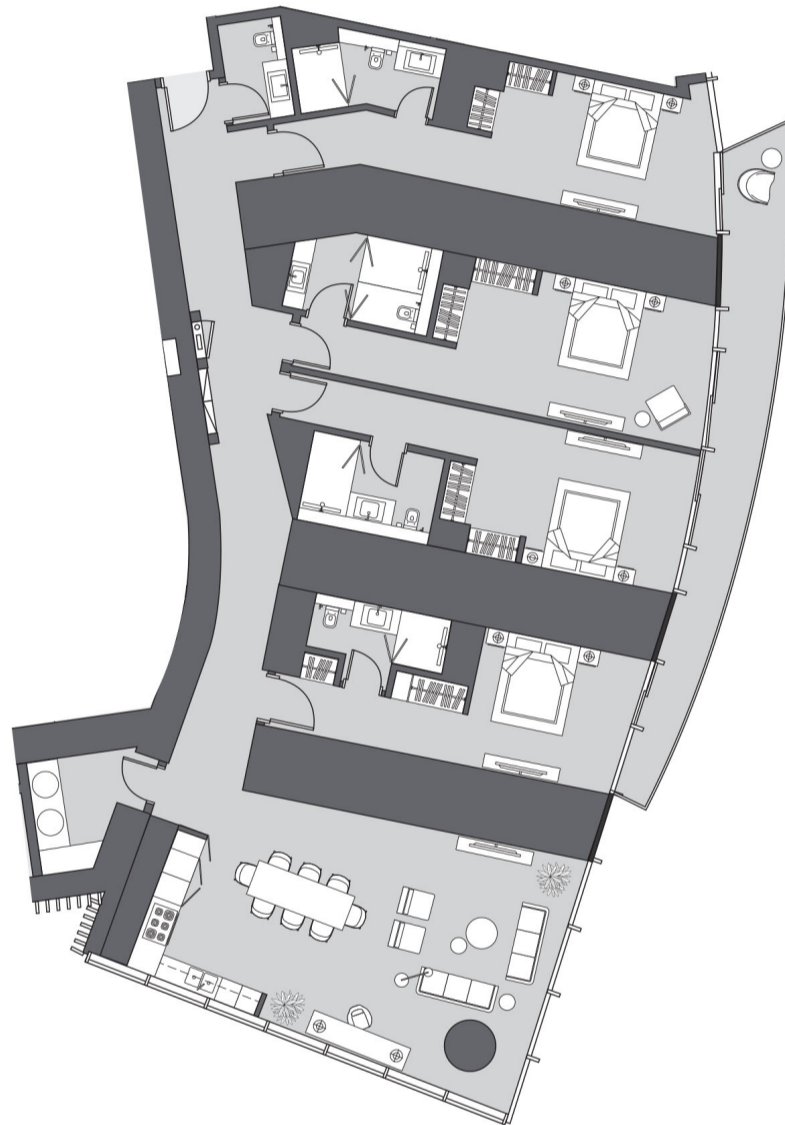
Drawings are provided by our consultants. All dimensions, features and amenities are approximate at time of printing. Actual size may vary from stated area. Drawings not to scale E & OE. The developer reserves the right to make revisions to the floor plans and any features, materials and dimensions mentioned without further notice.

A1

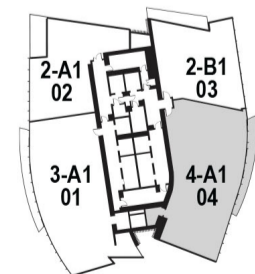
4 Bedrooms

Type A1 | Unit 04

Tier 2, Levels 24 - 38



GOLF / CITY URBAN



Apartment Area	286.84 m ²	3,087.52 f ²
Balcony Area	22.15 m ²	238.42 f ²
Total Area	308.99 m²	3,325.94 f²

Drawings are provided by our consultants. All dimensions, features and amenities are approximate at time of printing. Actual size may vary from stated area. Drawings not to scale E & OE. The developer reserves the right to make revisions to the floor plans and any features, materials and dimensions mentioned without further notice.

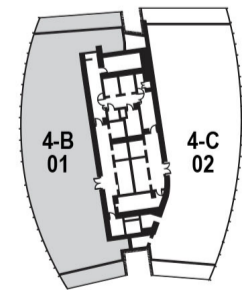
B

4 Bedrooms
Type B | Unit 01
Tier 3, Levels 41 - 61

SEA / SKYLINE / PALM



GOLF / CITY URBAN



Apartment Area	425.93 m ²	4,584.67 f ²
Balcony Area	57.97 m ²	623.98 f ²
Total Area	483.9 m²	5,208.66 f²

Drawings are provided by our consultants. All dimensions, features and amenities are approximate at time of printing. Actual size may vary from stated area. Drawings not to scale E & OE. The developer reserves the right to make revisions to the floor plans and any features, materials and dimensions mentioned without further notice.

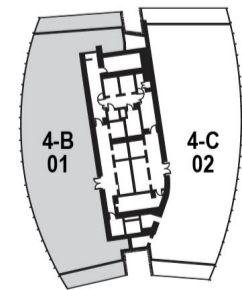
B

4 Bedrooms
Type B | Unit 01
Tier 3, Levels 41 - 61

SEA / SKYLINE / PALM



GOLF / CITY URBAN



Apartment Area	425.93 m ²	4,584.67 f ²
Balcony Area	57.97 m ²	623.98 f ²
Total Area	483.9 m²	5,208.66 f²

Drawings are provided by our consultants. All dimensions, features and amenities are approximate at time of printing. Actual size may vary from stated area. Drawings not to scale E & OE. The developer reserves the right to make revisions to the floor plans and any features, materials and dimensions mentioned without further notice.

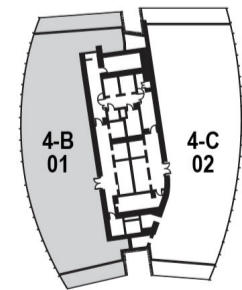
B

4 Bedrooms
Type B | Unit 01
Tier 3, Levels 41 - 61

SEA / SKYLINE / PALM



GOLF / CITY URBAN



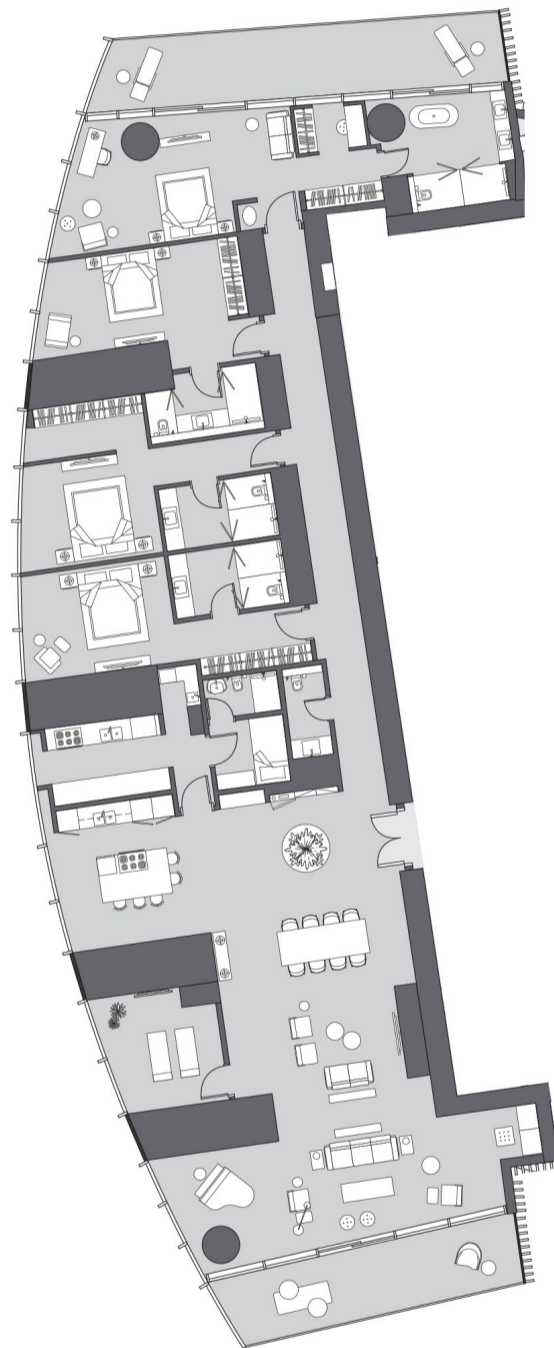
Apartment Area	425.93 m ²	4,584.67 f ²
Balcony Area	57.97 m ²	623.98 f ²
Total Area	483.9 m²	5,208.66 f²

Drawings are provided by our consultants. All dimensions, features and amenities are approximate at time of printing. Actual size may vary from stated area. Drawings not to scale E & OE. The developer reserves the right to make revisions to the floor plans and any features, materials and dimensions mentioned without further notice.

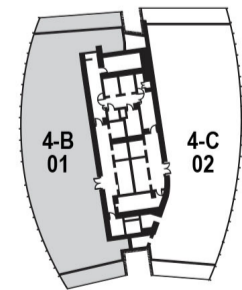
B

4 Bedrooms
Type B | Unit 01
Tier 3, Levels 41 - 61

SEA / SKYLINE / PALM



GOLF / CITY URBAN



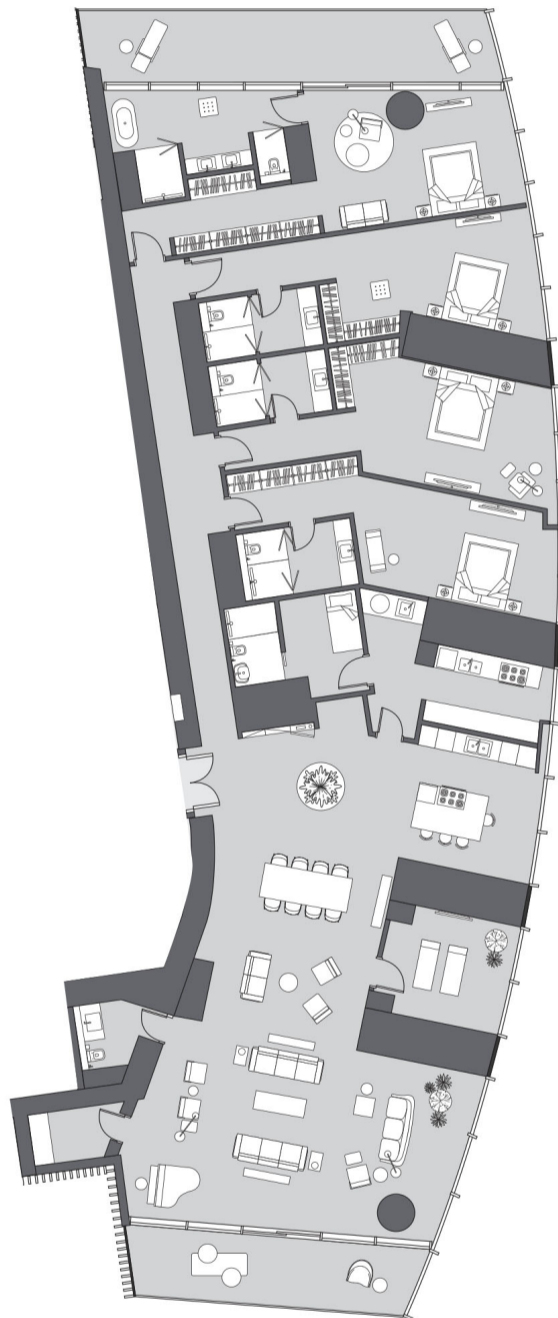
Apartment Area	425.93 m ²	4,584.67 f ²
Balcony Area	57.97 m ²	623.98 f ²
Total Area	483.9 m²	5,208.66 f²

Drawings are provided by our consultants. All dimensions, features and amenities are approximate at time of printing. Actual size may vary from stated area. Drawings not to scale E & OE. The developer reserves the right to make revisions to the floor plans and any features, materials and dimensions mentioned without further notice.

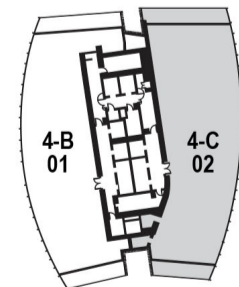
C

4 Bedrooms
Type C | Unit 02
Tier 3, Levels 41 - 61

SEA / SKYLINE / PALM



GOLF / CITY URBAN



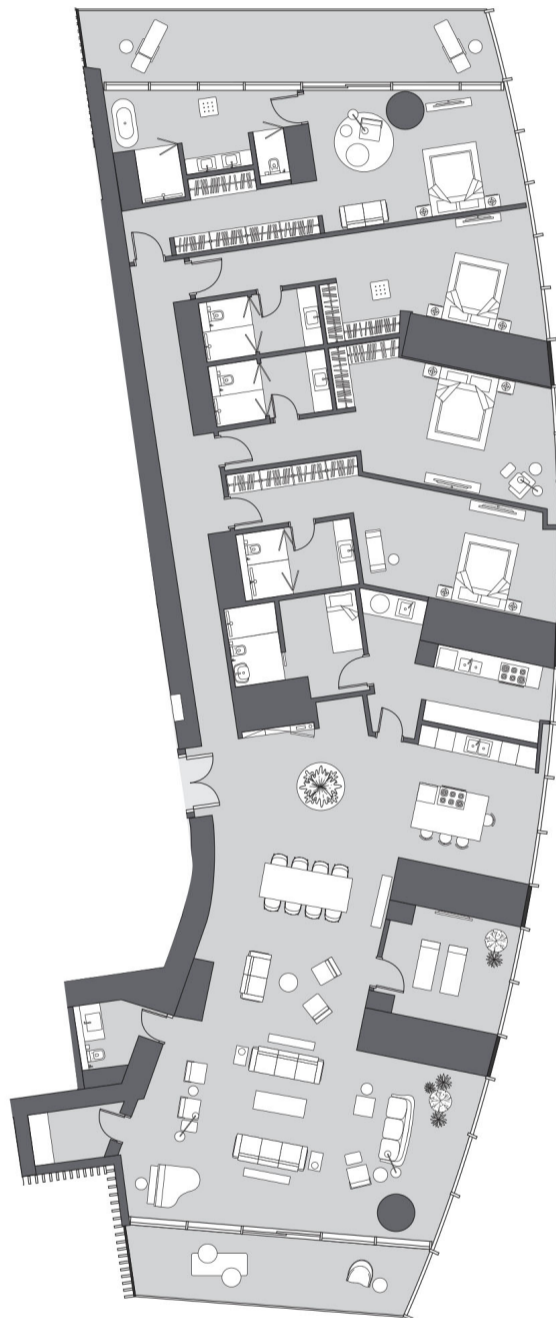
Apartment Area	478.91 m ²	5,154.94 f ²
Balcony Area	57.48 m ²	618.71 f ²
Total Area	536.39 m²	5,773.65 f²

Drawings are provided by our consultants. All dimensions, features and amenities are approximate at time of printing. Actual size may vary from stated area. Drawings not to scale E & OE. The developer reserves the right to make revisions to the floor plans and any features, materials and dimensions mentioned without further notice.

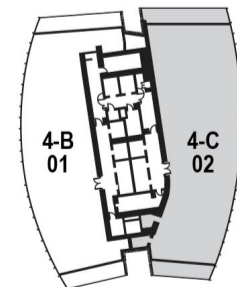
C

4 Bedrooms
Type C | Unit 02
Tier 3, Levels 41 - 61

SEA / SKYLINE / PALM



GOLF / CITY URBAN



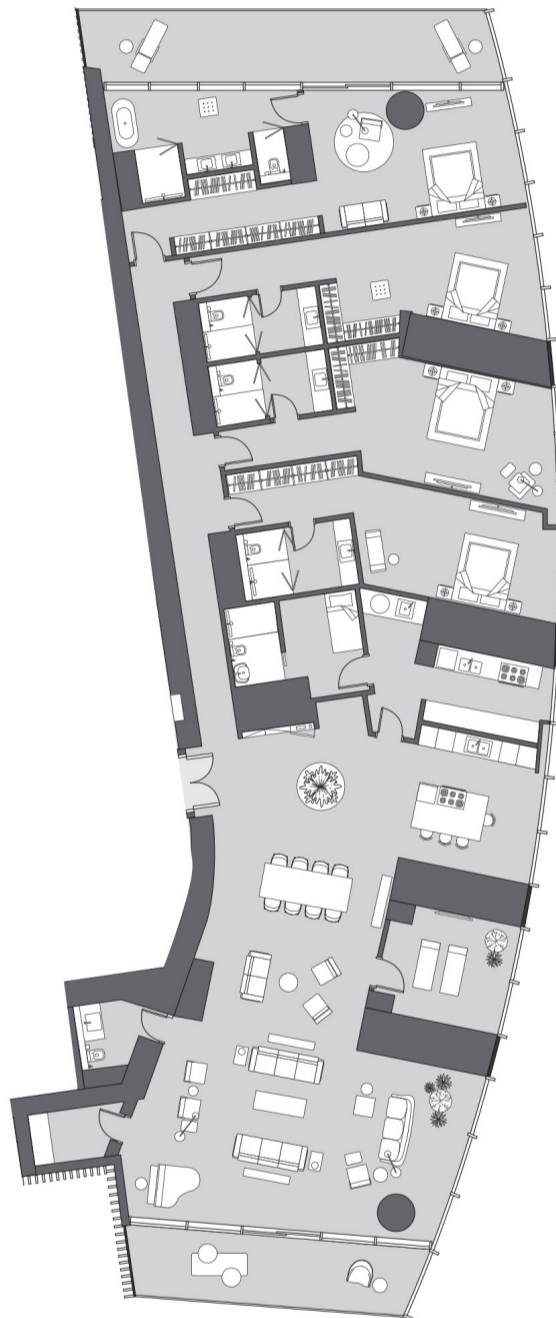
Apartment Area	478.91 m ²	5,154.94 f ²
Balcony Area	57.48 m ²	618.71 f ²
Total Area	536.39 m²	5,773.65 f²

Drawings are provided by our consultants. All dimensions, features and amenities are approximate at time of printing. Actual size may vary from stated area. Drawings not to scale E & OE. The developer reserves the right to make revisions to the floor plans and any features, materials and dimensions mentioned without further notice.

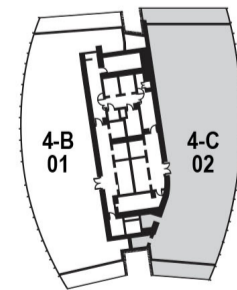
C

4 Bedrooms
Type C | Unit 02
Tier 3, Levels 41 - 61

SEA / SKYLINE / PALM



GOLF / CITY URBAN



Apartment Area	478.91 m ²	5,154.94 f ²
Balcony Area	57.48 m ²	618.71 f ²
Total Area	536.39 m²	5,773.65 f²

Drawings are provided by our consultants. All dimensions, features and amenities are approximate at time of printing. Actual size may vary from stated area. Drawings not to scale E & OE. The developer reserves the right to make revisions to the floor plans and any features, materials and dimensions mentioned without further notice.

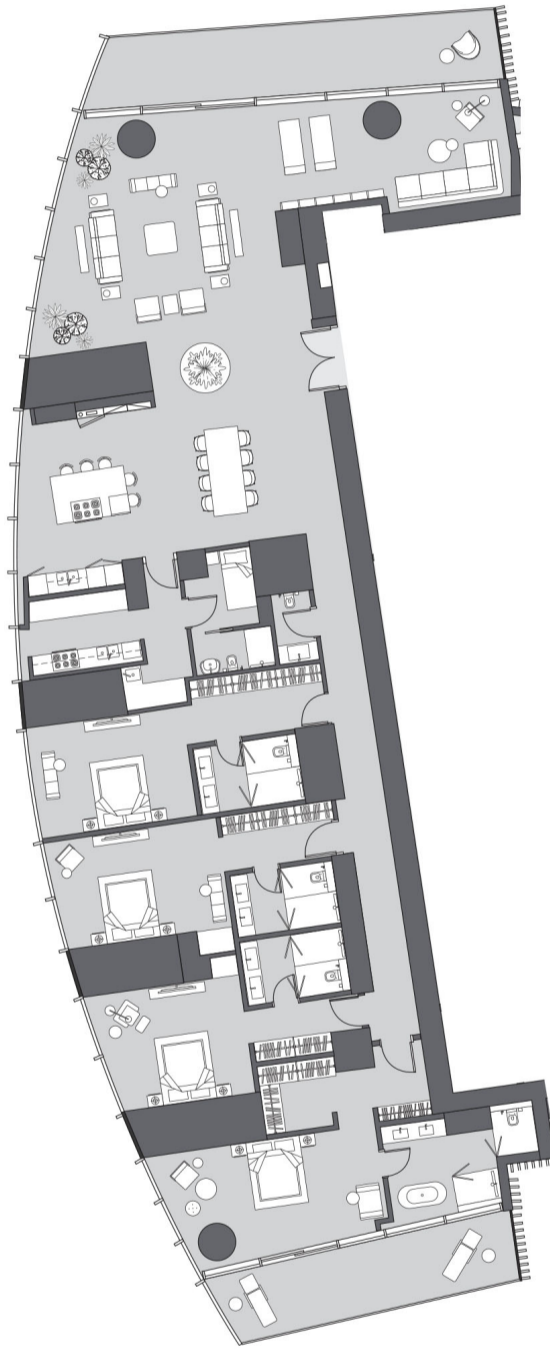
D

4 Bedrooms

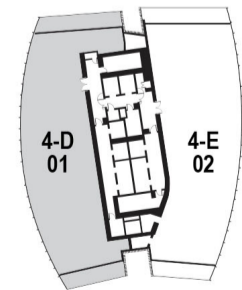
Type D | Unit 01

Tier 4, Levels 64 - 84 & Tier 5, Level 89 - 106

SEA / SKYLINE / PALM



GOLF / CITY URBAN



Apartment Area	425.93 m ²	4,584.67 f ²
Balcony Area	57.98 m ²	624.09 f ²
Total Area	483.91 m²	5,208.76 f²

Drawings are provided by our consultants. All dimensions, features and amenities are approximate at time of printing. Actual size may vary from stated area. Drawings not to scale E & OE. The developer reserves the right to make revisions to the floor plans and any features, materials and dimensions mentioned without further notice.

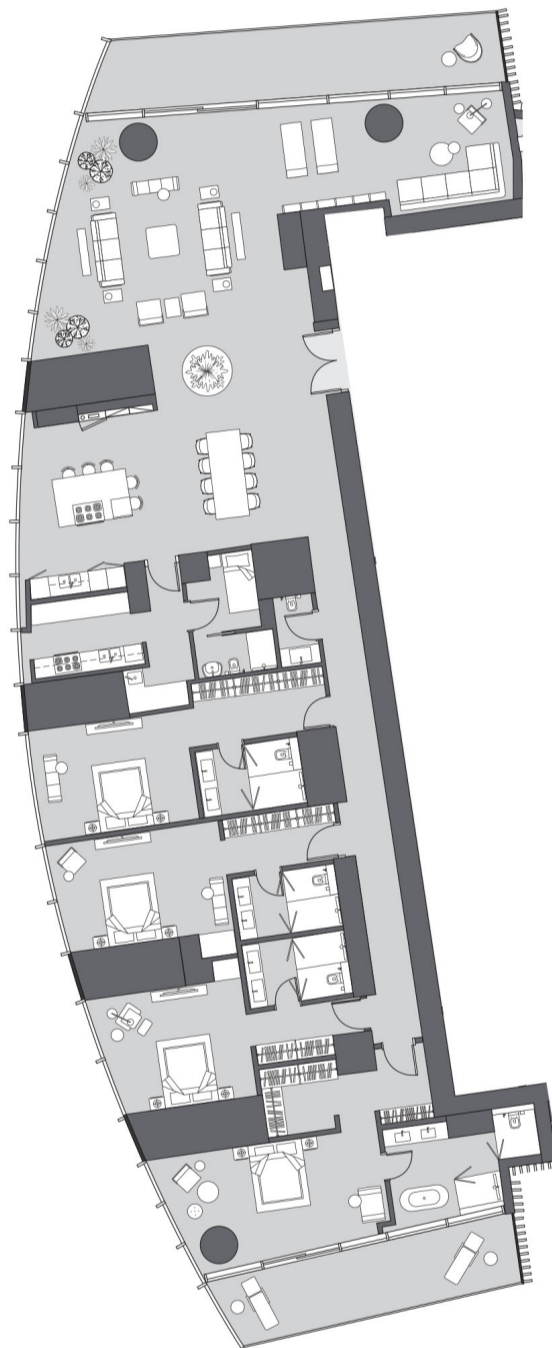
D

4 Bedrooms

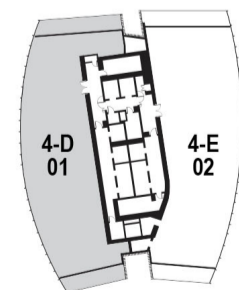
Type D | Unit 01

Tier 4, Levels 64 - 84 & Tier 5, Level 89 - 106

SEA / SKYLINE / PALM



GOLF / CITY URBAN



Apartment Area	425.93 m ²	4,584.67 f ²
Balcony Area	57.98 m ²	624.09 f ²
Total Area	483.91 m²	5,208.76 f²

Drawings are provided by our consultants. All dimensions, features and amenities are approximate at time of printing. Actual size may vary from stated area. Drawings not to scale E & OE. The developer reserves the right to make revisions to the floor plans and any features, materials and dimensions mentioned without further notice.

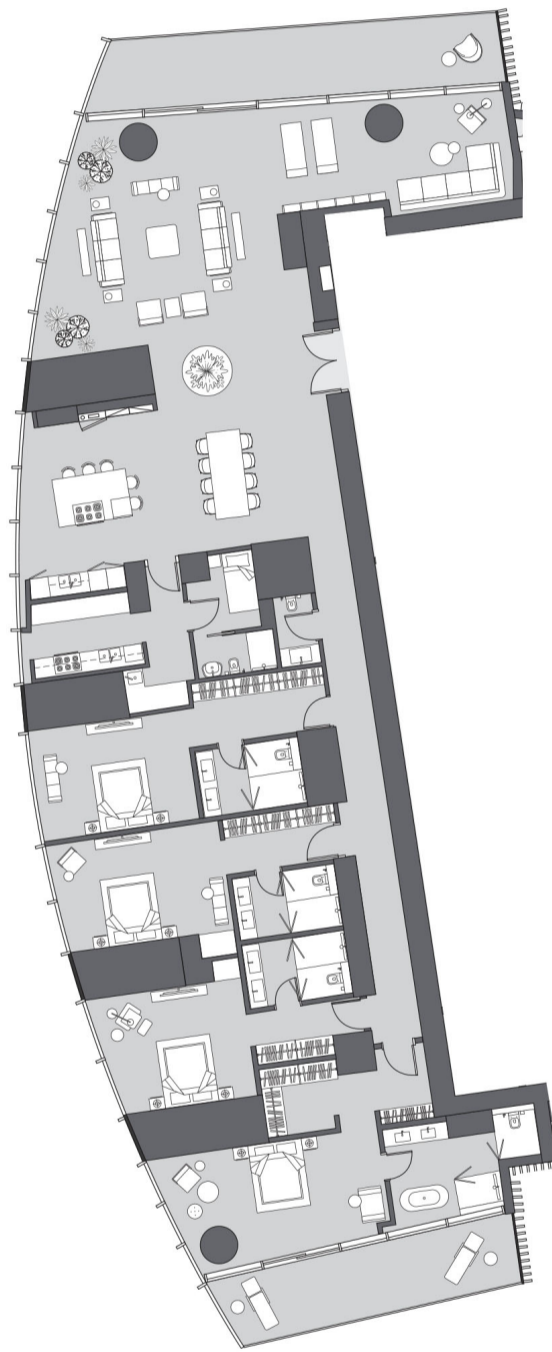
D

4 Bedrooms

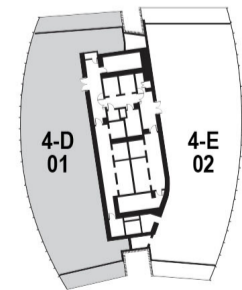
Type D | Unit 01

Tier 4, Levels 64 - 84 & Tier 5, Level 89 - 106

SEA / SKYLINE / PALM



GOLF / CITY URBAN



Apartment Area	425.93 m ²	4,584.67 f ²
Balcony Area	57.98 m ²	624.09 f ²
Total Area	483.91 m²	5,208.76 f²

Drawings are provided by our consultants. All dimensions, features and amenities are approximate at time of printing. Actual size may vary from stated area. Drawings not to scale E & OE. The developer reserves the right to make revisions to the floor plans and any features, materials and dimensions mentioned without further notice.

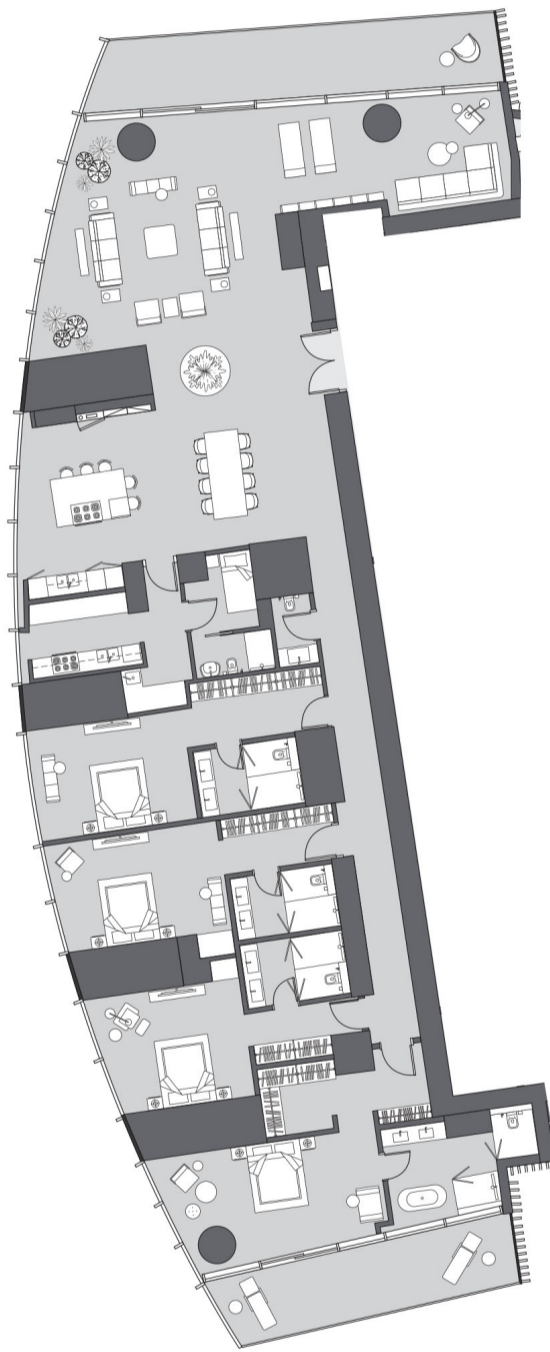
D

4 Bedrooms

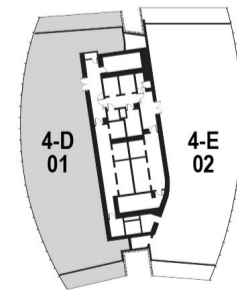
Type D | Unit 01

Tier 4, Levels 64 - 84 & Tier 5, Level 89 - 106

SEA / SKYLINE / PALM



GOLF / CITY URBAN



Apartment Area	425.93 m ²	4,584.67 f ²
Balcony Area	57.98 m ²	624.09 f ²
Total Area	483.91 m²	5,208.76 f²

Drawings are provided by our consultants. All dimensions, features and amenities are approximate at time of printing. Actual size may vary from stated area. Drawings not to scale E & OE. The developer reserves the right to make revisions to the floor plans and any features, materials and dimensions mentioned without further notice.

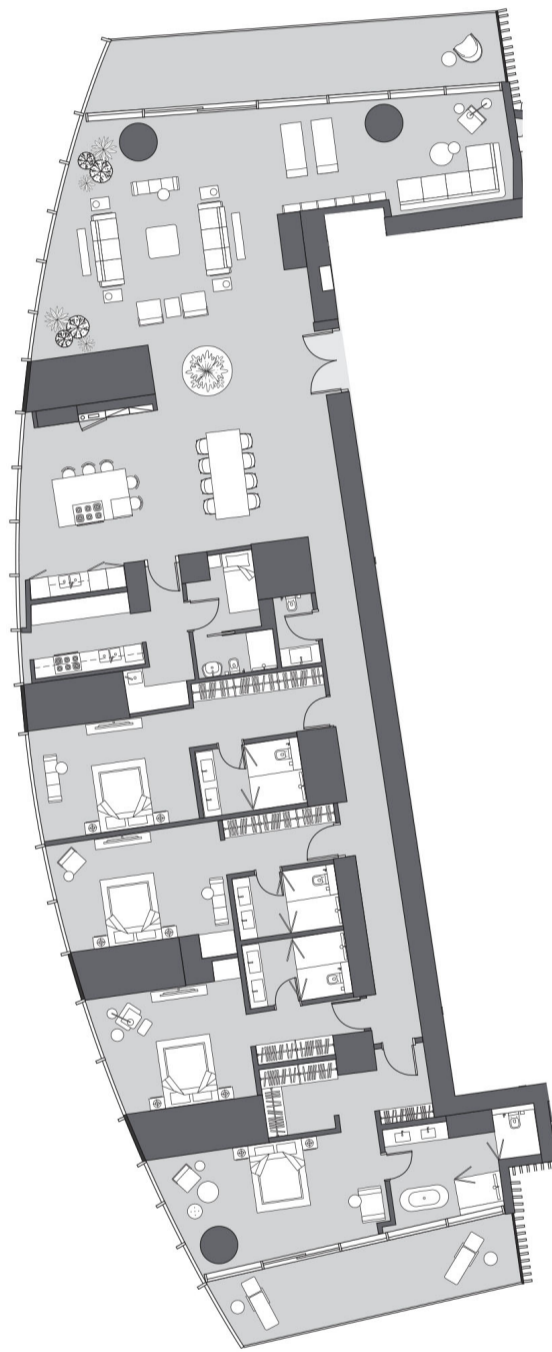
D

4 Bedrooms

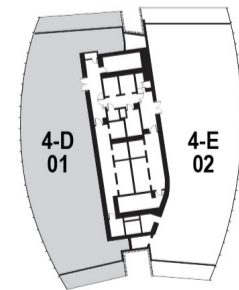
Type D | Unit 01

Tier 4, Levels 64 - 84 & Tier 5, Level 89 - 106

SEA / SKYLINE / PALM



GOLF / CITY URBAN



Apartment Area	425.93 m ²	4,584.67 f ²
Balcony Area	57.98 m ²	624.09 f ²
Total Area	483.91 m²	5,208.76 f²

Drawings are provided by our consultants. All dimensions, features and amenities are approximate at time of printing. Actual size may vary from stated area. Drawings not to scale E & OE. The developer reserves the right to make revisions to the floor plans and any features, materials and dimensions mentioned without further notice.

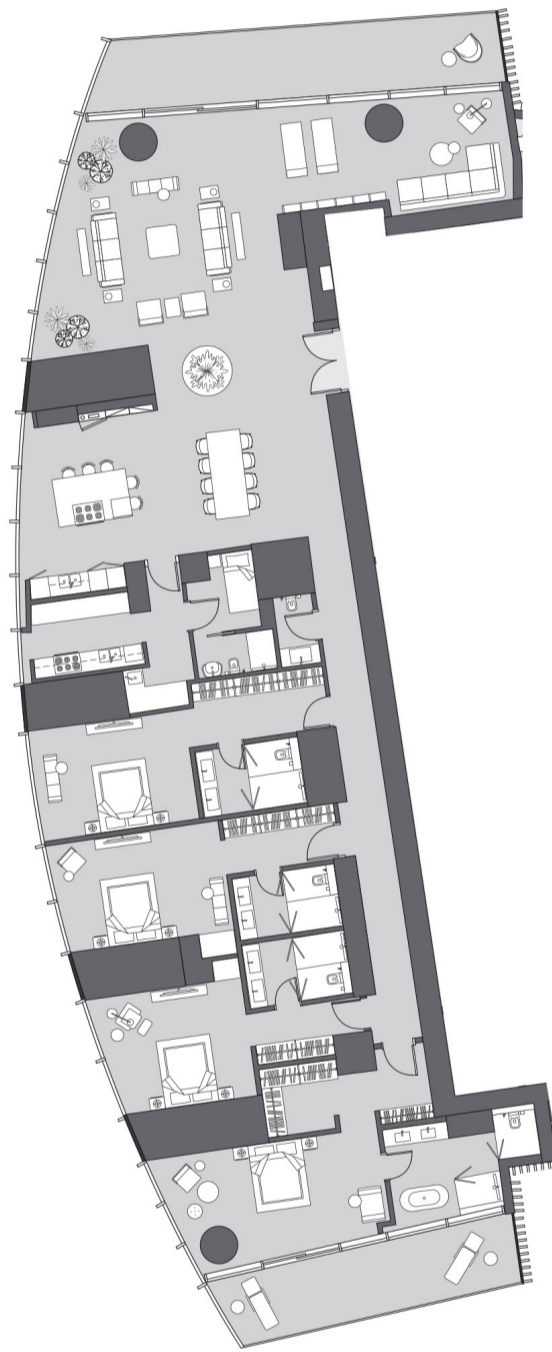
D

4 Bedrooms

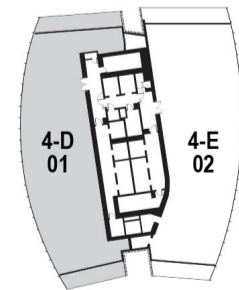
Type D | Unit 01

Tier 4, Levels 64 - 84 & Tier 5, Level 89 - 106

SEA / SKYLINE / PALM



GOLF / CITY URBAN



Apartment Area	425.93 m ²	4,584.67 f ²
Balcony Area	57.98 m ²	624.09 f ²
Total Area	483.91 m²	5,208.76 f²

Drawings are provided by our consultants. All dimensions, features and amenities are approximate at time of printing. Actual size may vary from stated area. Drawings not to scale E & OE. The developer reserves the right to make revisions to the floor plans and any features, materials and dimensions mentioned without further notice.

Duplex A1

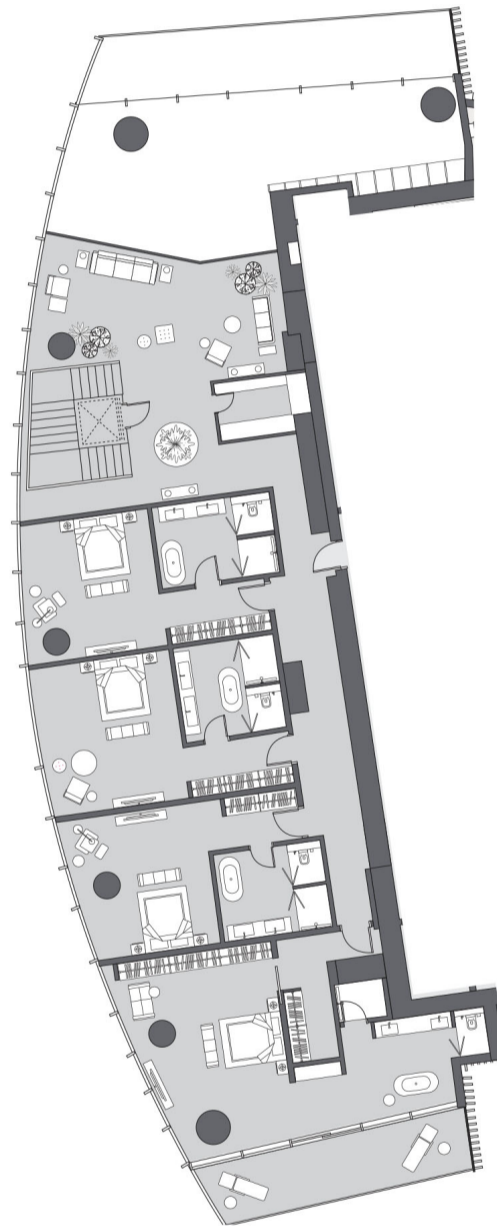
4 Bedrooms
Duplex A1 | Unit 01
Levels 113 - 114

SEA / SKYLINE / PALM

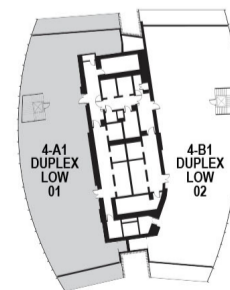
Lower Level 113



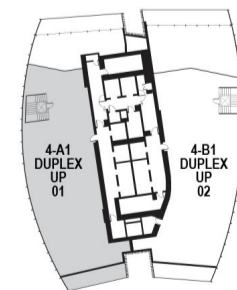
Upper Level 114



GOLF / CITY URBAN



Lower Level 113



Upper Level 114

Apartment Area	785.41 m ²	8,454.08 f ²
Balcony Area	80.73 m ²	868.97 f ²
Total Area	866.14 m²	9,323.05 f²

Drawings are provided by our consultants. All dimensions, features and amenities are approximate at time of printing. Actual size may vary from stated area. Drawings not to scale E & OE. The developer reserves the right to make revisions to the floor plans and any features, materials and dimensions mentioned without further notice.

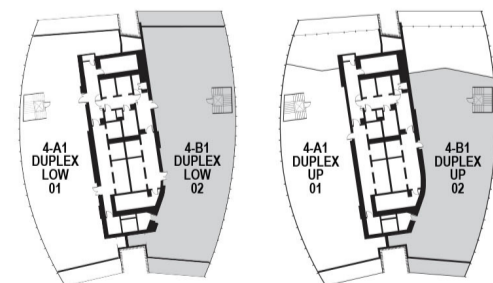
Duplex B1

4 Bedrooms
Duplex B1 | Unit 02
Levels 113 - 114

SEA / SKYLINE / PALM



GOLF / CITY URBAN



Lower Level 113

Upper Level 114

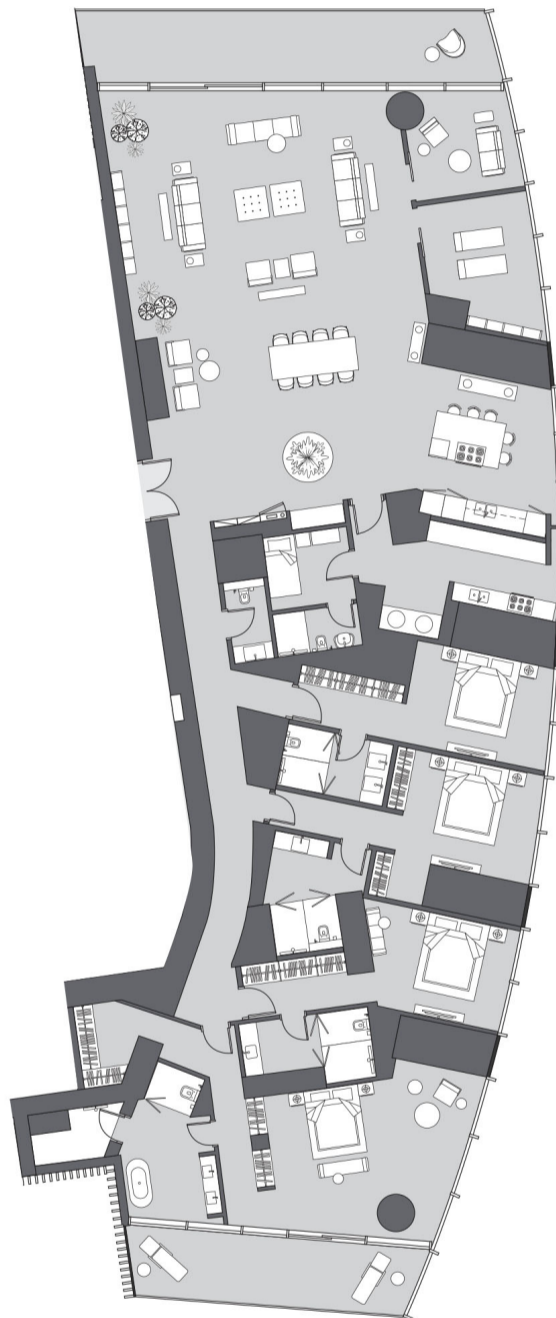
Apartment Area	857.07 m ²	9,225.42 f ²
Balcony Area	77.95 m ²	839.05 f ²
Total Area	935.02 m²	10,064.47 f²

Drawings are provided by our consultants. All dimensions, features and amenities are approximate at time of printing. Actual size may vary from stated area. Drawings not to scale E & OE. The developer reserves the right to make revisions to the floor plans and any features, materials and dimensions mentioned without further notice.

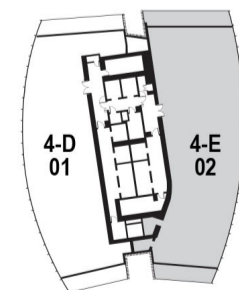
E

4 Bedrooms
Type E | Unit 02
Tier 4, Levels 64 - 84 & Tier 5, Level 89 - 106

SEA / SKYLINE / PALM



GOLF / CITY URBAN



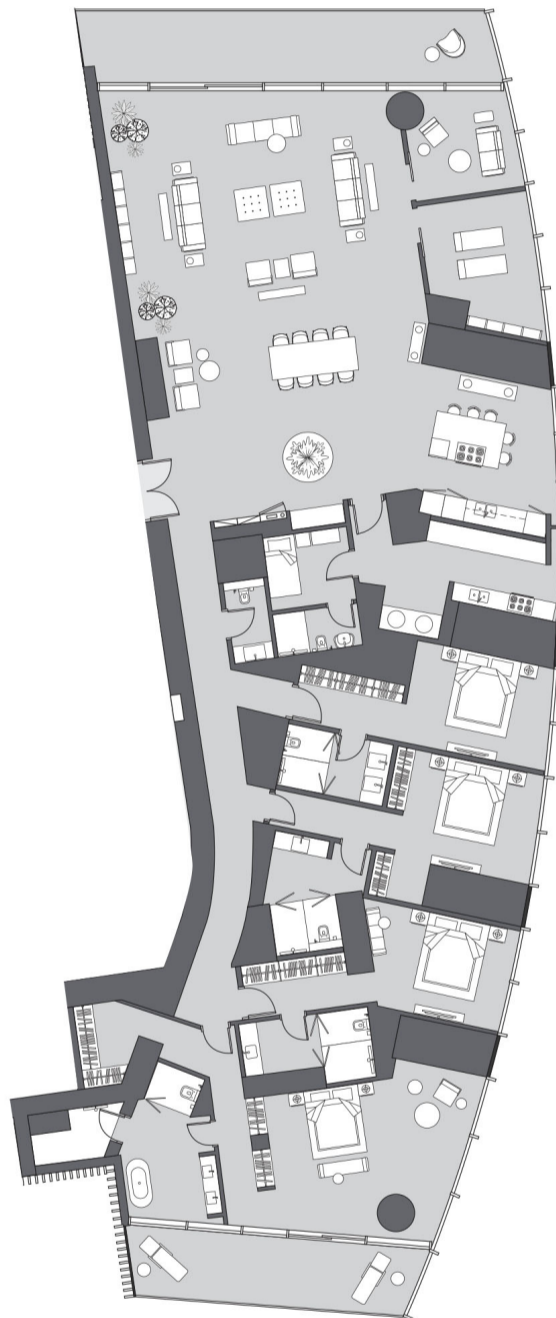
Apartment Area	473.28 m ²	5,094.34 f ²
Balcony Area	57.47 m ²	618.6 f ²
Total Area	530.75 m²	5,712.95 f²

Drawings are provided by our consultants. All dimensions, features and amenities are approximate at time of printing. Actual size may vary from stated area. Drawings not to scale E & OE. The developer reserves the right to make revisions to the floor plans and any features, materials and dimensions mentioned without further notice.

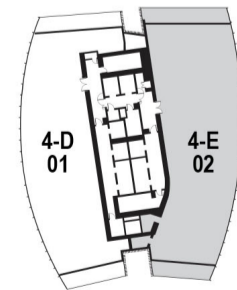
E

4 Bedrooms
Type E | Unit 02
Tier 4, Levels 64 - 84 & Tier 5, Level 89 - 106

SEA / SKYLINE / PALM



GOLF / CITY URBAN



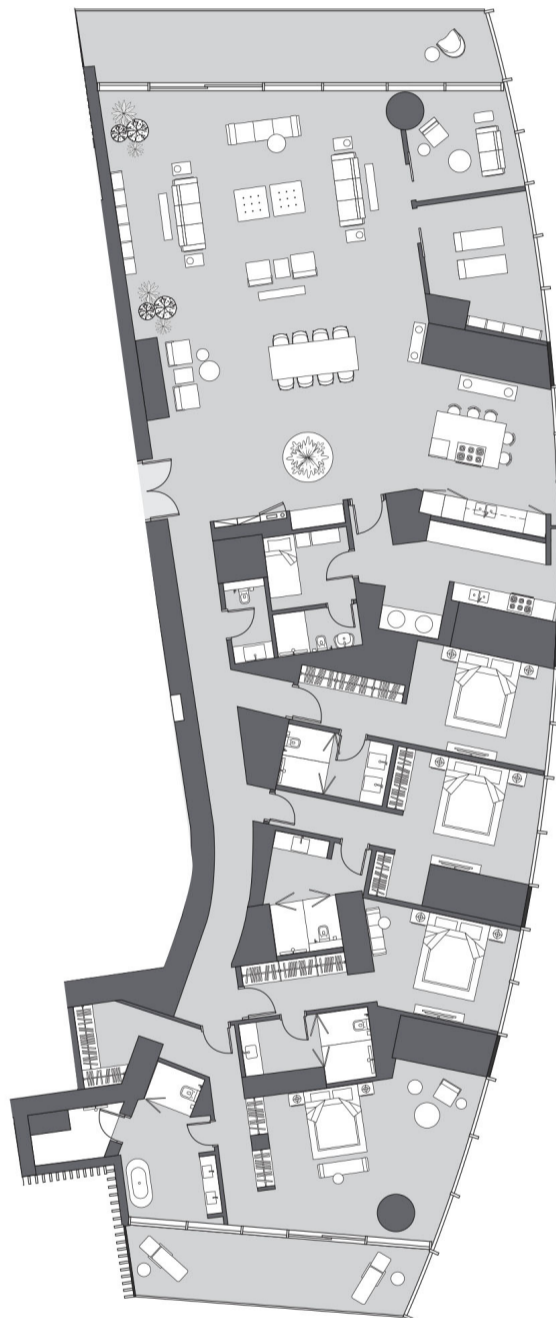
Apartment Area	473.28 m ²	5,094.34 f ²
Balcony Area	57.47 m ²	618.6 f ²
Total Area	530.75 m²	5,712.95 f²

Drawings are provided by our consultants. All dimensions, features and amenities are approximate at time of printing. Actual size may vary from stated area. Drawings not to scale E & OE. The developer reserves the right to make revisions to the floor plans and any features, materials and dimensions mentioned without further notice.

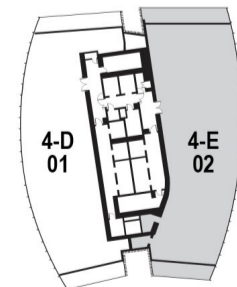
E

4 Bedrooms
Type E | Unit 02
Tier 4, Levels 64 - 84 & Tier 5, Level 89 - 106

SEA / SKYLINE / PALM



GOLF / CITY URBAN



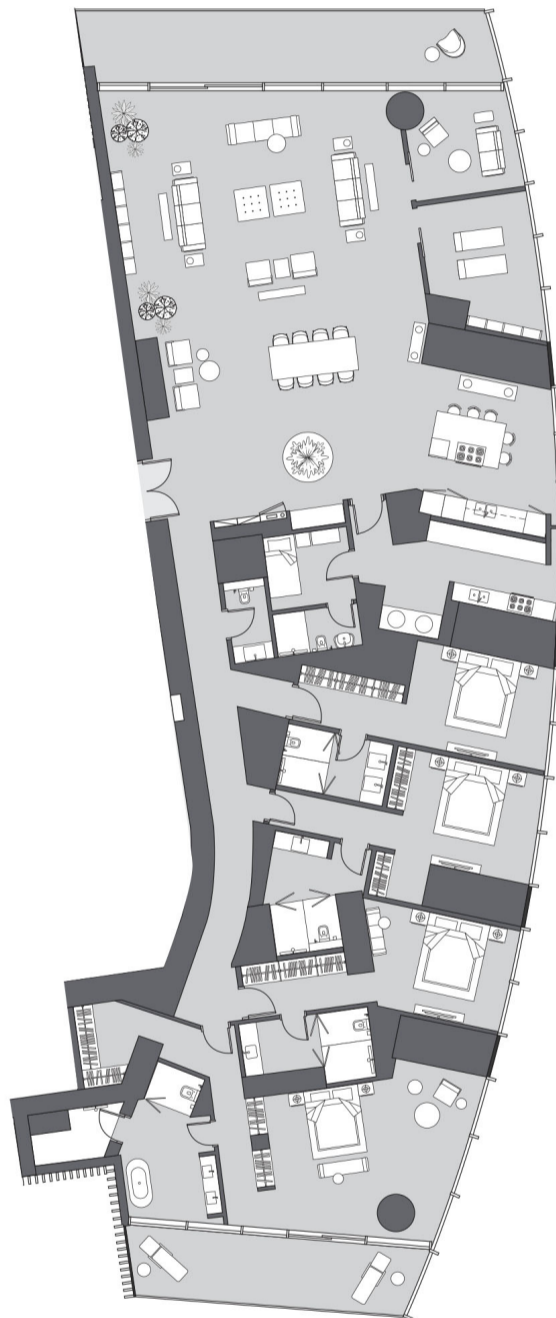
Apartment Area	473.28 m ²	5,094.34 f ²
Balcony Area	57.47 m ²	618.6 f ²
Total Area	530.75 m²	5,712.95 f²

Drawings are provided by our consultants. All dimensions, features and amenities are approximate at time of printing. Actual size may vary from stated area. Drawings not to scale E & OE. The developer reserves the right to make revisions to the floor plans and any features, materials and dimensions mentioned without further notice.

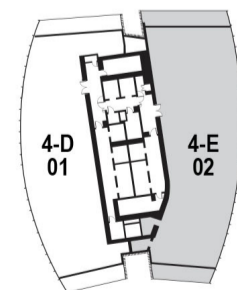
E

4 Bedrooms
Type E | Unit 02
Tier 4, Levels 64 - 84 & Tier 5, Level 89 - 106

SEA / SKYLINE / PALM



GOLF / CITY URBAN



Apartment Area	473.28 m ²	5,094.34 f ²
Balcony Area	57.47 m ²	618.6 f ²
Total Area	530.75 m²	5,712.95 f²

Drawings are provided by our consultants. All dimensions, features and amenities are approximate at time of printing. Actual size may vary from stated area. Drawings not to scale E & OE. The developer reserves the right to make revisions to the floor plans and any features, materials and dimensions mentioned without further notice.

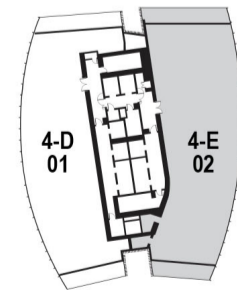
E

4 Bedrooms
Type E | Unit 02
Tier 4, Levels 64 - 84 & Tier 5, Level 89 - 106

SEA / SKYLINE / PALM



GOLF / CITY URBAN



Apartment Area	473.28 m ²	5,094.34 f ²
Balcony Area	57.47 m ²	618.6 f ²
Total Area	530.75 m²	5,712.95 f²

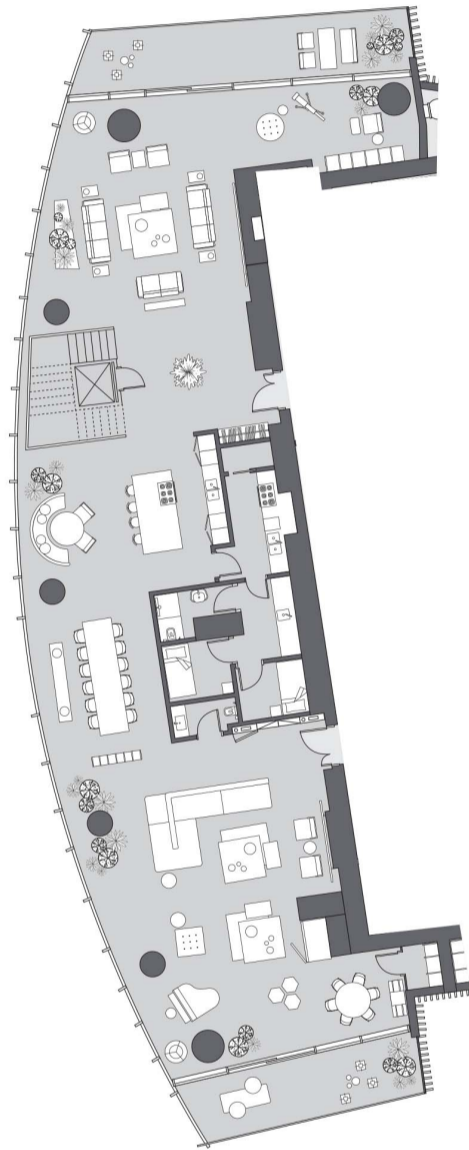
Drawings are provided by our consultants. All dimensions, features and amenities are approximate at time of printing. Actual size may vary from stated area. Drawings not to scale E & OE. The developer reserves the right to make revisions to the floor plans and any features, materials and dimensions mentioned without further notice.

Triplex A1

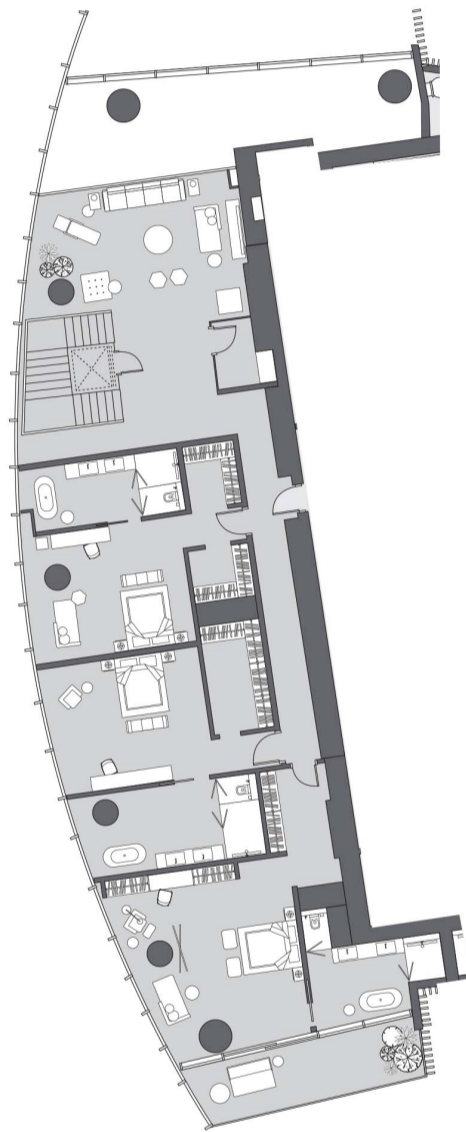
5 Bedrooms
Triplex A | Unit 01
Levels 117 - 119

SEA / SKYLINE / PALM

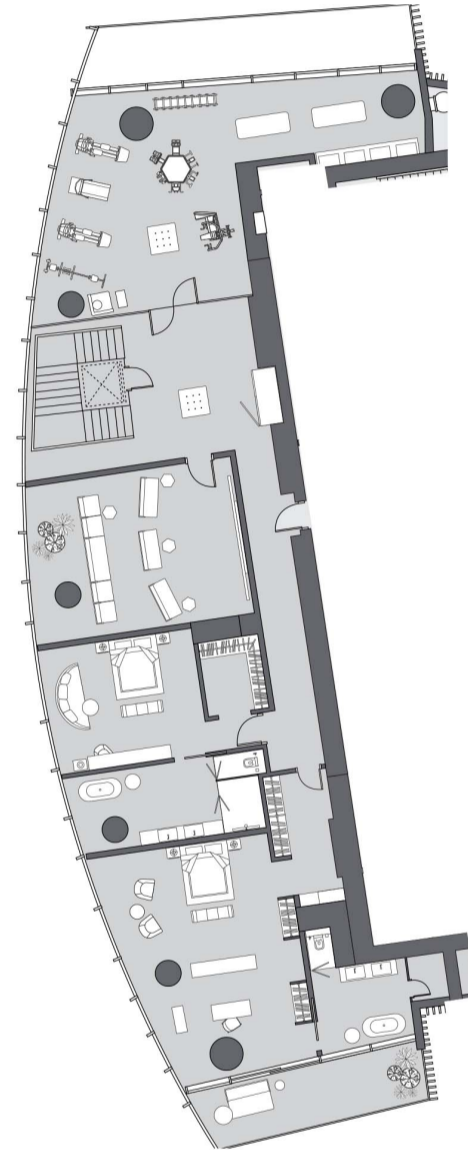
Lower Level 117



Mid Level 118



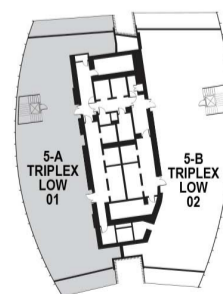
Upper Level 119



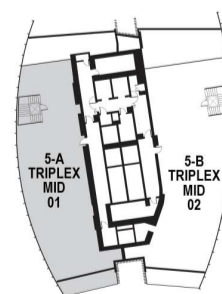
GOLF / CITY URBAN



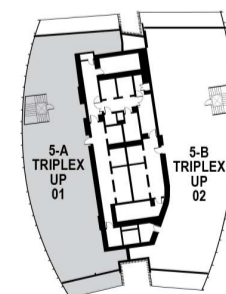
Apartment Area	1,075.66 m ²	11,578.31 f ²
Balcony Area	99.03 m ²	1,065.95 f ²
Total Area	1,174.69 m²	12,644.26 f²



Lower Level 117



Mid Level 118



Upper Level 119

Drawings are provided by our consultants. All dimensions, features and amenities are approximate at time of printing. Actual size may vary from stated area. Drawings not to scale E & OE. The developer reserves the right to make revisions to the floor plans and any features, materials and dimensions mentioned without further notice.