



A woman with blonde hair, wearing sunglasses and a patterned dress, is shown in profile. She is holding a large, light-colored hat. The background is a bright blue sky with some green foliage. A white feather graphic is positioned near the text.

# THE RESIDENCES

The **113** private Residences are comprised of varying layouts, configurations and sizes, with a unit to suit every residential need.

# 2 BEDROOM SIMPLEX TYPE 1

Suite Area:  
163.75 m<sup>2</sup>  
1,422.00 sq ft

Balcony Area:  
25.53 m<sup>2</sup>  
274.00 sq ft

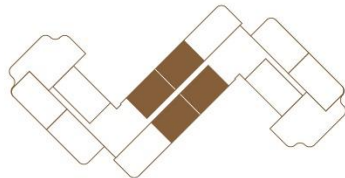
Total Area:  
157.61 m<sup>2</sup>  
1,696.00 sq ft

- |                   |                   |                     |
|-------------------|-------------------|---------------------|
| 1. Master Bedroom | 5. Ensuite        | 9. Powder Room      |
| 2. Master Ensuite | 6. Maid's Bedroom | 10. Foyer           |
| 3. Walk in Robe   | 7. Maid's WC      | 11. Show Kitchen    |
| 4. Second Bedroom | 8. Balcony        | 12. Living & Dining |



## Keyplan

Ground Floor / 1<sup>st</sup> / 2<sup>nd</sup> / 3<sup>rd</sup> / 4<sup>th</sup> / 5<sup>th</sup> / 6<sup>th</sup> / 7<sup>th</sup> / 8<sup>th</sup>



SCALE  
~10 Meters

All dimensions are in imperial and metric, and measured from finish to finish excluding construction tolerances. 2. All materials, dimensions, and drawings are approximate only. 3. Information is subject to change without notice, at developer's absolute discretion. 4. Actual area may vary from the stated area. 5. Drawings not to scale. 6. All images used are for illustrative purposes only and do not represent the actual size, features, specifications, fittings, and furnishings. 7. The developer reserves the right to make revisions / alterations, at its absolute discretion, without any liability whatsoever.

# 2 BEDROOM SIMPLEX TYPE 2

Suite Area:  
173.16 m<sup>2</sup>  
1,864.00 sq ft

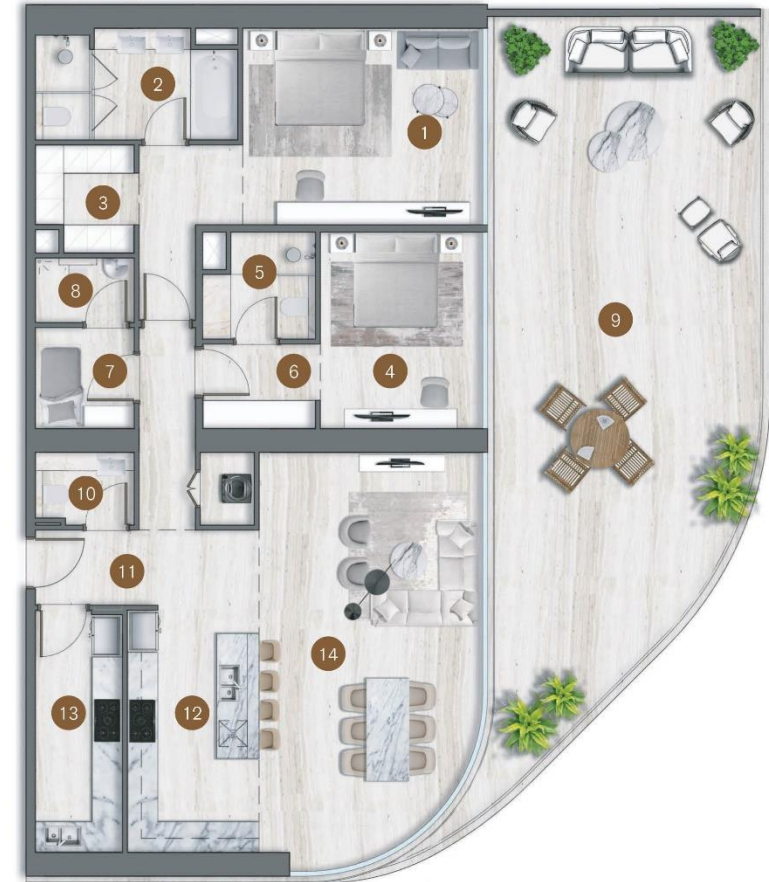
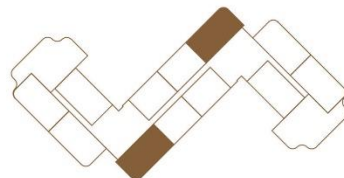
Balcony Area:  
79.86 m<sup>2</sup>  
859.00 sq ft

Total Area:  
253.02 m<sup>2</sup>  
2,723.00 sq ft

- |                   |                   |                     |
|-------------------|-------------------|---------------------|
| 1. Master Bedroom | 6. Walk in Robe   | 11. Foyer           |
| 2. Master Ensuite | 7. Maid's Bedroom | 12. Show Kitchen    |
| 3. Walk in Robe   | 8. Maid's WC      | 13. Wet Kitchen     |
| 4. Second Bedroom | 9. Balcony        | 14. Living & Dining |
| 5. Ensuite        | 10. Powder Room   |                     |

## Keyplan

Ground Floor / 1<sup>st</sup> / 2<sup>nd</sup> / 3<sup>rd</sup> / 4<sup>th</sup> / 5<sup>th</sup> / 6<sup>th</sup> / 7<sup>th</sup> / 8<sup>th</sup>



SCALE  
~10 Meters

All dimensions are in imperial and metric, and measured from finish to finish excluding construction tolerances. 2. All materials, dimensions, and drawings are approximate only. 3. Information is subject to change without notice, at developer's absolute discretion. 4. Actual area may vary from the stated area. 5. Drawings not to scale. 6. All images used are for illustrative purposes only and do not represent the actual size, features, specifications, fittings, and furnishings. 7. The developer reserves the right to make revisions / alterations, at its absolute discretion, without any liability whatsoever.



Generous His & Hers walk-in wardrobes are elegantly designed as a functional yet inspiring showcase for exquisite pieces. Bronze metal insets bring a luxe sensibility to soft, plaster-finish walls, set against a warm-hued solid walnut floor

# 3 BEDROOM SIMPLEX TYPE 1

Suite Area:  
172.82 m<sup>2</sup>  
1,860.00 sq ft

Balcony Area:  
38.28 m<sup>2</sup>  
412.00 sq ft

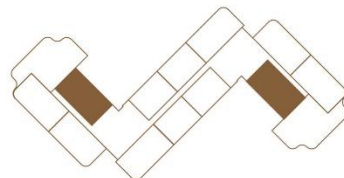
Total Area:  
211.10 m<sup>2</sup>  
2,272.00 sq ft

- |                   |                    |                          |
|-------------------|--------------------|--------------------------|
| 1. Master Bedroom | 7. Third Bedroom   | 13. Powder Room          |
| 2. Ensuite        | 8. Ensuite         | 14. Foyer                |
| 3. Walk in Robe   | 9. Wardrobes       | 15. Show Kitchen         |
| 4. Second Bedroom | 10. Maid's Bedroom | 16. Living & Dining Area |
| 5. Ensuite        | 11. Maid's WC      | 17. Terrace              |
| 6. Wardrobes      | 12. Laundry        |                          |



## Keyplan

Ground Floor / 1<sup>st</sup> / 2<sup>nd</sup> / 3<sup>rd</sup> / 4<sup>th</sup> / 5<sup>th</sup> / 6<sup>th</sup> / 7<sup>th</sup> / 8<sup>th</sup>



SCALE  
~10 Meters

All dimensions are in imperial and metric, and measured from finish to finish excluding construction tolerances. 2. All materials, dimensions, and drawings are approximate only. 3. Information is subject to change without notice, at developer's absolute discretion. 4. Actual area may vary from the stated area. 5. Drawings not to scale. 6. All images used are for illustrative purposes only and do not represent the actual size, features, specifications, fittings, and furnishings. 7. The developer reserves the right to make revisions / alterations, at its absolute discretion, without any liability whatsoever.

3 BEDROOM  
LIVING VIEW



SLS RESIDENCES AT PALM JUMEIRAH

# 3 BEDROOM SIMPLEX TYPE 2

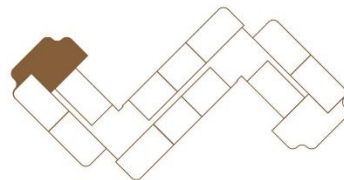
Suite Area:  
254.45 m<sup>2</sup>  
2,739.00 sq ft

Balcony Area:  
122.34 m<sup>2</sup>  
1,317.00 sq ft

Total Area:  
376.79 m<sup>2</sup>  
4,056.00 sq ft

- |                   |                   |                          |
|-------------------|-------------------|--------------------------|
| 1. Master Bedroom | 7. Ensuite        | 13. Show Kitchen         |
| 2. Master Ensuite | 8. Maid's Bedroom | 14. Wet Kitchen          |
| 3. Walk in Robe   | 9. Maid's WC      | 15. Living & Dining Area |
| 4. Second Bedroom | 10. Laundry       | 16. Terrace              |
| 5. Ensuite        | 11. Powder Room   |                          |
| 6. Third Bedroom  | 12. Foyer         |                          |

Keyplan  
Ground Floor / 1<sup>st</sup>



SCALE  
~10 Meters

All dimensions are in imperial and metric, and measured from finish to finish excluding construction tolerances. 2. All materials, dimensions, and drawings are approximate only. 3. Information is subject to change without notice, at developer's absolute discretion. 4. Actual area may vary from the stated area. 5. Drawings not to scale. 6. All images used are for illustrative purposes only and do not represent the actual size, features, specifications, fittings, and furnishings. 7. The developer reserves the right to make revisions / alterations, at its absolute discretion, without any liability whatsoever.



Royal beige marble vanity and flooring set an opulent tone in this primary bath that carries into every facet. The bronze-framed mirror is intricately etched with ornate framing matched only by the visual interest created in ribbed glass doors that fracture light and are lined in a gleaming polished chrome.





The spacious bathtub is crafted in the same royal beige marble that adorns the flooring and vanity and sits under soft lighting, inset in the plaster-finished ceiling.

# 3 BEDROOM DUPEX

Suite Area:  
303.72 m<sup>2</sup>  
3,269.00 sq ft

Balcony Area:  
86.8 m<sup>2</sup>  
934.00 sq ft

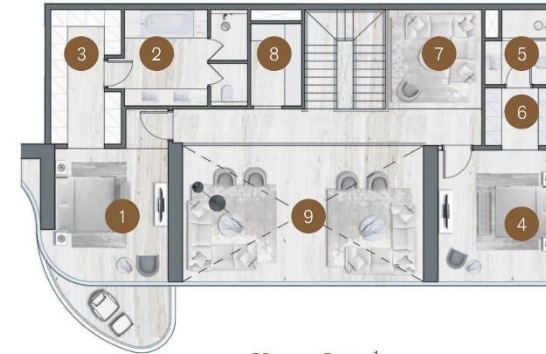
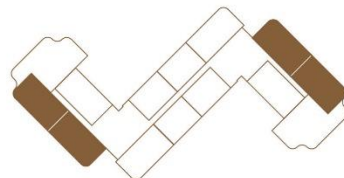
Total Area:  
390.52 m<sup>2</sup>  
4,204.00 sq ft

## Upper Level

1. Master Bedroom	7. Family Room	10. Wet Kitchen	17. Pool Area
2. Ensuite	8. Pantry	11. Show Kitchen & Dining	18. Maid's Bedroom
3. Walk in Robe	9. Void	12. Foyer	19. Maid's WC
4. Second Bedroom		13. Balcony	20. Laundry
5. Ensuite		14. Powder Room	21. Third Bedroom
6. Walk in Robe		15. Wash Room	22. Walk in Robe
		16. Living Area	23. Ensuite

## Keyplan

Ground Floor / 2<sup>nd</sup> / 4<sup>th</sup> / 6<sup>th</sup> / 8<sup>th</sup>



Upper Level



Lower Level

SCALE  
~10 Meters

All dimensions are in imperial and metric, and measured from finish to finish excluding construction tolerances. 2. All materials, dimensions, and drawings are approximate only. 3. Information is subject to change without notice, at developer's absolute discretion. 4. Actual area may vary from the stated area. 5. Drawings not to scale. 6. All images used are for illustrative purposes only and do not represent the actual size, features, specifications, fittings, and furnishings. 7. The developer reserves the right to make revisions / alterations, at its absolute discretion, without any liability whatsoever.



PENTHOUSE TERRACE VIEW

# 3 BEDROOM PENTHOUSE

Suite Area:  
341.95 m<sup>2</sup>  
3,681.00 sq ft

Balcony Area:  
269.49 m<sup>2</sup>  
2,900.00 sq ft

Total Area:  
611.44 m<sup>2</sup>  
6,581.00 sq ft

- |                     |                    |                          |
|---------------------|--------------------|--------------------------|
| 1. Master Bedroom   | 8. Third Bedroom   | 15. Wet Kitchen          |
| 2. Master Bathroom  | 9. Ensuite         | 16. Foyer                |
| 3. Her Walk in Robe | 10. Wardrobes      | 17. Show Kitchen         |
| 4. His Walk in Robe | 11. Laundry        | 18. Living & Dining Area |
| 5. Second Bedroom   | 12. Maid's Bedroom | 19. Dining Terrace       |
| 6. Ensuite          | 13. Maid's WC      | 20. Terrace              |
| 7. Wardrobes        | 14. Powder Room    | 21. Shadow Pond          |

Keyplan  
Roof Floor



SCALE  
~10 Meters

All dimensions are in imperial and metric, and measured from finish to finish excluding construction tolerances. 2. All materials, dimensions, and drawings are approximate only. 3. Information is subject to change without notice, at developer's absolute discretion. 4. Actual area may vary from the stated area. 5. Drawings not to scale. 6. All images used are for illustrative purposes only and do not represent the actual size, features, specifications, fittings, and furnishings. 7. The developer reserves the right to make revisions / alterations, at its absolute discretion, without any liability whatsoever.



SLS RESIDENCES AT PALM JUMEIRAH

## 4 BEDROOM TERRACE VIEW

4 BEDROOM  
ARRIVAL VIEW





## BEDROOM

Warm-hued solid walnut flooring carries throughout the primary bedroom, opposite a bevelled, bronze-framed mirror etched with a pattern that is suspended from the ceiling.



4 BEDROOM  
DINING VIEW



# 4 BEDROOM DUPLIX

Suite Area:  
437.41m<sup>2</sup>  
4,708.00 sq ft

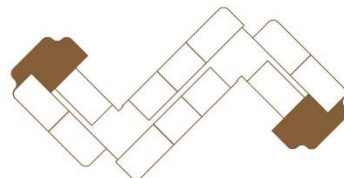
Balcony Area:  
126.61m<sup>2</sup>  
1,363.00 sq ft

Total Area:  
564.02 m<sup>2</sup>  
6,071.00 sq ft

Upper Level		Lower Level	
1. Master Bedroom	8. Third Bedroom	11. Fourth Bedroom	19. Foyer
2. Ensuite	9. Ensuite	12. Ensuite	20. Powder Room
3. Her Walk In Robe	10. Balcony	13. Walk in Robe	21. Wet Kitchen
4. His Walk In Robe		14. Maid's Bedroom	22. Show Kitchen
5. Second Bedroom		15. Maid's WC	23. Dining Area
6. Ensuite		16. Laundry	24. Living Room
7. Wardrobes		17. Pantry	25. Balcony
		18. Utility	26. Pool Area

## Keyplan

Ground Floor / 2<sup>nd</sup> / 4<sup>th</sup> / 6<sup>th</sup> / 8<sup>th</sup>



Upper Level



Lower Level

SCALE  
~10 Meters

All dimensions are in imperial and metric, and measured from finish to finish excluding construction tolerances. 2. All materials, dimensions, and drawings are approximate only. 3. Information is subject to change without notice, at developer's absolute discretion. 4. Actual area may vary from the stated area. 5. Drawings not to scale. 6. All images used are for illustrative purposes only and do not represent the actual size, features, specifications, fittings, and furnishings. 7. The developer reserves the right to make revisions / alterations, at its absolute discretion, without any liability whatsoever.



PENTHOUSE TERRACE VIEW

SLS RESIDENCES AT PALM JUMEIRAH

# 4 BEDROOM PENTHOUSE

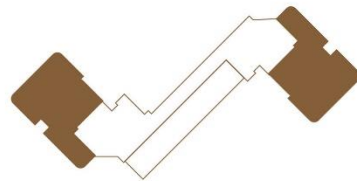
Suite Area:  
344.74 m<sup>2</sup>  
3,711.00 sq ft

Balcony Area:  
952.36 m<sup>2</sup>  
10,251.00 sq ft

Total Area:  
1297.10 m<sup>2</sup>  
13,962.00 sq ft

- |                           |                       |                              |
|---------------------------|-----------------------|------------------------------|
| 1. Master Bedroom         | 9. Ensuite & Wardrobe | 17. Foyer                    |
| 2. Ensuite                | 10. Maid's Bedroom    | 18. Dining & Show Kitchen    |
| 3. His & Her Walk in Robe | 11. Maid's WC         | 19. Living Area              |
| 4. Second Bedroom         | 12. Laundry           | 20. Terrace Seating          |
| 5. Ensuite & Wardrobe     | 13. Wet Kitchen       | 21. Terrace                  |
| 6. Third Bedroom          | 14. Courtyard         | 22. Fire Pit                 |
| 7. Ensuite & Wardrobe     | 15. Family Room       | 23. Terrace Dining Area      |
| 8. Fourth Bedroom         | 16. Powder Room       | 24. Sun Loungers & Pool Area |

Keyplan  
Roof Floor



SCALE  
~10 Meters

All dimensions are in imperial and metric, and measured from finish to finish excluding construction tolerances. 2. All materials, dimensions, and drawings are approximate only. 3. Information is subject to change without notice, at developer's absolute discretion. 4. Actual area may vary from the stated area. 5. Drawings not to scale. 6. All images used are for illustrative purposes only and do not represent the actual size, features, specifications, fittings, and furnishings. 7. The developer reserves the right to make revisions / alterations, at its absolute discretion, without any liability whatsoever.

# SLS RESIDENCES AT PALM JUMEIRAH UNIT MIX

TOTAL		OUTDOOR RATIO
M2	SQF	
32,049	344,967	28%
APARTMENT TYPE	85 Simplex   25 Duplex   3 Penthouses	
2 Bedroom	Simplex	60 Units
3 Bedroom	Simplex	25 Units
3 Bedroom	Duplex	16 Units
4 Bedroom	Duplex	9 Units
3 Bedroom	Penthouse	1 Unit
4 Bedroom	Penthouse	2 Units
TOTAL		113 UNITS



# PAYMENT PLAN

SLS RESIDENCES AT PALM JUMEIRAH

DOWN PAYMENT	20% + 4% DLD	IMMEDIATE
1 <sup>st</sup> Installment	15%	December 2023
2 <sup>nd</sup> Installment	15%	June 2024
3 <sup>rd</sup> Installment	10%	December 2024
4 <sup>th</sup> Installment	40%	On completion Q1 2026



WWW.ROYA.AE | 800 ROYA (7692)

Sales Person's Name

Sales Person's Phone Number

Sales Person's Email ID