



Kempinski
Marina Residences

DUBAI

FLOOR PLAN COLLECTION

Kempinski

HOTELIERS SINCE 1897

1 Bedroom

Type 1

1 Bedroom

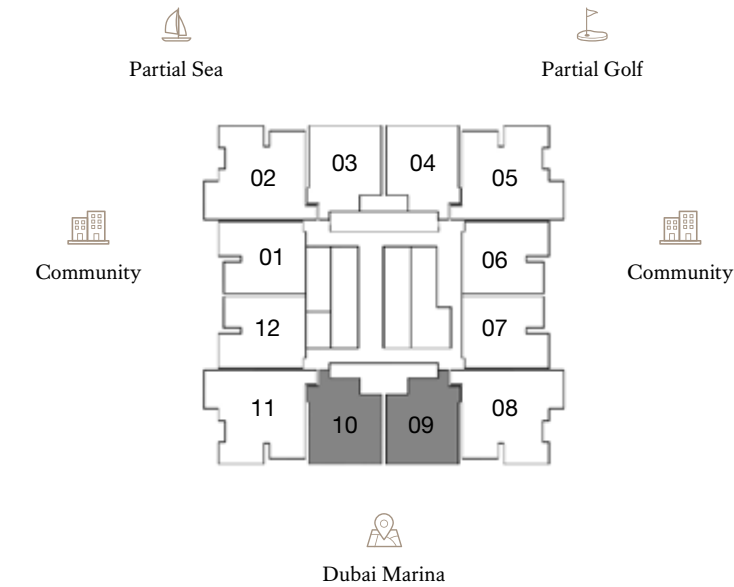
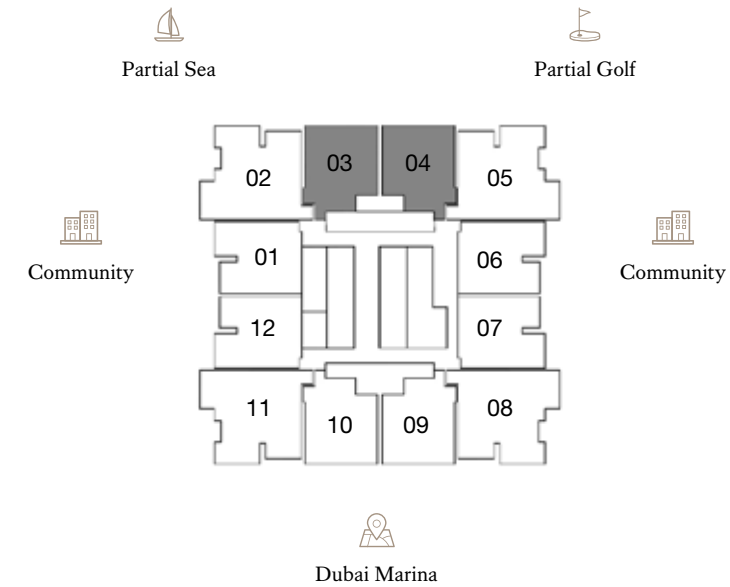
Type 1A

FLOORS: 3 - 8, 11 - 14, 16 - 19, 22 - 25, 28 - 31, 33 - 36, 39 - 42

FLOORS: 3 - 8, 11 - 14, 16 - 19, 22 - 25, 28 - 31, 33 - 36, 39 - 42

- ♦ Internal Area 94.04 sq m / 1,012.24 sq ft
- ♦ Balcony Area 16.67 sq m / 179.43 sq ft
- ♦ Total Area 110.71 sq m / 1,191.68 sq ft

- ♦ Internal Area 89.84 sq m / 967.03 sq ft
- ♦ Balcony Area 15.29 sq m / 164.58 sq ft
- ♦ Total Area 105.13 sq m / 1,131.62 sq ft



1. All dimensions are in imperial and metric, and measured to the structural elements and exclude wall finishes and construction tolerances. 2. All materials, dimensions, and drawings are approximate only. 3. Information is subject to change without notice, at developer's absolute discretion. 4. Actual area may vary from the stated area. 5. Balcony sizes may vary between units. 6. Drawings are not to scale. 7. All images used are for illustrative purposes only and do not represent the actual size, features, specifications, fittings, or furnishings. 8. The developer reserves the right to make revisions/alterations, at its absolute discretion, without any liability whatsoever.

1. All dimensions are in imperial and metric, and measured to the structural elements and exclude wall finishes and construction tolerances. 2. All materials, dimensions, and drawings are approximate only. 3. Information is subject to change without notice, at developer's absolute discretion. 4. Actual area may vary from the stated area. 5. Balcony sizes may vary between units. 6. Drawings are not to scale. 7. All images used are for illustrative purposes only and do not represent the actual size, features, specifications, fittings, or furnishings. 8. The developer reserves the right to make revisions/alterations, at its absolute discretion, without any liability whatsoever.

1 Bedroom

Type 2

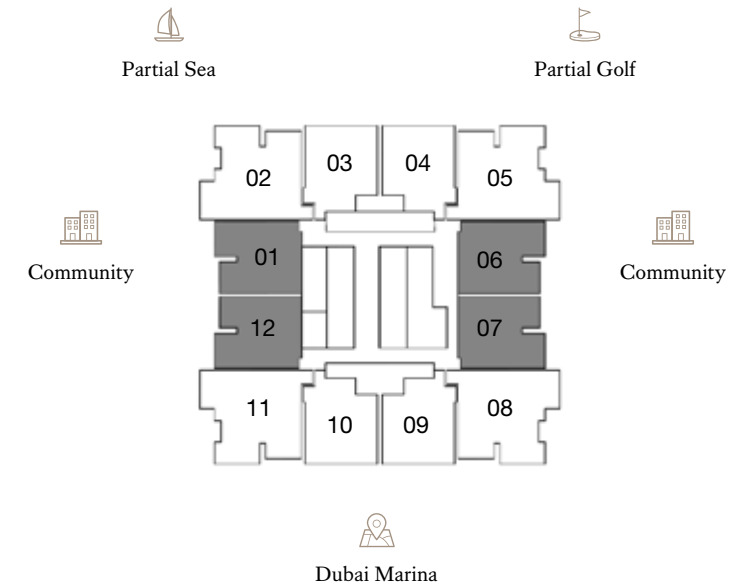
2 Bedroom

Type 1

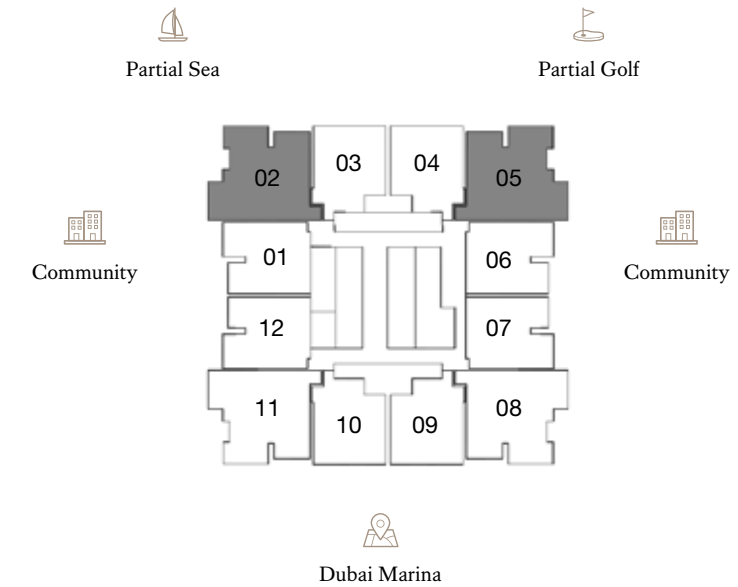
FLOORS: 3 - 8, 11 - 14, 16 - 19, 22 - 25, 28 - 31, 33 - 36, 39 - 42

FLOORS: 3, 4, 6, 7, 11, 12, 14, 16, 17, 19, 22, 23, 25, 28, 29, 31, 33, 34, 36, 39, 40, 42

- ♦ Internal Area 92.04 sq m / 990.71 sq ft
- ♦ Balcony Area 16.94 sq m / 182.34 sq ft
- ♦ Total Area 108.98 sq m / 1,173.06 sq ft



- ♦ Internal Area 130.26 sq m / 1,402.11 sq ft
- ♦ Balcony Area 33.2 sq m / 357.36 sq ft
- ♦ Total Area 163.46 sq m / 1,759.48 sq ft



1. All dimensions are in imperial and metric, and measured to the structural elements and exclude wall finishes and construction tolerances. 2. All materials, dimensions, and drawings are approximate only. 3. Information is subject to change without notice, at developer's absolute discretion. 4. Actual area may vary from the stated area. 5. Balcony sizes may vary between units. 6. Drawings are not to scale. 7. All images used are for illustrative purposes only and do not represent the actual size, features, specifications, fittings, or furnishings. 8. The developer reserves the right to make revisions/alterations, at its absolute discretion, without any liability whatsoever.

1. All dimensions are in imperial and metric, and measured to the structural elements and exclude wall finishes and construction tolerances. 2. All materials, dimensions, and drawings are approximate only. 3. Information is subject to change without notice, at developer's absolute discretion. 4. Actual area may vary from the stated area. 5. Balcony sizes may vary between units. 6. Drawings are not to scale. 7. All images used are for illustrative purposes only and do not represent the actual size, features, specifications, fittings, or furnishings. 8. The developer reserves the right to make revisions/alterations, at its absolute discretion, without any liability whatsoever.

2 Bedroom

Type 1A

2 Bedroom

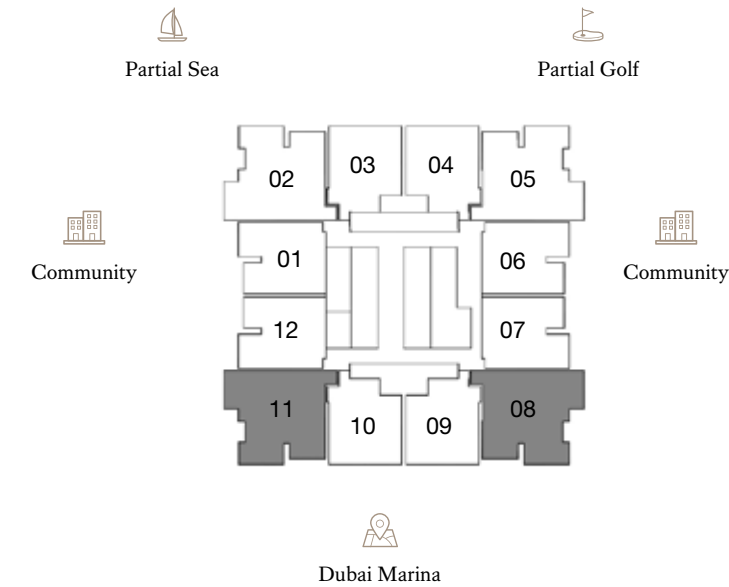
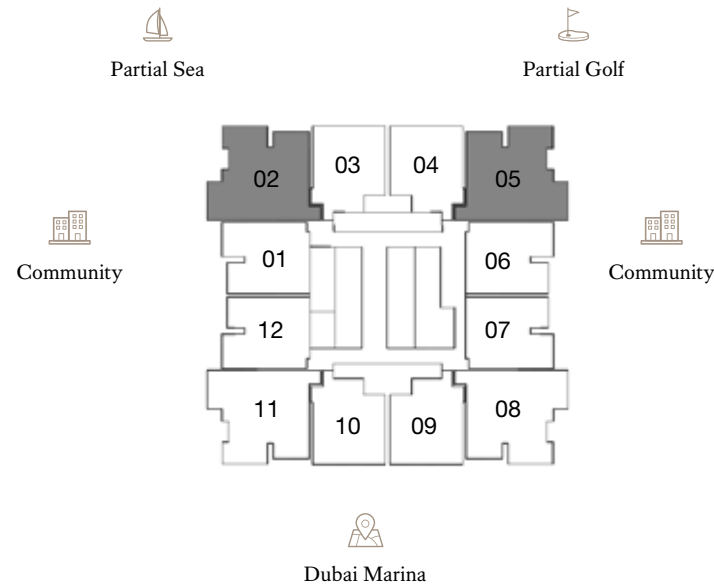
Type 2

FLOORS: 5, 8, 13, 18, 24, 30, 35, 41

FLOORS: 3, 4, 6, 7, 11, 12, 14, 16, 17, 19, 22, 23, 25, 28, 29, 31, 33, 34, 36, 39, 40, 42

- ♦ Internal Area 130.43 sq m / 1,403.94 sq ft
- ♦ Balcony Area 22.8 sq m / 245.42 sq ft
- ♦ Total Area 153.23 sq m / 1,649.37 sq ft

- ♦ Internal Area 131.11 sq m / 1,411.26 sq ft
- ♦ Balcony Area 37.71 sq m / 405.91 sq ft
- ♦ Total Area 168.82 sq m / 1,817.18 sq ft



1. All dimensions are in imperial and metric, and measured to the structural elements and exclude wall finishes and construction tolerances. 2. All materials, dimensions, and drawings are approximate only. 3. Information is subject to change without notice, at developer's absolute discretion. 4. Actual area may vary from the stated area. 5. Balcony sizes may vary between units. 6. Drawings are not to scale. 7. All images used are for illustrative purposes only and do not represent the actual size, features, specifications, fittings, or furnishings. 8. The developer reserves the right to make revisions/alterations, at its absolute discretion, without any liability whatsoever.

1. All dimensions are in imperial and metric, and measured to the structural elements and exclude wall finishes and construction tolerances. 2. All materials, dimensions, and drawings are approximate only. 3. Information is subject to change without notice, at developer's absolute discretion. 4. Actual area may vary from the stated area. 5. Balcony sizes may vary between units. 6. Drawings are not to scale. 7. All images used are for illustrative purposes only and do not represent the actual size, features, specifications, fittings, or furnishings. 8. The developer reserves the right to make revisions/alterations, at its absolute discretion, without any liability whatsoever.

2 Bedroom

Type 2A

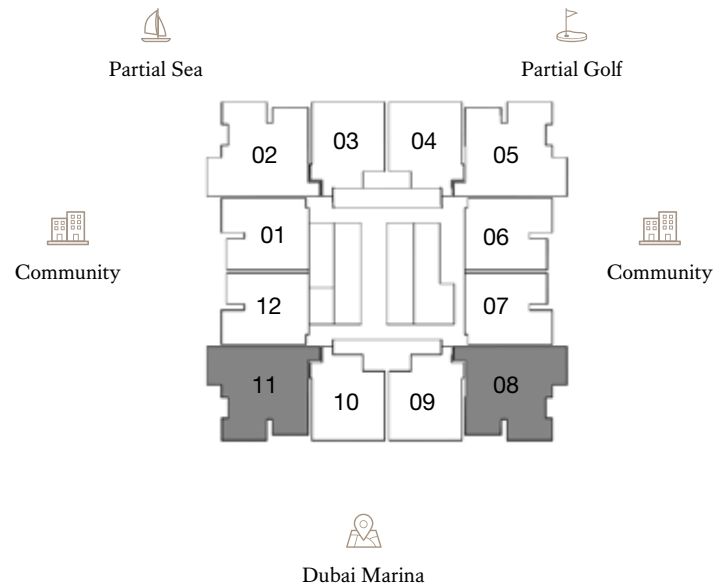


Kempinski
Marina Residences

DUBAI

FLOORS: 5, 8, 13, 18, 24, 30, 35, 41

- ♦ Internal Area 131.11 sq m / 1,411.26 sq ft
- ♦ Balcony Area 25.51 sq m / 274.59 sq ft
- ♦ Total Area 156.62 sq m / 1,685.86 sq ft



DUPLEX APARTMENTS

1. All dimensions are in imperial and metric, and measured to the structural elements and exclude wall finishes and construction tolerances. 2. All materials, dimensions, and drawings are approximate only. 3. Information is subject to change without notice, at developer's absolute discretion. 4. Actual area may vary from the stated area. 5. Balcony sizes may vary between units. 6. Drawings are not to scale. 7. All images used are for illustrative purposes only and do not represent the actual size, features, specifications, fittings, or furnishings. 8. The developer reserves the right to make revisions/alterations, at its absolute discretion, without any liability whatsoever.

2 Bedroom Duplex | Type 1

Lower Floor

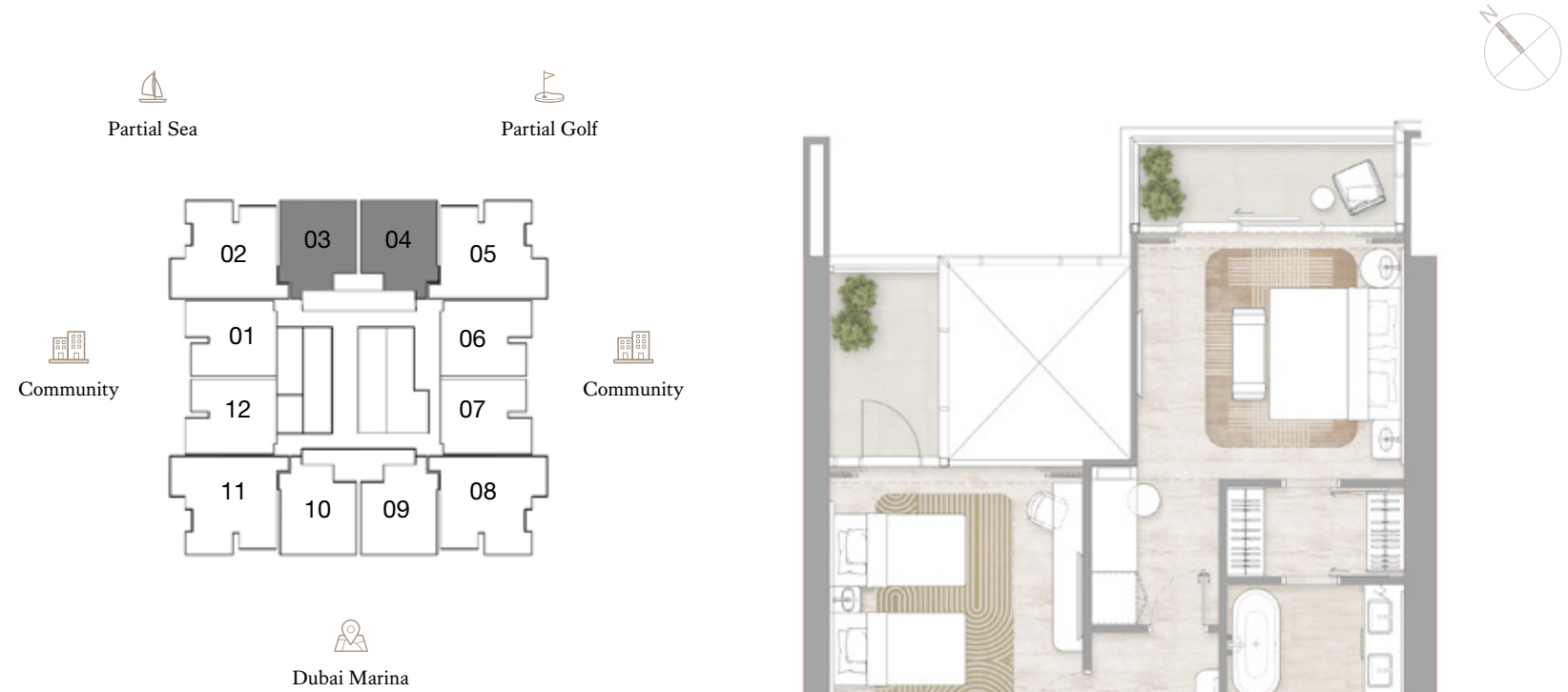
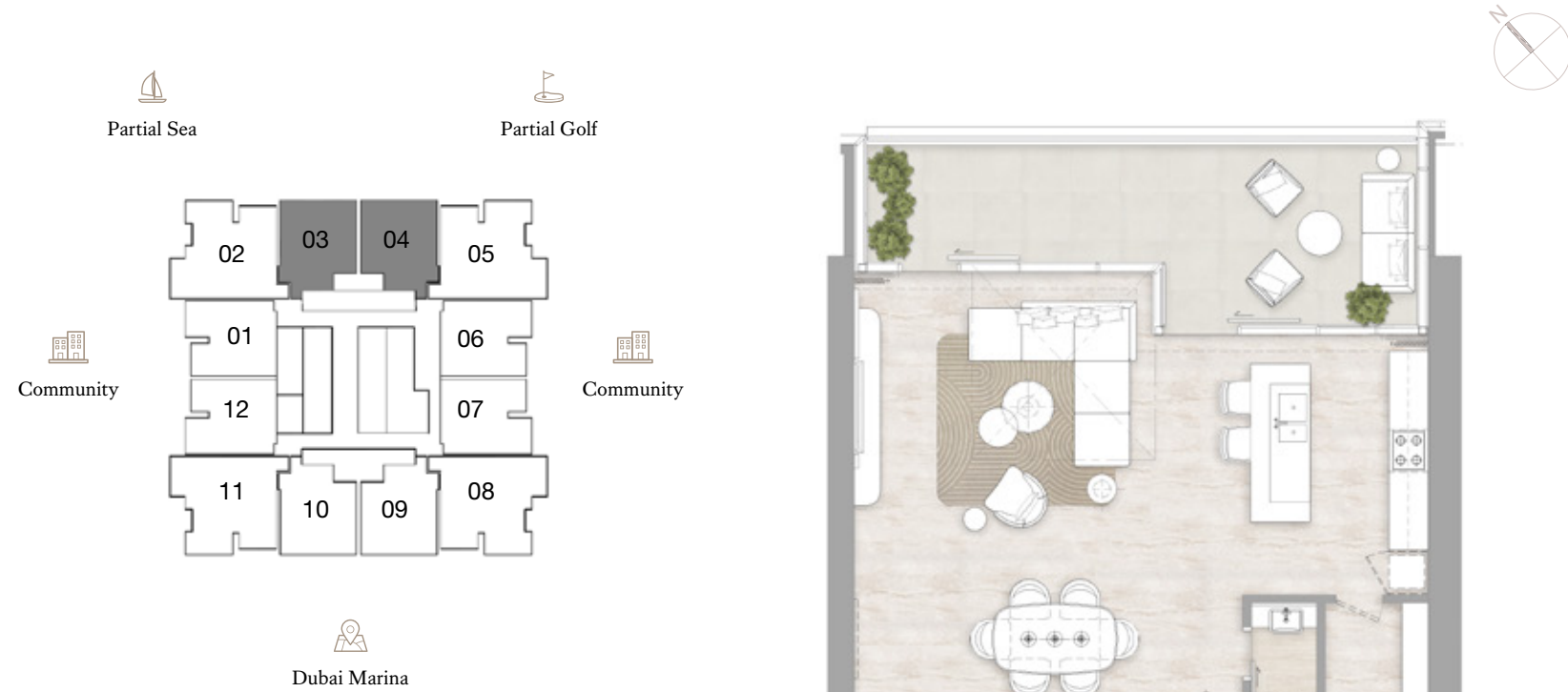
Upper Floor



Kempinski
Marina Residences

DUBAI

FLOORS: 9, 20, 26, 37



- Internal Area 157.44 sq m / 1,694.67 sq ft
- Balcony Area 32.32 sq m / 347.89 sq ft
- Total Area 189.76 sq m / 2,042.58 sq ft

1. All dimensions are in imperial and metric, and measured to the structural elements and exclude wall finishes and construction tolerances. 2. All materials, dimensions, and drawings are approximate only. 3. Information is subject to change without notice, at developer's absolute discretion. 4. Actual area may vary from the stated area. 5. Balcony sizes may vary between units. 6. Drawings are not to scale. 7. All images used are for illustrative purposes only and do not represent the actual size, features, specifications, fittings, or furnishings. 8. The developer reserves the right to make revisions/alterations, at its absolute discretion, without any liability whatsoever.

2 Bedroom Duplex | Type 1A

Lower Floor

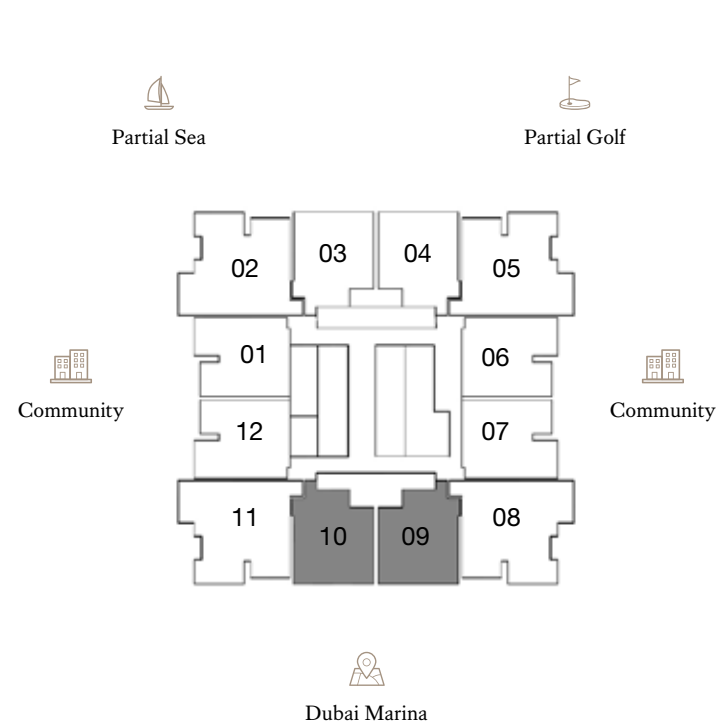
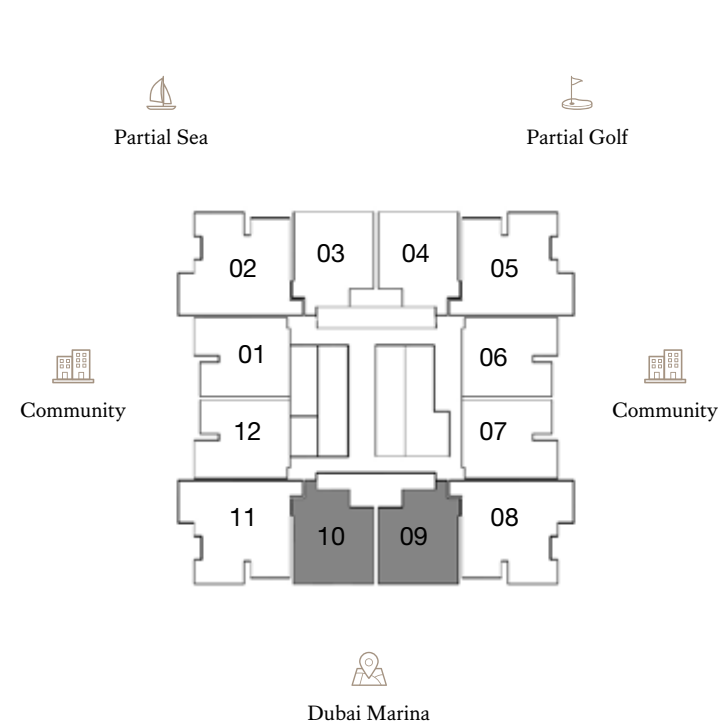
Upper Floor



Kempinski
Marina Residences

DUBAI

FLOORS: 9, 20, 26, 37



- ♦ Internal Area 155.19 sq m / 1,670.45 sq ft
- ♦ Balcony Area 30.74 sq m / 330.88 sq ft
- ♦ Total Area 185.93 sq m / 2,001.35 sq ft

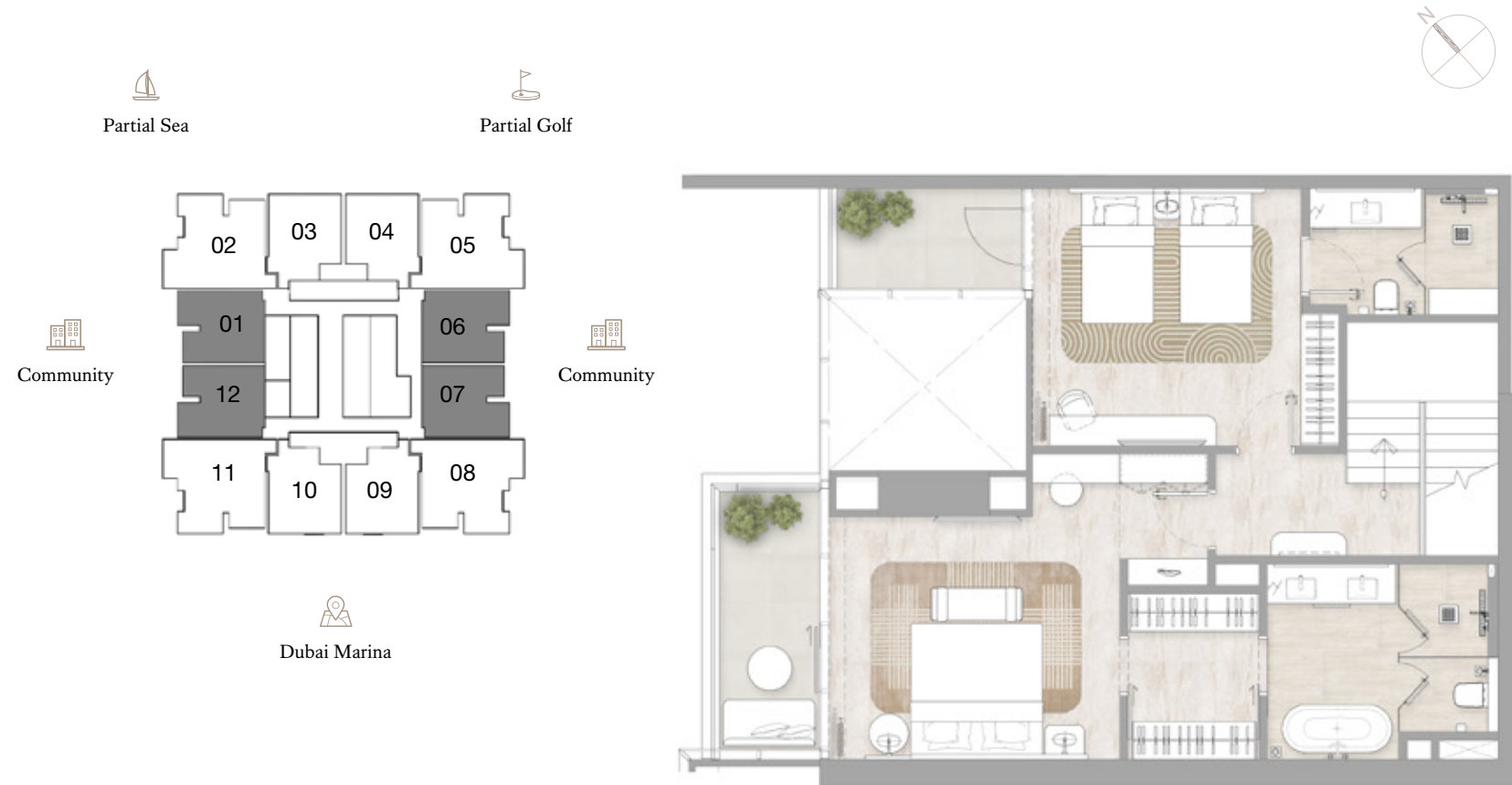
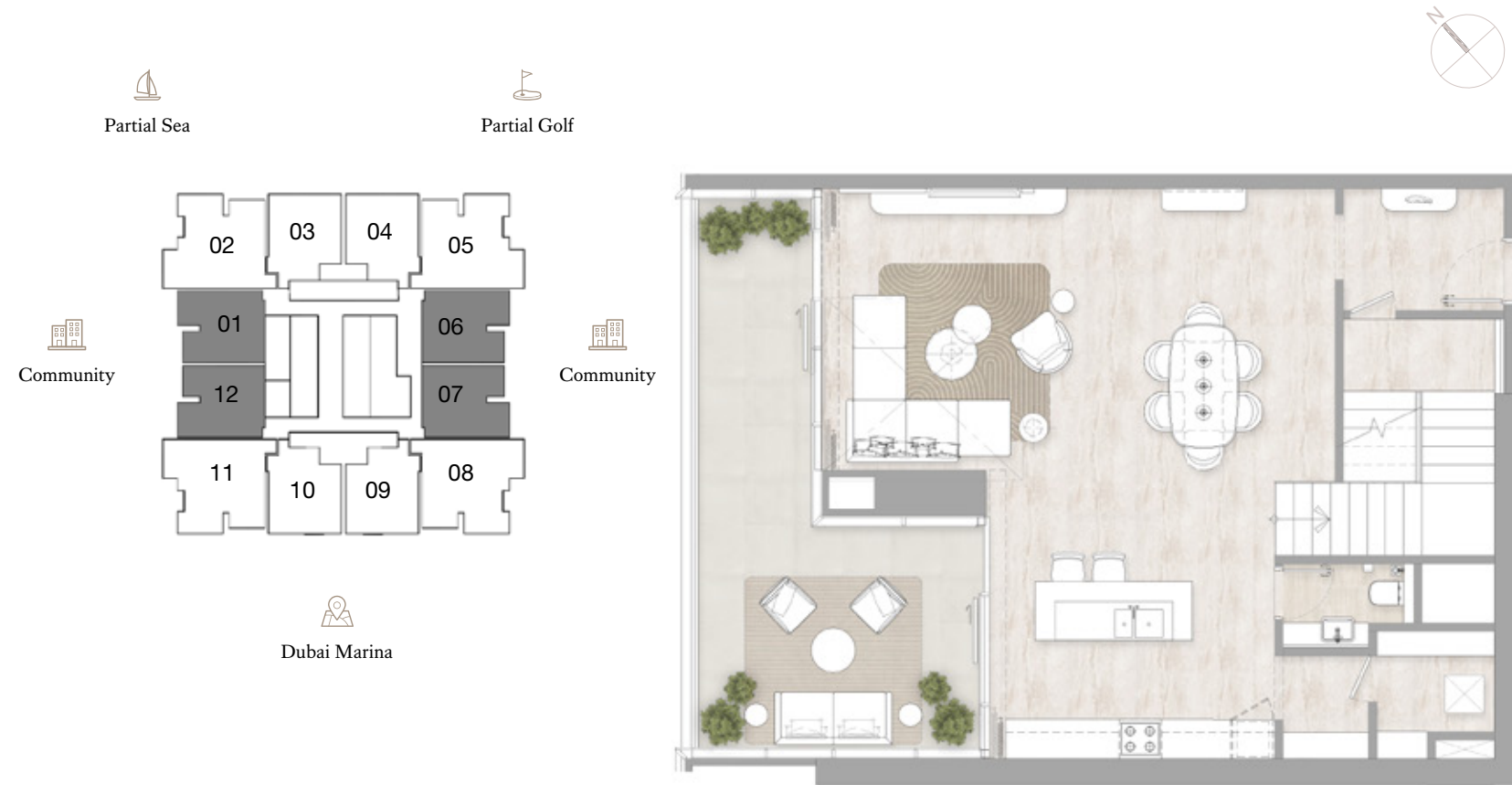
1. All dimensions are in imperial and metric, and measured to the structural elements and exclude wall finishes and construction tolerances. 2. All materials, dimensions, and drawings are approximate only. 3. Information is subject to change without notice, at developer's absolute discretion. 4. Actual area may vary from the stated area. 5. Balcony sizes may vary between units. 6. Drawings are not to scale. 7. All images used are for illustrative purposes only and do not represent the actual size, features, specifications, fittings, or furnishings. 8. The developer reserves the right to make revisions/alterations, at its absolute discretion, without any liability whatsoever.

2 Bedroom Duplex | Type 2

Lower Floor

Upper Floor

FLOORS: 9, 20, 26, 37



- Internal Area 163.61 sq m / 1,761.08 sq ft
- Balcony Area 37.41 sq m / 402.68 sq ft
- Total Area 201.02 sq m / 2,163.78 sq ft

1. All dimensions are in imperial and metric, and measured to the structural elements and exclude wall finishes and construction tolerances. 2. All materials, dimensions, and drawings are approximate only. 3. Information is subject to change without notice, at developer's absolute discretion. 4. Actual area may vary from the stated area. 5. Balcony sizes may vary between units. 6. Drawings are not to scale. 7. All images used are for illustrative purposes only and do not represent the actual size, features, specifications, fittings, or furnishings. 8. The developer reserves the right to make revisions/alterations, at its absolute discretion, without any liability whatsoever.

3 Bedroom Duplex | Type 1

Lower Floor

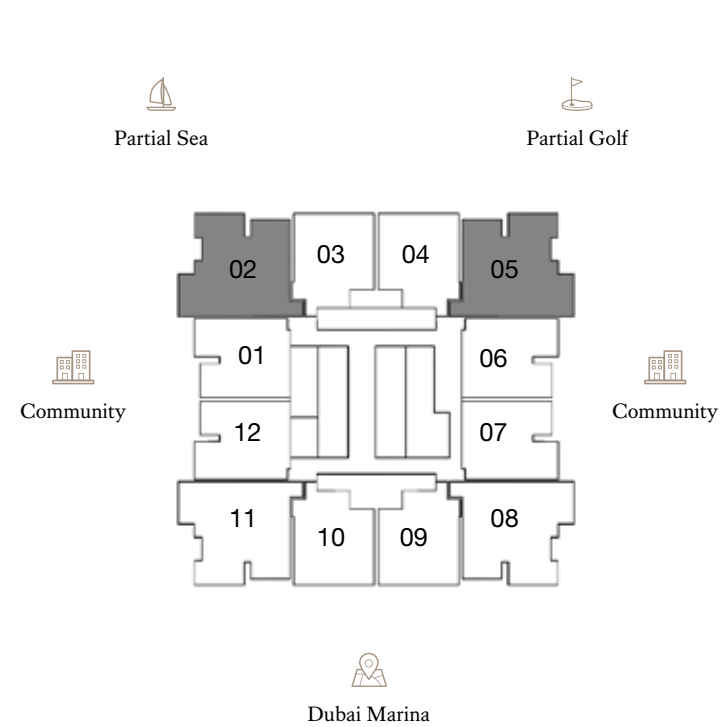
Upper Floor



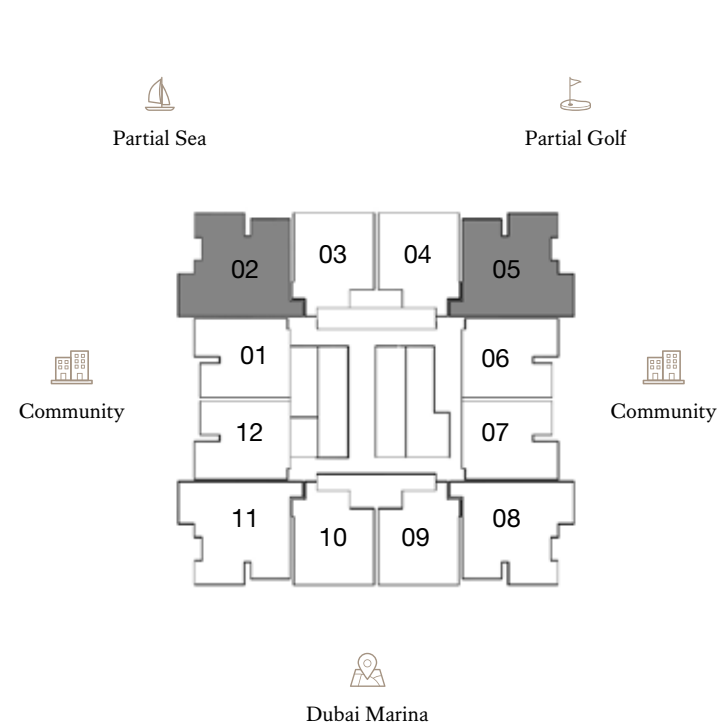
Kempinski
Marina Residences

DUBAI

FLOORS: 9, 20, 26, 37



- Internal Area 234.2 sq m / 2,520.91 sq ft
- Balcony Area 49.05 sq m / 527.97 sq ft
- Total Area 283.25 sq m / 3,048.90 sq ft



1. All dimensions are in imperial and metric, and measured to the structural elements and exclude wall finishes and construction tolerances. 2. All materials, dimensions, and drawings are approximate only. 3. Information is subject to change without notice, at developer's absolute discretion. 4. Actual area may vary from the stated area. 5. Balcony sizes may vary between units. 6. Drawings are not to scale. 7. All images used are for illustrative purposes only and do not represent the actual size, features, specifications, fittings, or furnishings. 8. The developer reserves the right to make revisions/alterations, at its absolute discretion, without any liability whatsoever.

3 Bedroom Duplex | Type 2

Lower Floor

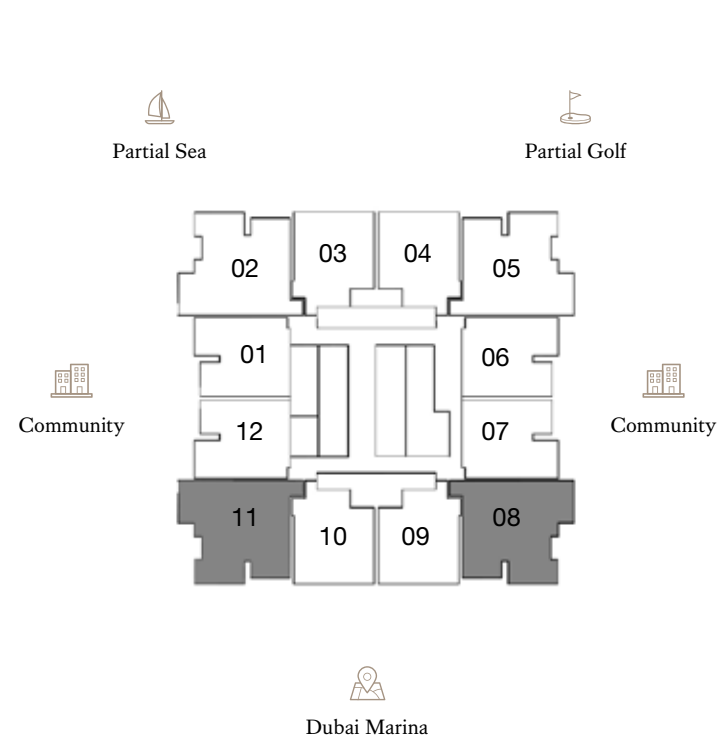
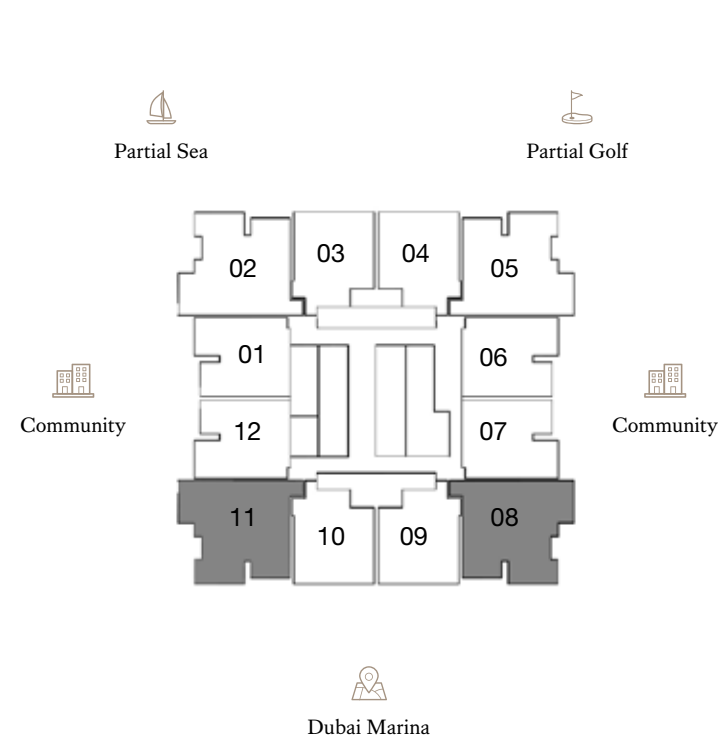
Upper Floor



Kempinski
Marina Residences

DUBAI

FLOORS: 9, 20, 26, 37



- ♦ Internal Area 239.87 sq m / 2,581.94 sq ft
- ♦ Balcony Area 51.44 sq m / 553.7 sq ft
- ♦ Total Area 291.31 sq m / 3,135.66 sq ft

1. All dimensions are in imperial and metric, and measured to the structural elements and exclude wall finishes and construction tolerances. 2. All materials, dimensions, and drawings are approximate only. 3. Information is subject to change without notice, at developer's absolute discretion. 4. Actual area may vary from the stated area. 5. Balcony sizes may vary between units. 6. Drawings are not to scale. 7. All images used are for illustrative purposes only and do not represent the actual size, features, specifications, fittings, or furnishings. 8. The developer reserves the right to make revisions/alterations, at its absolute discretion, without any liability whatsoever.

4 Bedroom Duplex | Type 1

Lower Floor

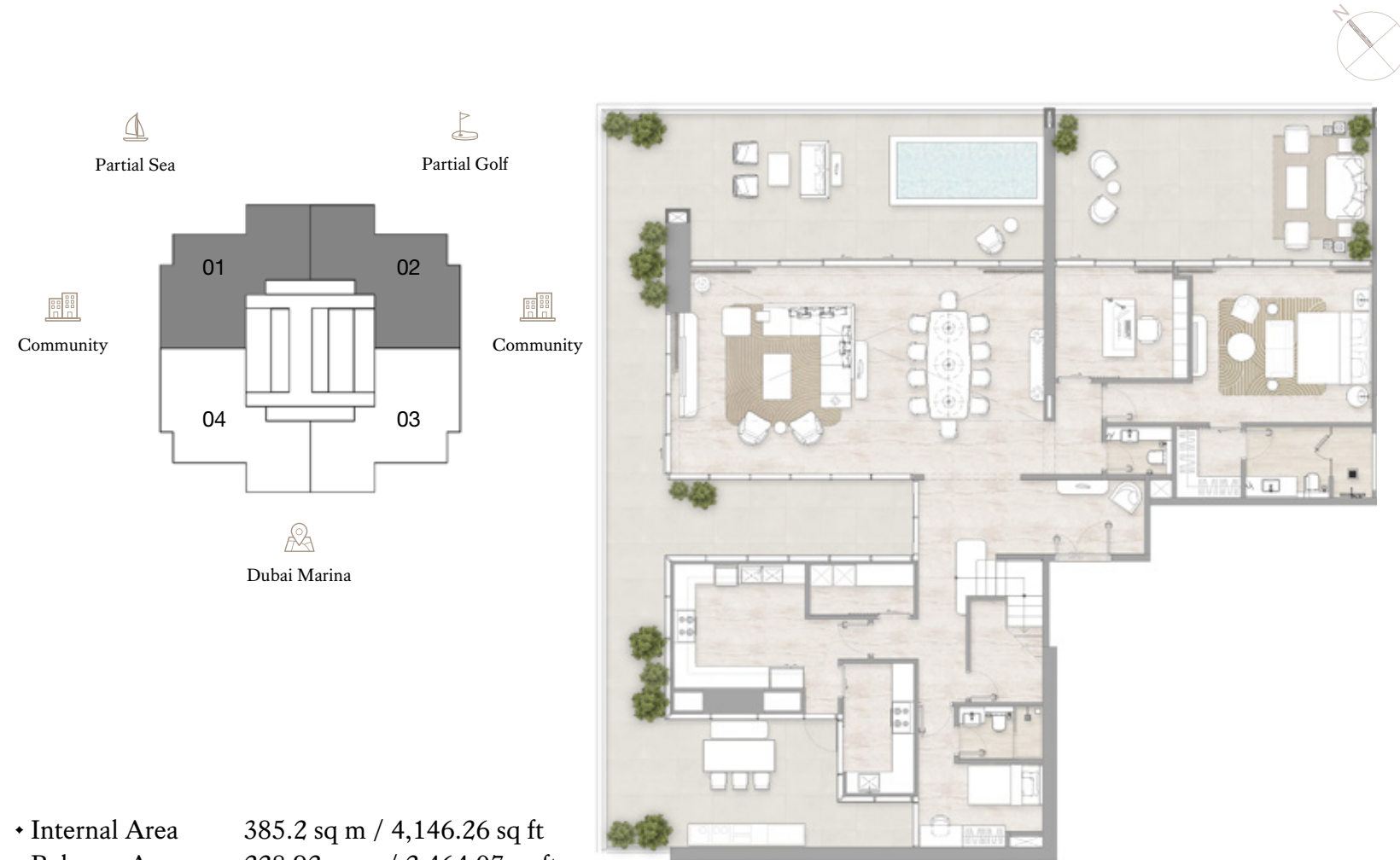
Upper Floor



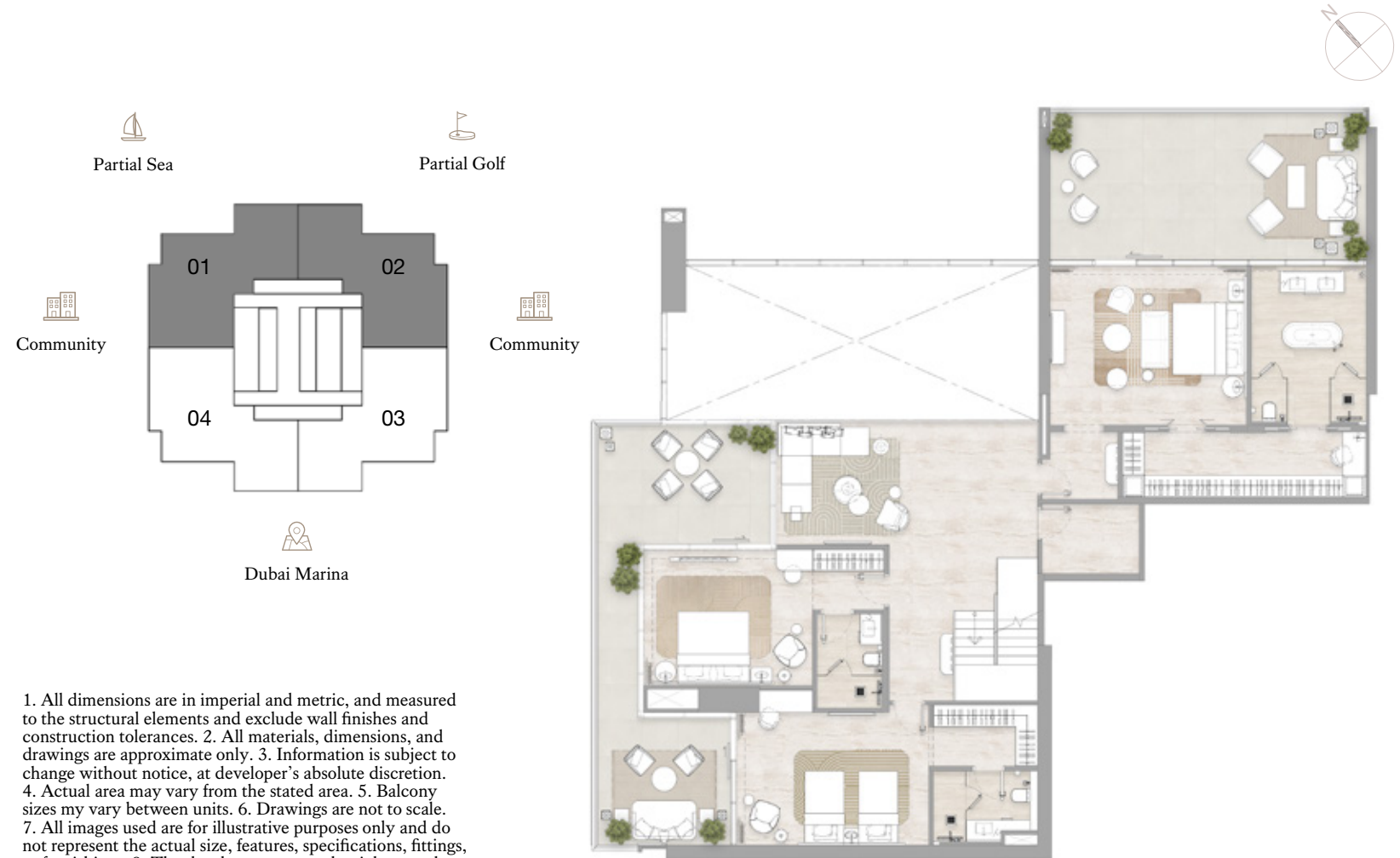
Kempinski
Marina Residences

DUBAI

FLOORS: 43



- ♦ Internal Area 385.2 sq m / 4,146.26 sq ft
- ♦ Balcony Area 228.92 sq m / 2,464.07 sq ft
- ♦ Total Area 614.12 sq m / 6,610.39 sq ft



1. All dimensions are in imperial and metric, and measured to the structural elements and exclude wall finishes and construction tolerances.
2. All materials, dimensions, and drawings are approximate only.
3. Information is subject to change without notice, at developer's absolute discretion.
4. Actual area may vary from the stated area.
5. Balcony sizes may vary between units.
6. Drawings are not to scale.
7. All images used are for illustrative purposes only and do not represent the actual size, features, specifications, fittings, or furnishings.
8. The developer reserves the right to make revisions/alterations, at its absolute discretion, without any liability whatsoever.

4 Bedroom Duplex | Type 1A

Lower Floor

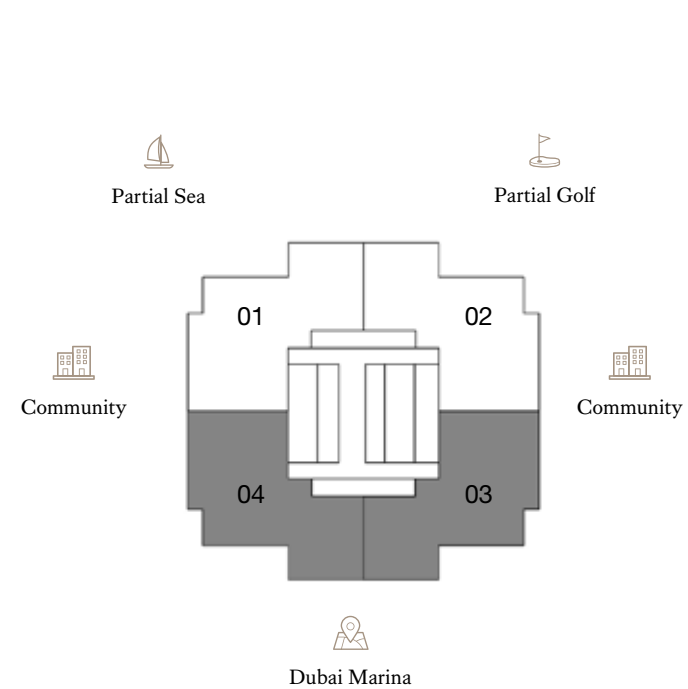
Upper Floor



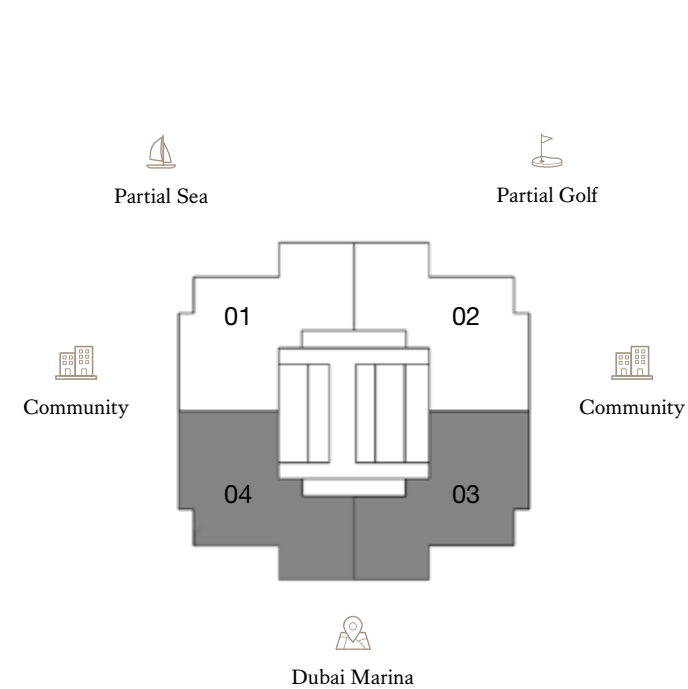
Kempinski
Marina Residences

DUBAI

FLOORS: 43



- ♦ Internal Area 387.08 sq m / 4,166.49 sq ft
- ♦ Balcony Area 218.58 sq m / 2,352.78 sq ft
- ♦ Total Area 605.66 sq m / 6,519.32 sq ft



1. All dimensions are in imperial and metric, and measured to the structural elements and exclude wall finishes and construction tolerances. 2. All materials, dimensions, and drawings are approximate only. 3. Information is subject to change without notice, at developer's absolute discretion. 4. Actual area may vary from the stated area. 5. Balcony sizes may vary between units. 6. Drawings are not to scale. 7. All images used are for illustrative purposes only and do not represent the actual size, features, specifications, fittings, or furnishings. 8. The developer reserves the right to make revisions/alterations, at its absolute discretion, without any liability whatsoever.

5 Bedroom Duplex | Type 1

Lower Floor

Upper Floor



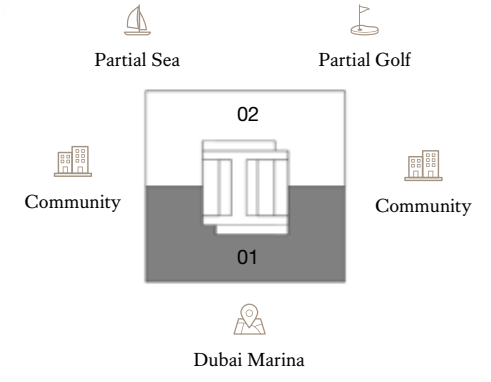
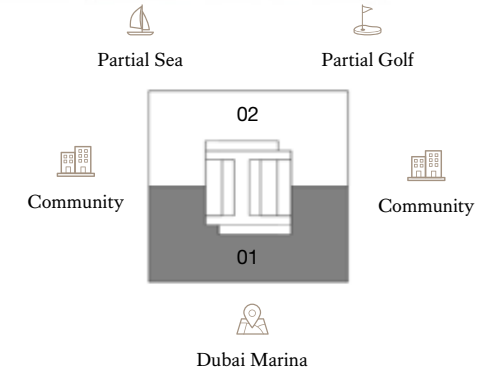
Kempinski
Marina Residences

DUBAI

FLOORS: 45, 47



- Internal Area 693.58 sq m / 7,465.63 sq ft
- Balcony Area 480.2 sq m / 5,168.83 sq ft
- Total Area 1,173.78 sq m / 12,634.57 sq ft



1. All dimensions are in imperial and metric, and measured to the structural elements and exclude wall finishes and construction tolerances. 2. All materials, dimensions, and drawings are approximate only. 3. Information is subject to change without notice, at developer's absolute discretion. 4. Actual area may vary from the stated area. 5. Balcony sizes may vary between units. 6. Drawings are not to scale. 7. All images used are for illustrative purposes only and do not represent the actual size, features, specifications, fittings, or furnishings. 8. The developer reserves the right to make revisions/alterations, at its absolute discretion, without any liability whatsoever.

5 Bedroom Duplex | Type 2

Lower Floor

Upper Floor



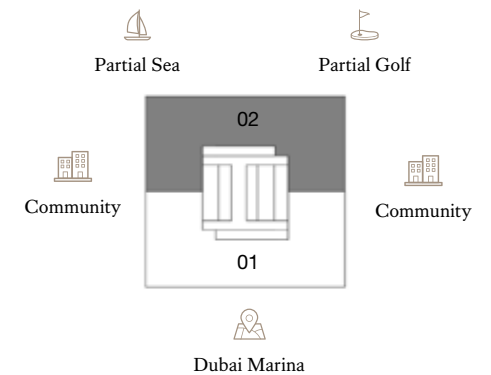
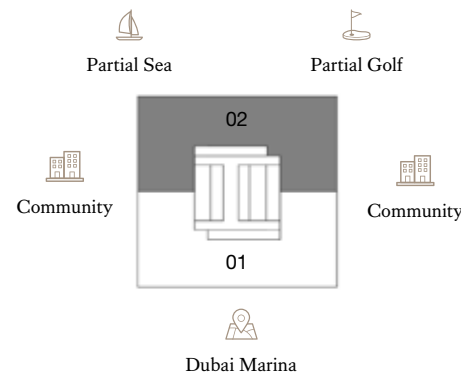
Kempinski
Marina Residences

DUBAI

FLOORS: 45, 47



- ◆ Internal Area 693.58 sq m / 7,465.63 sq ft
- ◆ Balcony Area 480.2 sq m / 5,168.83 sq ft
- ◆ Total Area 1,173.78 sq m / 12,634.57 sq ft



1. All dimensions are in imperial and metric, and measured to the structural elements and exclude wall finishes and construction tolerances. 2. All materials, dimensions, and drawings are approximate only. 3. Information is subject to change without notice, at developer's absolute discretion. 4. Actual area may vary from the stated area. 5. Balcony sizes may vary between units. 6. Drawings are not to scale. 7. All images used are for illustrative purposes only and do not represent the actual size, features, specifications, fittings, or furnishings. 8. The developer reserves the right to make revisions/alterations, at its absolute discretion, without any liability whatsoever.