

The background is a close-up, high-contrast image of a wood grain. The grain lines are dark and wavy, creating a sense of depth and texture. The lighting is warm, with golden-brown and dark brown tones. The overall effect is organic and sophisticated.

# BINGHATTI SKYHALL

DIGITAL BROCHURE

**BINGHATTI**  
**SKYHALL**

On the cusp of tomorrow.  
Where the air meets cadence.  
*A form ascends.*

Rising above the dynamic pulse of Business Bay, Skyhall emerges as a testament to architectural innovation and Binghatti's unwavering pursuit of excellence. More than just a residence, it's an embodiment of curated luxury, seamless technology, and a life lived at the forefront.



# A Legacy of Architectural Artistry

In the heart of Dubai's vibrant real estate landscape, Binghatti stands as a testament to architectural ingenuity and unwavering commitment to excellence.

As a distinguished Emirati property brand, Binghatti has carved a niche for itself by creating iconic landmarks that redefine the skyline.

The brand's diverse portfolio caters to a wide spectrum of discerning clientele, offering projects that range from accessible elegance to ultra-high-end luxury. Binghatti's signature design DNA, meticulously woven into each development, sets it apart on the global stage.

With over **79 projects** in the region valued at more than **AED 45 billion**, Binghatti is a leading privately held developer in the UAE. The company's impressive track record, including the successful delivery of **20,000 units** prior to 2024, underscores its dedication to crafting exceptional living spaces.

Through groundbreaking collaborations with prestigious luxury brands such as **BUGATTI, Mercedes-Benz**, and **Jacob & Co.**, Binghatti continues to push boundaries and set new benchmarks in the world of branded real estate.









## A Haven Above the Horizon

Skyhall offers a sanctuary amidst the city's vibrant energy. Each residence is a haven of tranquility, designed to inspire and rejuvenate.

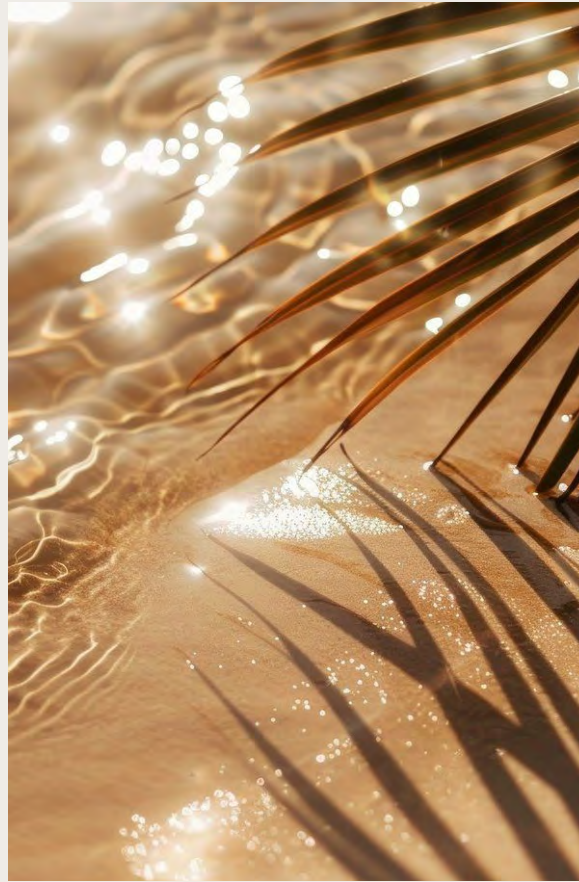


# Sculpted by Light, Defined by Vision

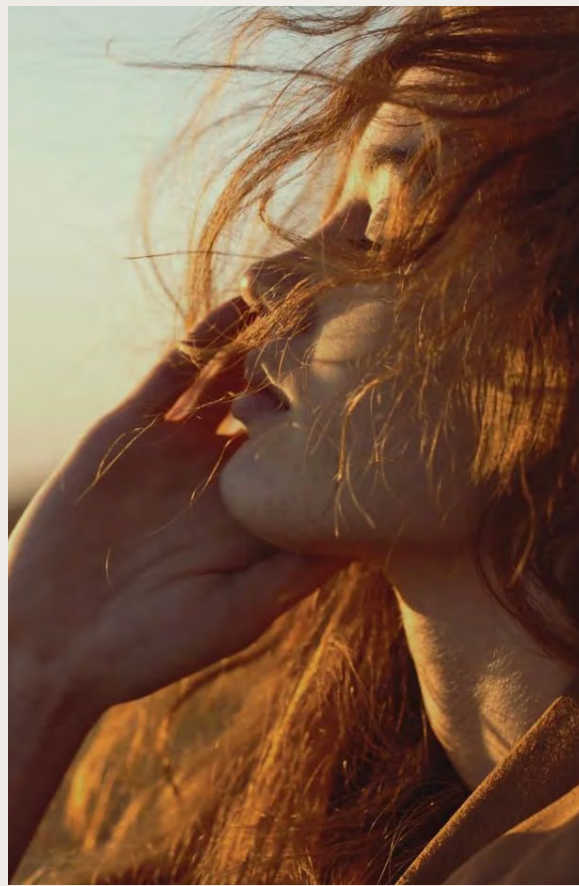
Skyhall's striking silhouette graces the Dubai skyline with its curvilinear form and captivating interplay of light and shadow. A beacon of bold design, it invites you to step inside and discover a world of infinite potential.







# For Those Who Seek More



Skyhall is an invitation to those who dare to live above the horizon, within a vision of their own making. It's a place where ambition finds its address, and the future unfolds with every breathtaking sunrise.







# Project Overview

PROPERTY TYPE

Residential & Retail

PLOT AREA

5,704.66 SQ. M. (61,404.45 SQ.FT)

DESCRIPTION

3B + G + 3P + 29 Residential Floors  
+ 1 Mechanical Floor + Roof

NUMBER OF UNITS

Studio: 489  
1 Bedroom: 228

TOTAL UNITS

Residential: 717  
Shops: 11







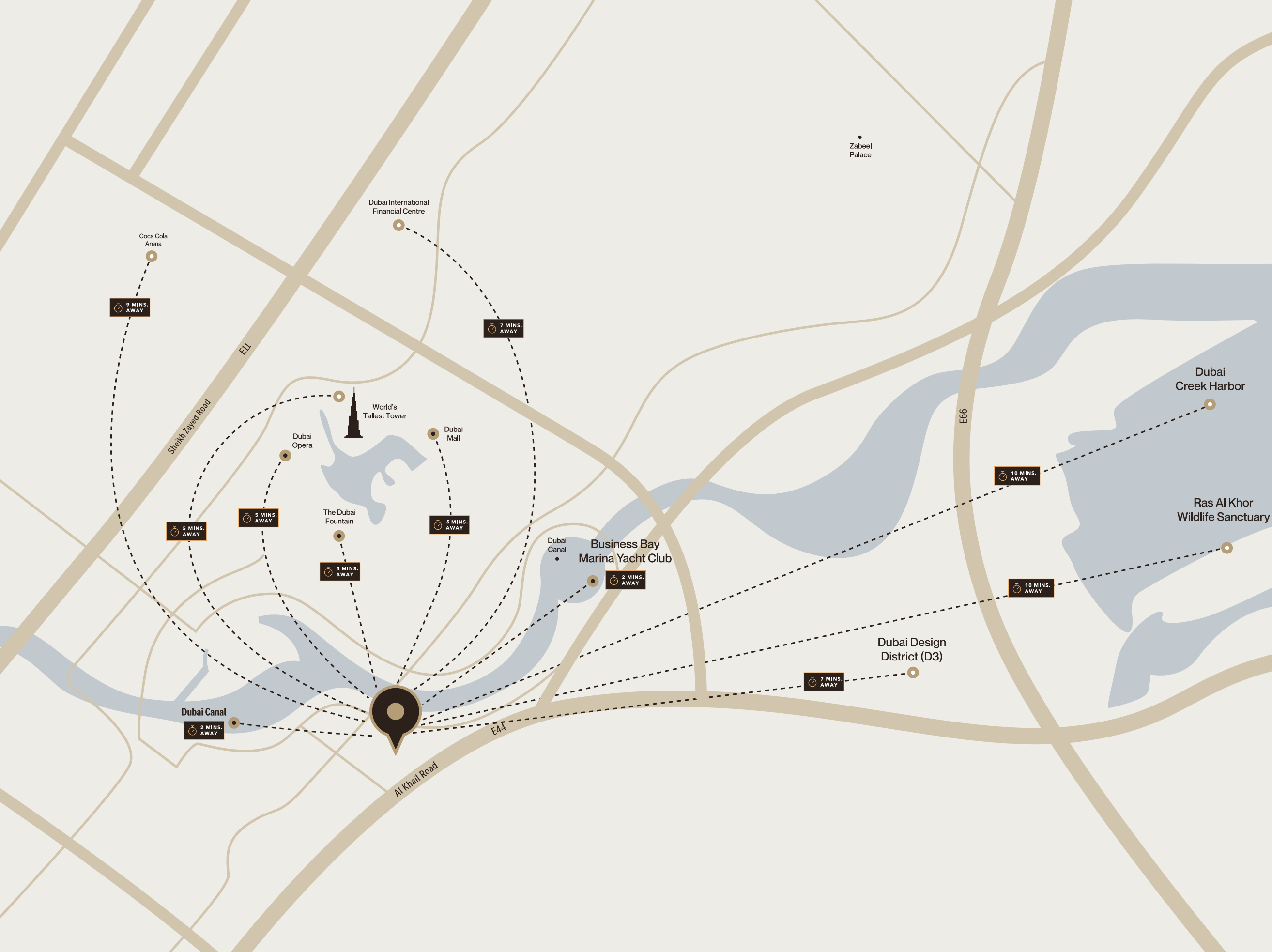
# Where Community Is Lifted

Skyhall fosters a sense of belonging, with spaces designed for connection and shared moments. Gather in the Skyhall's embrace, where laughter mingles with the city lights, and friendships blossom under starlight.

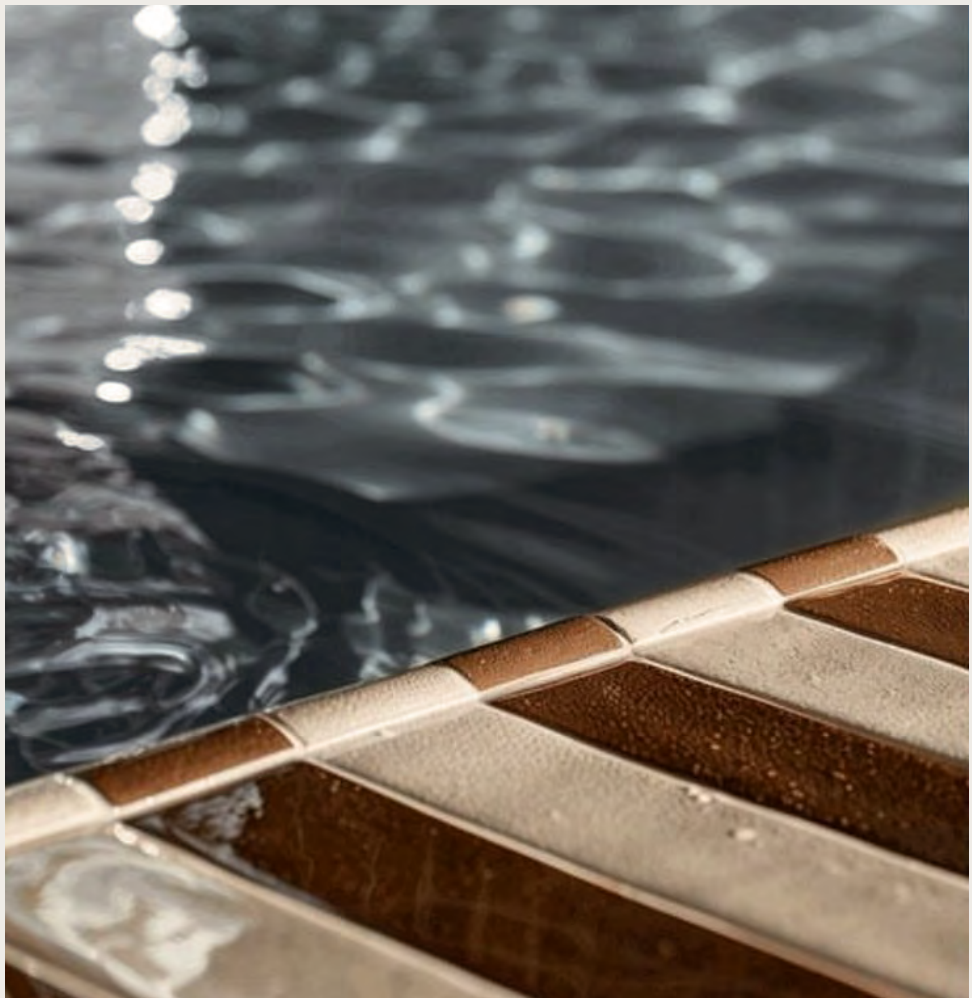


# Connected to the City, Elevated Above It

Skyhall sits absolute in Business Bay, with direct access to the city’s central business districts, cultural attractions, and transportation networkss. Explore the city’s pulse, then retreat to the tranquility of your home above the horizon.







# Amenities Designed to Elevate



ADULT POOL



KID'S POOL



KID'S PLAY AREA



JOGGING PATH



RESORT-STYLE LIVING



SEATING AREA

Skyhall promises a carefully selected array of amenities designed to enhance your every day. Take a refreshing dip in the adult or children's pool, unwind in the landscaped seating areas, or find your rhythm on the jogging track. Skyhall provides the perfect balance of relaxation and reinvention.









# Where Vision Becomes Reality

Step into residences that redefine the living you aspire to. Expansive windows frame breathtaking views of the Dubai skyline, while meticulously curated interiors offer a sanctuary of refined elegance.



# Crafted for a Life at the Forefront

Skyhall is a testament to Binghatti's unwavering commitment to quality and craftsmanship. Each residence is designed to inspire and empower, providing the perfect foundation for a life lived at the forefront.





# A Canvas of Possibilities

Skyhall's interiors are a composite of refined elegance. A carefully curated palette of subtle hues and rich textures creates an atmosphere of understated luxury, allowing your personal style to shine.





# Live Within a Vision

Skyhall is more than just a place to live; it's a place to embody your aspirations. Embrace a life of unparalleled comfort and convenience, where every detail is designed to inspire and empower.





# Where Aspirations Meet Ascendantly

To those who seek more. To those who dare  
above and beyond. To all of them - exist  
within a vision.





